



WHITE GOLD CORP

Corporate Overview – December 2022

TSX-V: WGO | OTCQX: WHGOF | FRA: 29W

Leading Yukon's Modern Gold Rush

IMPORTANT NOTICE



This presentation includes certain statements that constitute “forward-looking statements”, and “forward-looking information” within the meaning of applicable Canadian and United States securities laws (“forward-looking statements” and “forward-looking information” are collectively referred to as “forward-looking statements”, unless otherwise noted). All statements, other than statements of historical fact, may be forward-looking statements. Forward-looking statements are often, but not always, identified by the use of words such as “believe”, “anticipate”, “estimate”, “project”, “intend”, “expect”, “may”, “will”, “plan”, “should”, “would”, “contemplate”, “possible”, “attempts”, “seeks”, “goals”, “targets” and similar expressions. These forward-looking statements appear in a number of places and include statements regarding our intent, or the beliefs or current expectations of our officers and directors. Forward-looking statements may relate to the Company’s future outlook and anticipated events or results and may include statements regarding the White Gold properties mentioned herein, including, but not limited to, exploration and development plans with respect thereto and exercise of the Option, other exploration and development activities, the Company’s future financial position, business strategy, budgets, litigation, projected costs, financial results, taxes, plans and objectives. We have based these forward-looking statements largely on our current expectations and projections about future events and financial trends affecting the financial condition of our business.

Forward-looking statements are based on certain estimates, expectations, analysis and opinions that management believed reasonable at the time they were made or in certain cases, on third party expert opinions. These forward-looking statements were derived utilizing numerous assumptions regarding expected growth, results of operations, performance and business prospects and opportunities, general business and economic conditions, interest rates, the supply and demand for, deliveries of, and the level and volatility of prices of gold and related products, regulatory and governmental approvals, market competition, accuracy of mineral resource and mineral reserve estimates and geological, operational and price assumptions on which such estimates are based, conditions in financial markets, future financial performance of the Company, our ability to attract and retain skilled staff, our ability to procure equipment and supplies and results of exploration and development activities. While the Company considers these assumptions to be reasonable, based on information currently available, they may prove to be incorrect. Accordingly, you are cautioned not to put undue reliance on these forward-looking statements. Forward-looking statements should not be read as a guarantee of future performance or results. To the extent any forward-looking statements constitute future-oriented financial information or financial outlooks, as those terms are defined under applicable Canadian securities laws, such statements are being provided to describe the current anticipated potential of the Company and readers are cautioned that these statements may not be appropriate for any other purpose, including investment decisions.

Such forward-looking statements involve known and unknown risks and uncertainties and other factors that may cause our actual events, results, performance or achievements to be materially different from any future events, results, performance or achievements expressed or implied by such forward-looking statements. Risks and uncertainties that may cause actual events, results, performance or achievements to vary materially include, but are not limited to, risks inherent to mineral exploration and development activities, changes in gold prices, changes in interest and currency exchange rates, inaccurate geological and metallurgical assumptions, unanticipated operational difficulties, government action or delays in the receipt of government approvals, adverse weather conditions, unanticipated events related to health, safety and environmental matters, labor disputes, political risk, social unrest, failure of counterparties to perform their contractual obligations, changes or further deterioration in general economic conditions, and other risks discussed in under the heading “Risks and Uncertainties” in the Company’s most recently filed MD&A.

Forward-looking statements speak only as of the date those statements are made. Except as required by applicable law, we assume no obligation to update or to publicly announce the results of any change to any forward-looking statement contained to reflect actual results, future events or developments, changes in assumptions or changes in other factors affecting the forward-looking statements. If we update any one or more forward-looking statements, no inference should be drawn that we will make additional updates with respect to those or other forward-looking statements. You should not place undue importance or reliance on forward-looking statements. All forward-looking statements contained in this presentation are expressly qualified in their entirety by this cautionary statement.

QUALIFIED PERSON

The scientific and technical information contained in this presentation has been reviewed and approved by Terry Brace, P.Ge. and Vice President of Exploration for the Company, who is a “qualified person” within the meaning of National Instrument 43-101 – Standards of Disclosure of Mineral Projects.

THE OPPORTUNITY



District Scale Land Package

- Largest land holder in the White Gold District
- Tier 1 mining jurisdiction
 - 20M+ oz placer gold and 25M+ oz modern day gold discoveries
 - \$360M Resource Gateway Road infrastructure project underway
 - Ranked top 10 globally by the Fraser Institute

Unique Value Proposition

- Defined high-grade gold deposits:
 - **Golden Saddle-Arc: 1,139,900** oz Au Ind. & **402,100** oz Au Inf. Substantially near surface and open-pittable
 - **VG: 267,600** oz Au Inferred
- New high-grade discoveries

Experienced Management

- Shawn Ryan – prospecting the Klondike & White Gold districts for the last **25 years**
- Terry Brace – **35 years** of mineral exploration and mine development experience
- PowerOne Group – **20+ years** of experience in investing, financing and managing public natural resource companies

Strategic Partners

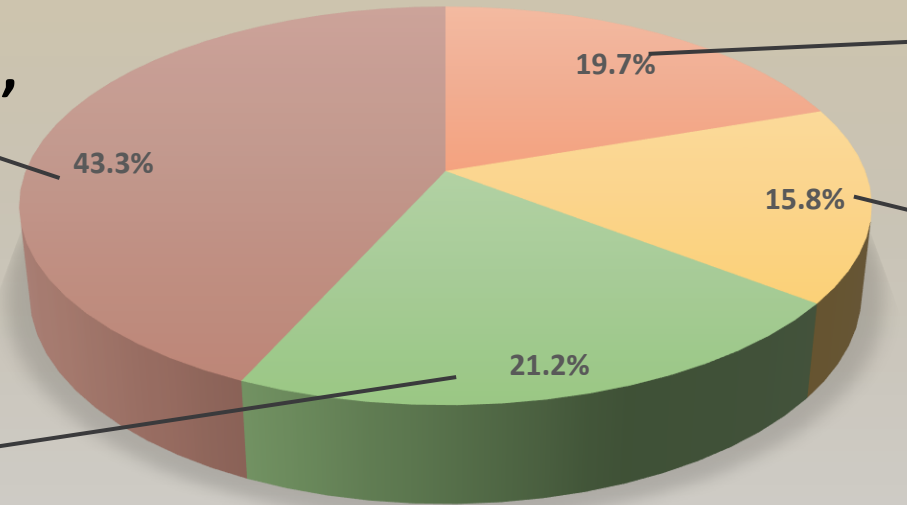
- Financial backing and technical expertise from:
 - Agnico Eagle
 - Kinross
 - Eric Sprott
- Strong capital markets relationships

CAPITAL STRUCTURE



**Eric Sprott,
Strategic Institutions,
Public Float**

**Management
& Insiders**



AGNICO EAGLE



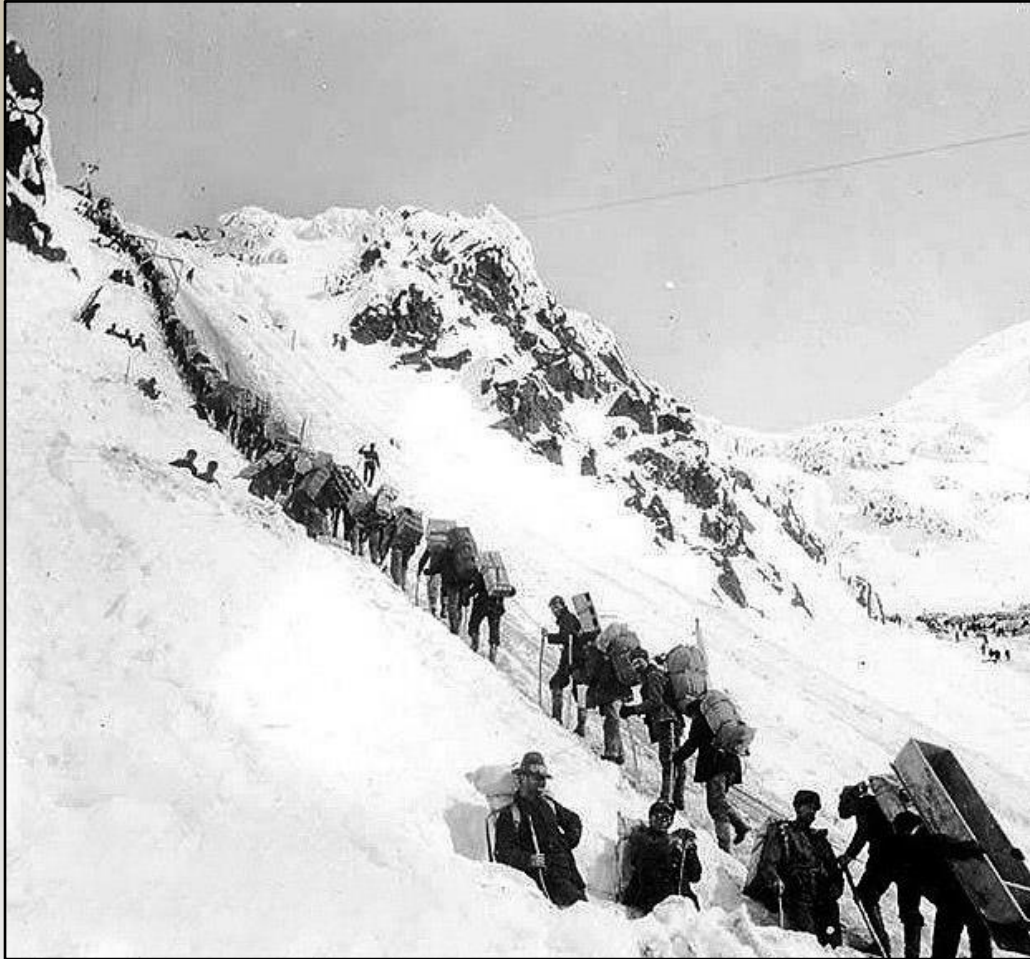
Shares Outstanding: **149.5M** | Warrants: **2.1M** | Options: **5.8M**

Full Analyst Coverage:	
Firm	Recommendation
Eight Capital	Covering: BUY \$3.20
Stifel Financial	Covering: BUY \$2.45
Canaccord Genuity	Watchlist
Clarus Securities	Watchlist
PI Financial	Watchlist

THE KLONDIKE GOLD RUSH (20Moz Placer)



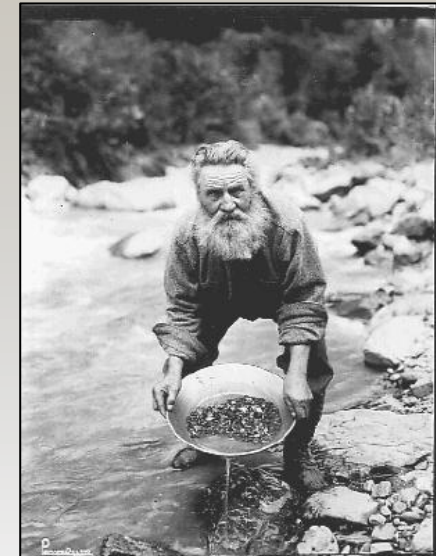
Klondike Gold Rush (1896 – 1899)



Dredge No. 4 (1913 – 1959)



*White Gold Corp. is
exploring for gold and
the source(s) of the
Klondike Gold Rush over
126 years later*



PROPERTY PORTFOLIO



Largest Landholder in the District

Claims: >17,500

Properties: 30

Area: >350,000 Hectares
(>865,000 Acres)

40% Of The District

Extensive Exploration Pipeline

Early-Stage Properties

Bonanza

Nolan

IND

Dime

Hunker

Hayes

20+ Additional Properties

Discovery-Stage Projects

Betty

Ryan's Surprise

Ulli's Ridge

Vertigo

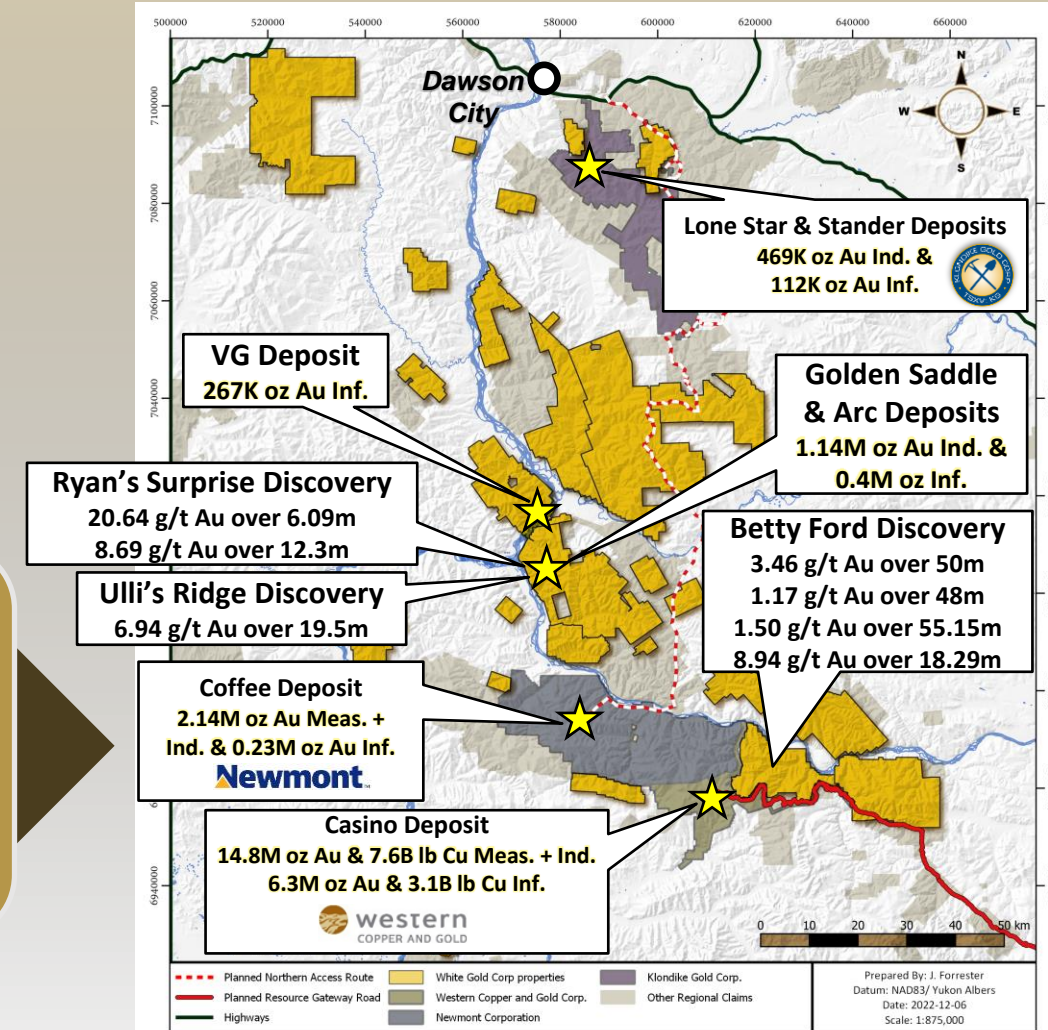
JPR Property
(Multiple)

Advanced-Stage Projects

Golden Saddle

Arc

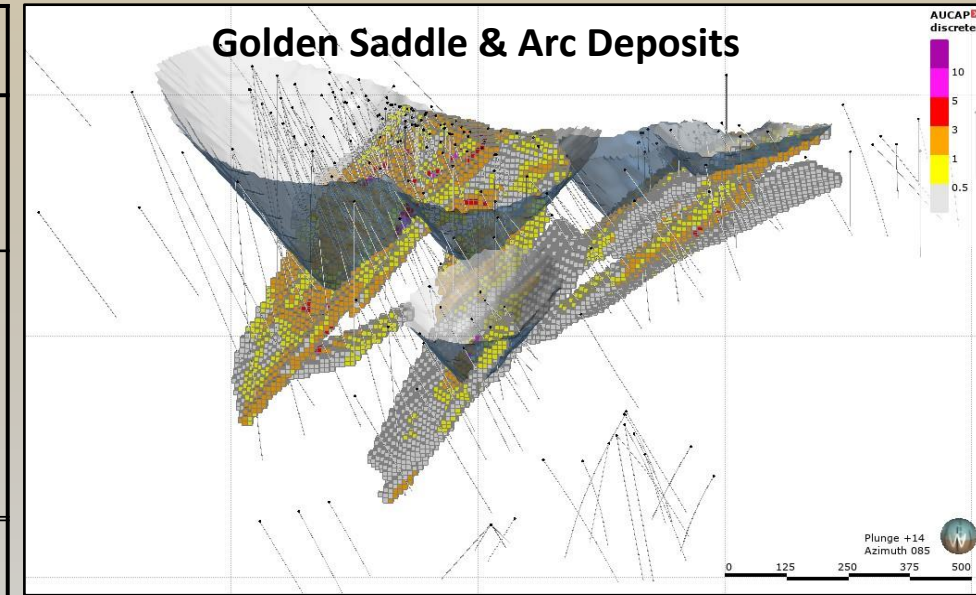
VG Zone



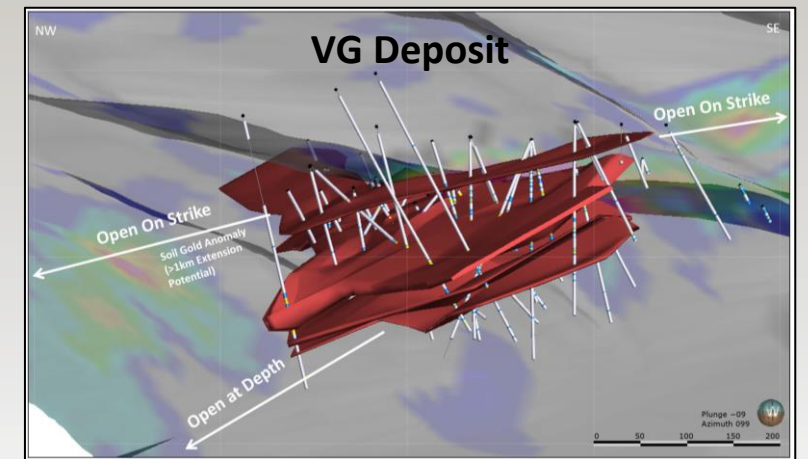
MINERAL RESOURCES



Deposit	Indicated Resource			Inferred Resource		
	Tonnage (000's)	Grade (g/t)	Contained Gold (ounces)	Tonnage (000's)	Grade (g/t)	Contained Gold (ounces)
GS - Near Surface	14,815	2.31	1,098,300	3,454	1.43	159,100
GS - Underground	143	4.53	20,800	326	4.33	45,300
Arc - Near Surface	613	1.06	20,800	5,221	1.18	197,700
TOTAL	15,571	2.28	1,139,900	9,001	1.39	402,100



Deposit	Indicated Resource			Inferred Resource		
	Tonnage (000's)	Grade (g/t)	Contained Gold (ounces)	Tonnage (000's)	Grade (g/t)	Contained Gold (ounces)
VG - Near Surface	--	--	--	5,264	1.62	267,600



2022 EXPLORATION PROGRAM



\$6 Million Program

BETTY PROPERTY

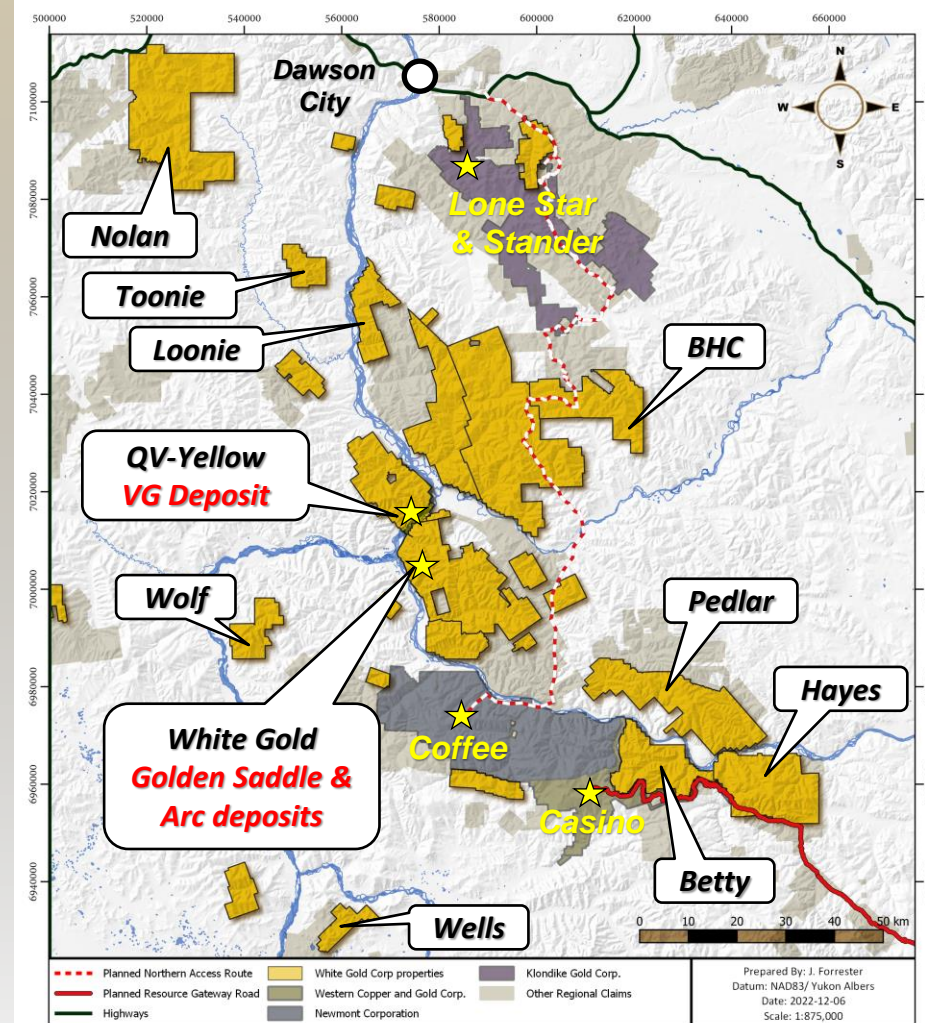
Diamond Drilling – Betty Ford and Mascot Targets (2200m)
RC Drilling – Betty Ford and Other Targets (1650m)

WHITE GOLD PROPERTY

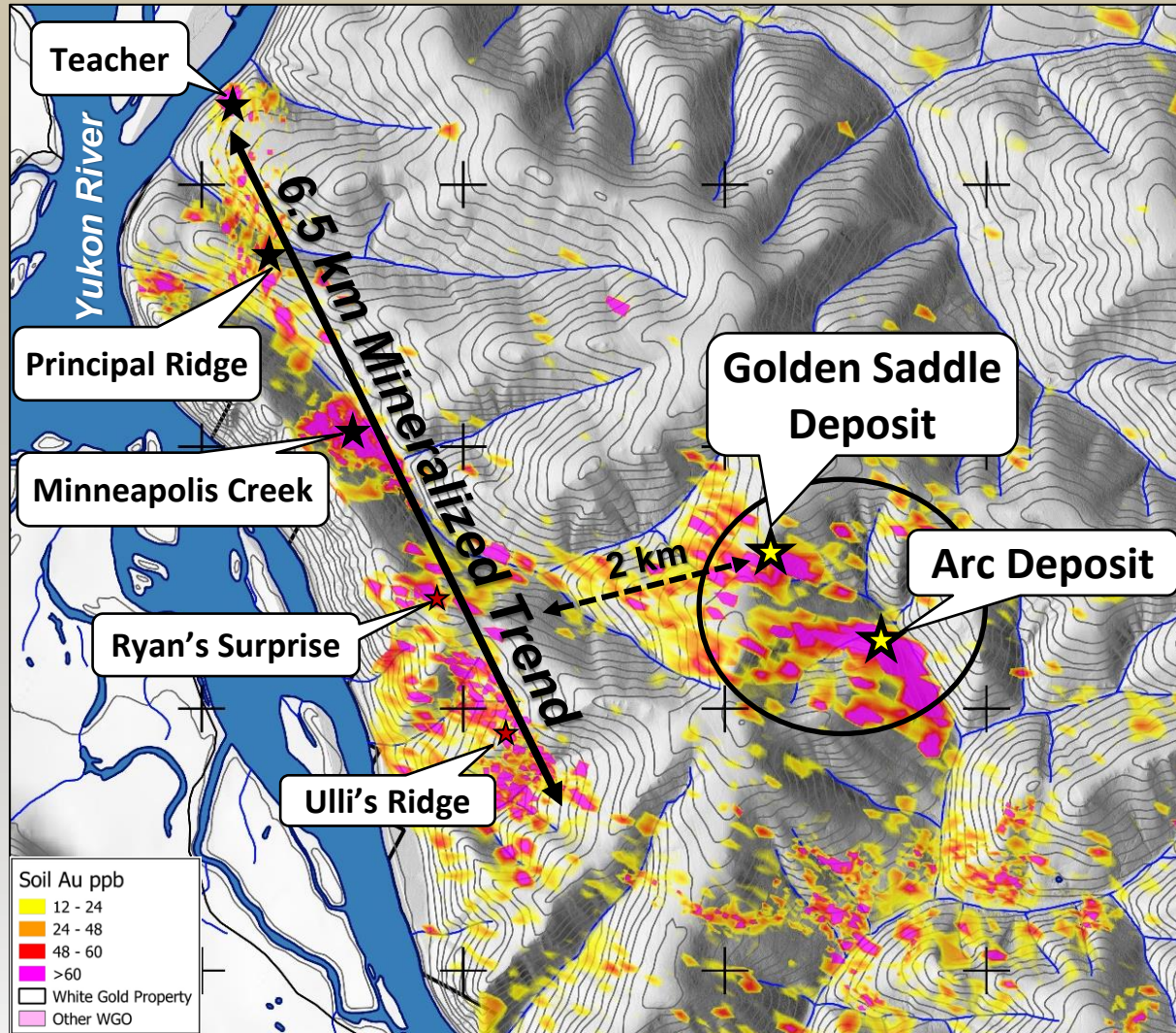
Diamond Drilling – Ryan's Surprise and Ulli's Ridge (2675m)
Focused Prospecting & RAB Drilling – Ryan's Gold-Arsenic
Trend (1000m)

REGIONAL PROGRAM

Geological/structural mapping, Soil Sampling, GT Probe
Sampling, Drone Magnetics, LiDAR Surveys, Structural
Geological Interpretations (M. Sanchez), Fluid Inclusion Study



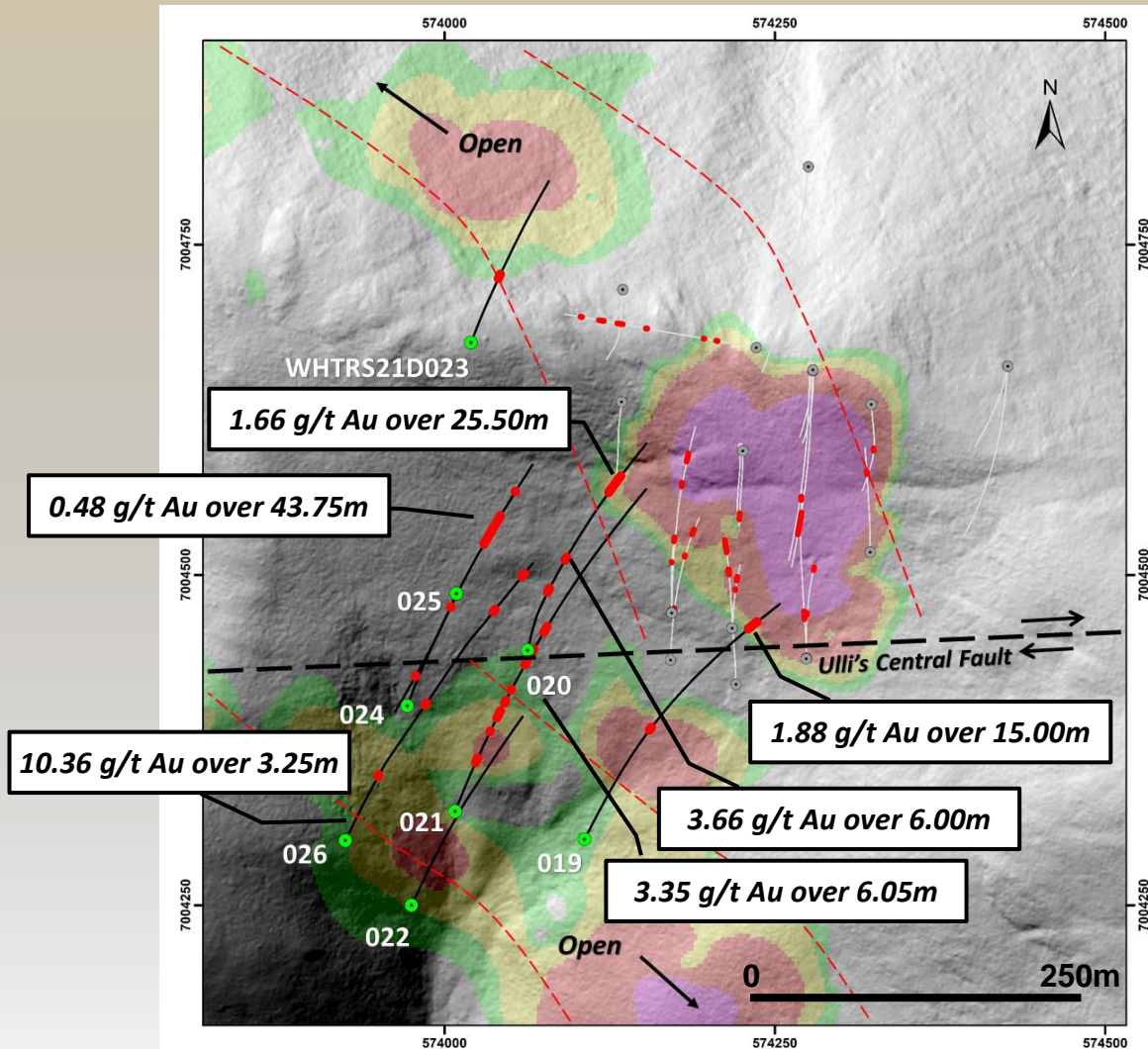
RYAN'S SURPRISE TARGET



Ryan's Surprise Drilling Summary – 2018 to 2021

Hole ID	From (m)	To (m)	Length (m)	Gold (g/t)
WHTRYN18RC0001	83.82	89.91	6.09	20.64
WHTRYN18RC0002	121.92	135.64	13.72	5.02
WHTRS20D013	53.00	56.4	3.47	17.40
WHTRS20D017	156.00	159.76	3.76	10.96
WHTRS20D018	187.70	200.00	12.30	8.69
WHTRS21D020	224.50	250.00	25.50	1.66
WHTRS21D026	186.75	190.00	3.25	10.36

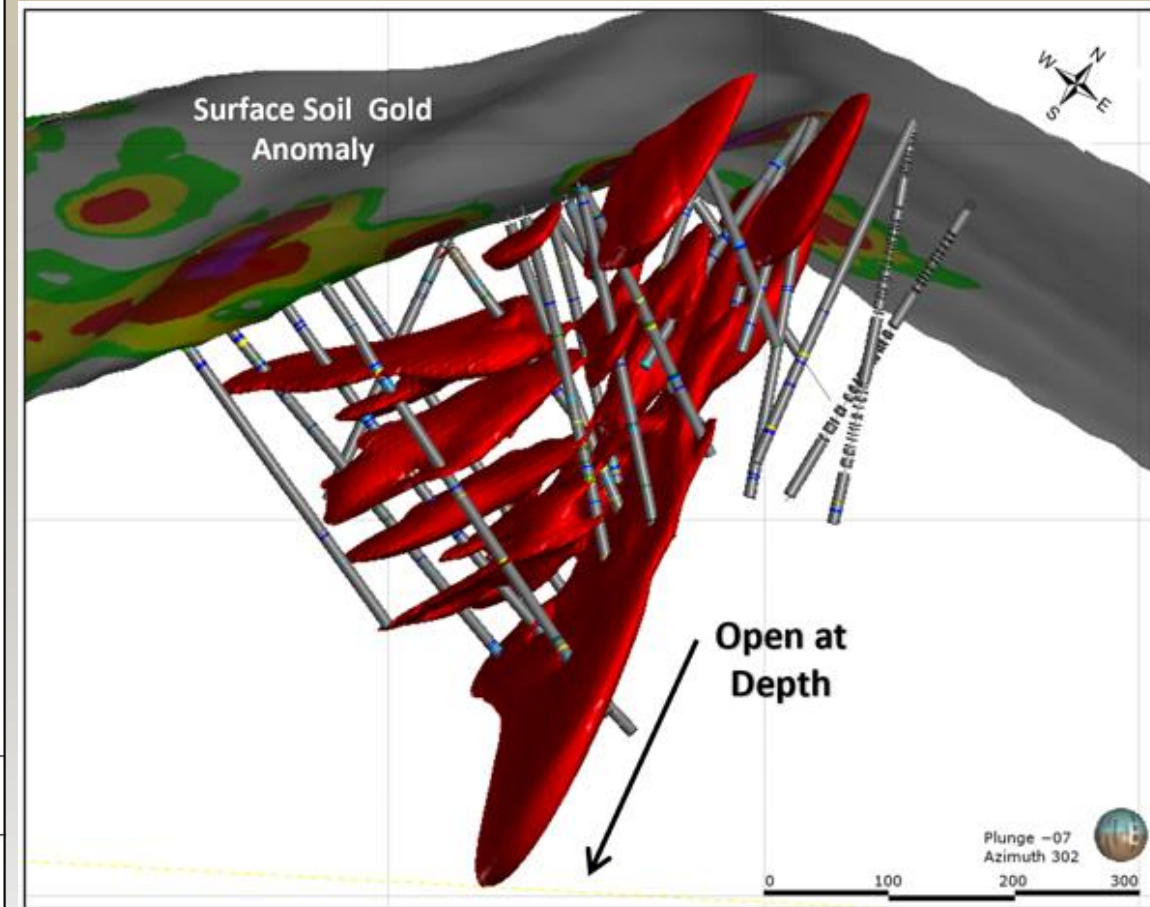
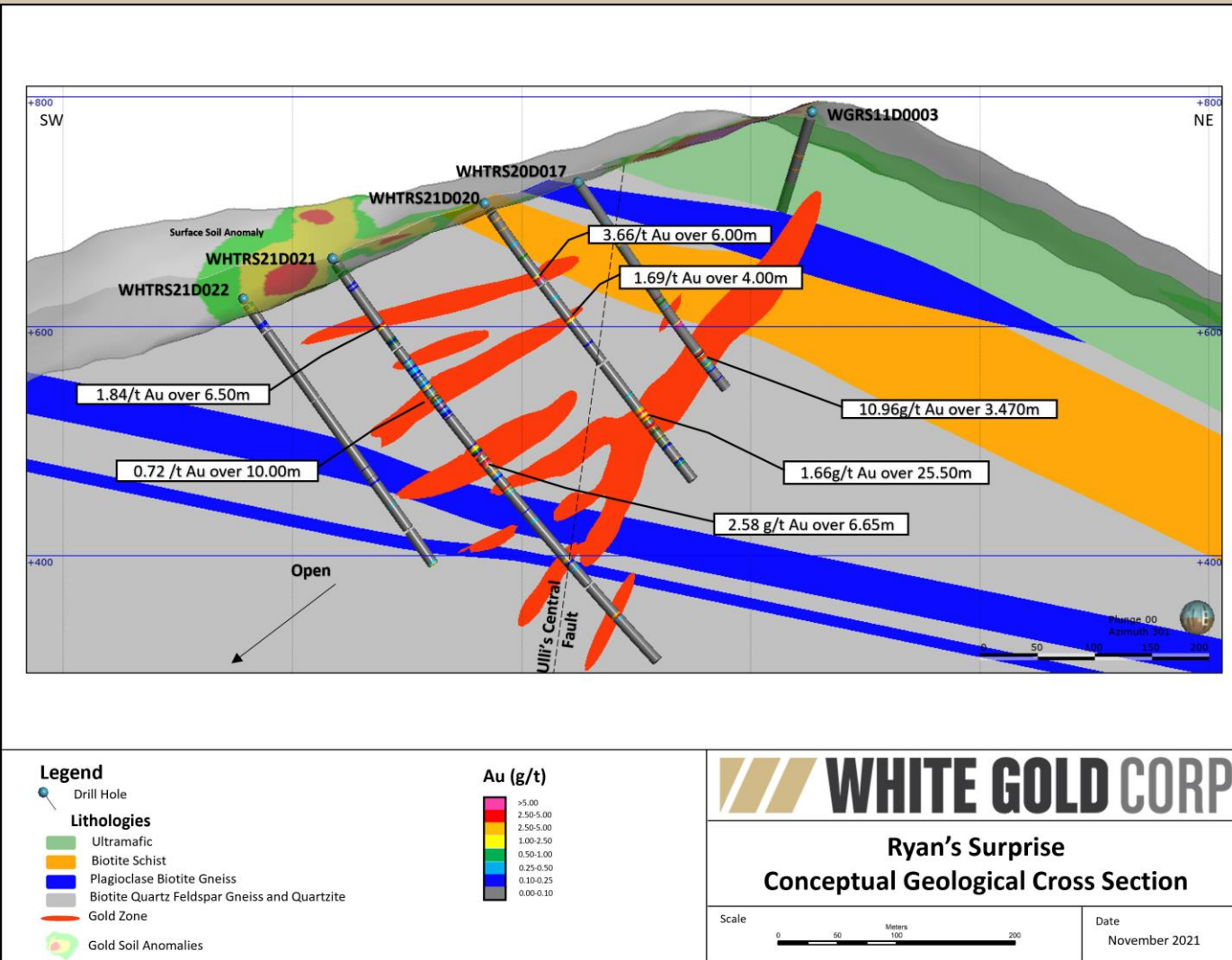
RYAN'S SURPRISE TARGET – 2021 DRILLING



2021 Drilling Program (8 DDH 2,561m)

Hole ID	From (m)	To (m)	Length (m)	Gold (g/t)
WHTRS21D019	370.00	385.00	15.00	1.88
WHTRS21D020	78.00	84.00	6.00	3.66
	224.50	250.00	25.50	1.66
WHTRS21D021	68.50	75.00	6.50	1.84
	220.95	227.00	6.05	3.35
	250.22	258.00	7.78	1.38
	397.15	403.00	5.85	2.14
WHTRS21D023	91.35	98.00	6.65	2.58
WHTRS21D024	238.60	282.35	43.75	0.48
WHTRS21D026	186.75	190.00	3.25	10.36
	325.10	328.50	3.40	2.07
	379.00	384.05	5.05	2.09

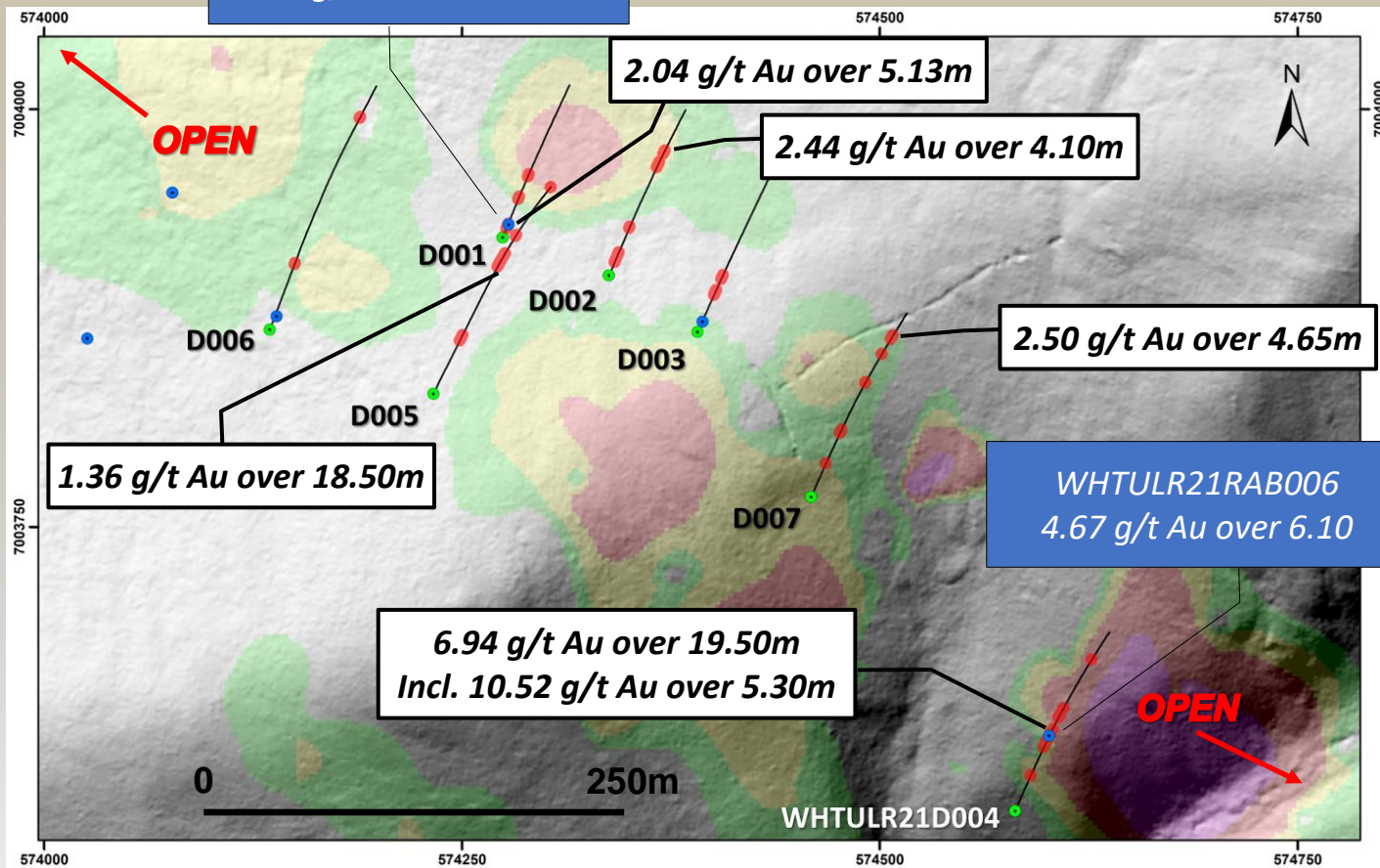
RYAN'S SURPRISE STRUCTURE



ULLI'S RIDGE TARGET – 2021 Drilling



WHTULR21RAB005
1.35 g/t Au over 21.33m

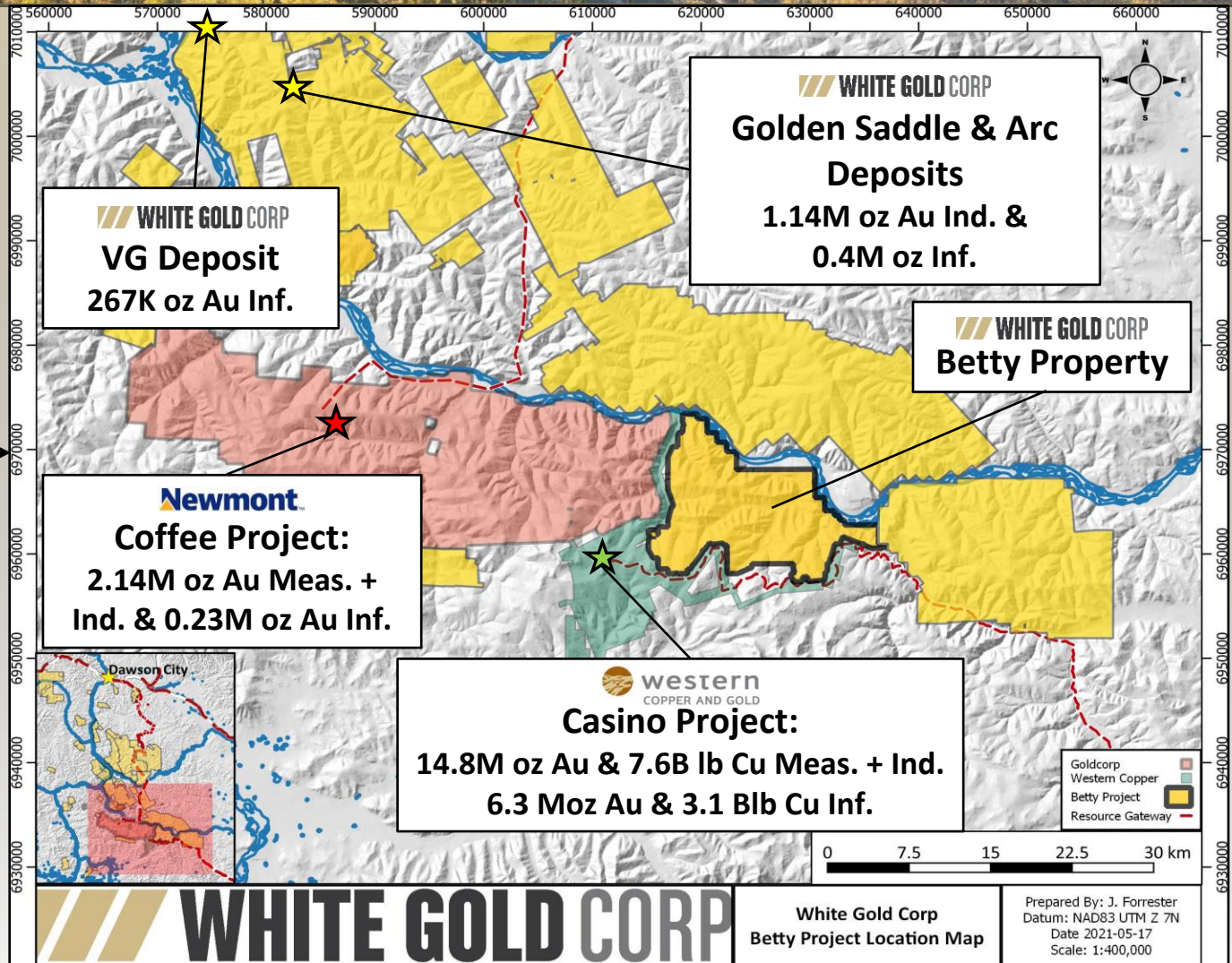
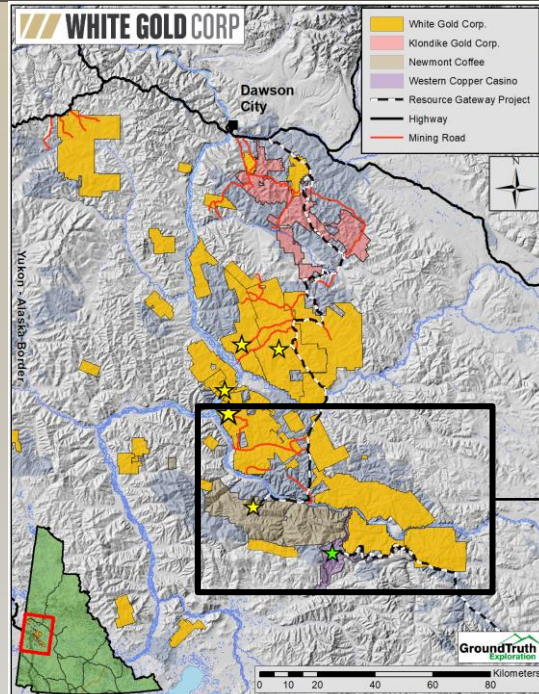


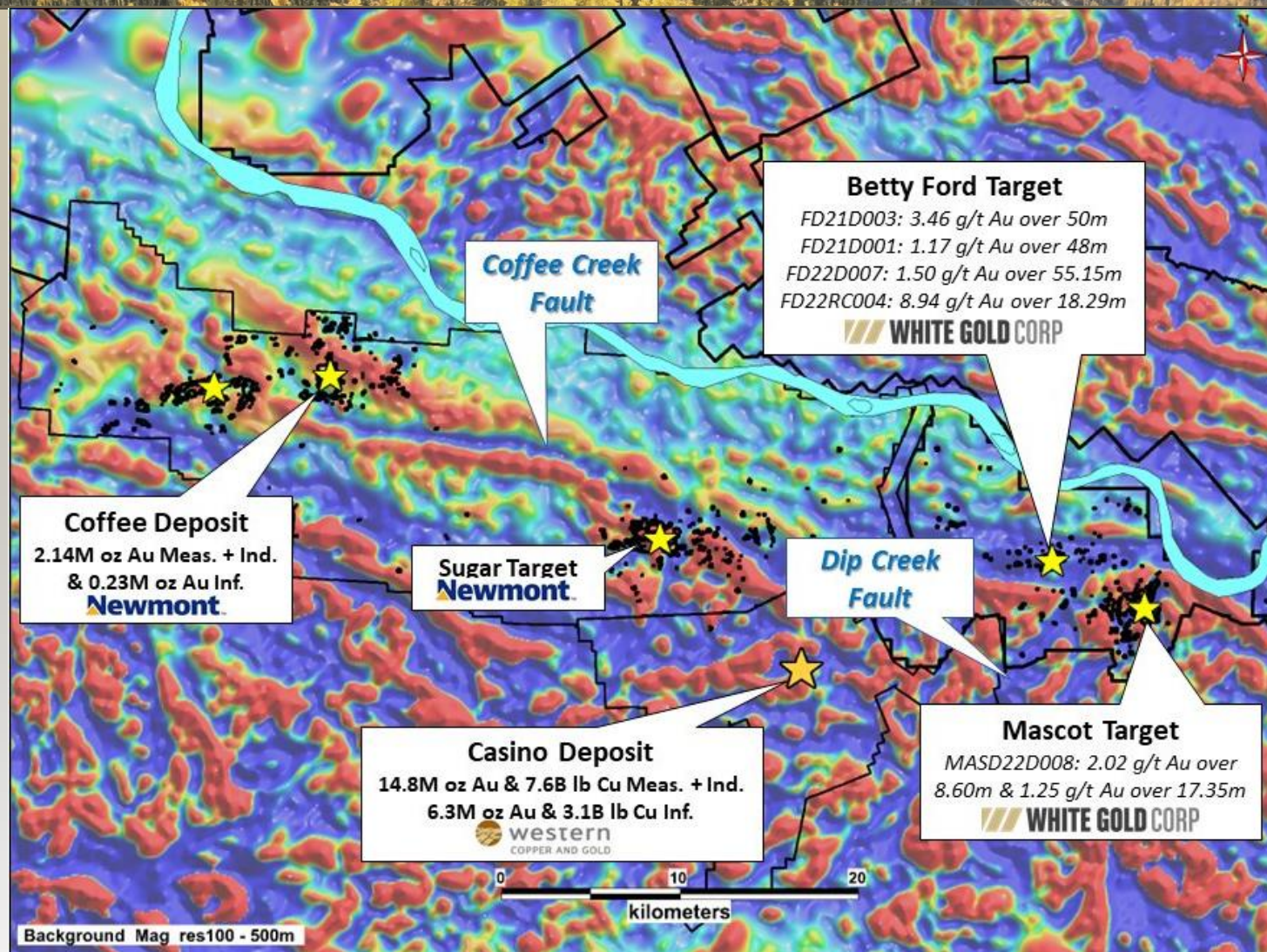
2021 Drilling Program (7 DDH, 1,408m)

Hole ID	From (m)	To (m)	Length (m)	Gold (g/t)
WHTULR21D001	9.00	14.13	5.13	2.04
WHTULR21D002	125.50	129.60	4.10	2.44
WHTULR21D003	53.86	58.35	4.49	1.91
WHTULR21D004	35.20	35.90	0.70	10.30
	64.50	84.00	19.50	6.94
Inc.	65.50	67.00	1.50	39.10
And	74.25	79.55	5.30	10.52
Inc.	75.25	76.08	0.83	45.40
WHTULR21D005	139.50	158.00	18.50	1.36
WHTULR21D006	219.60	221.30	1.70	4.26
WHTULR21D007	164.55	169.20	4.65	2.50

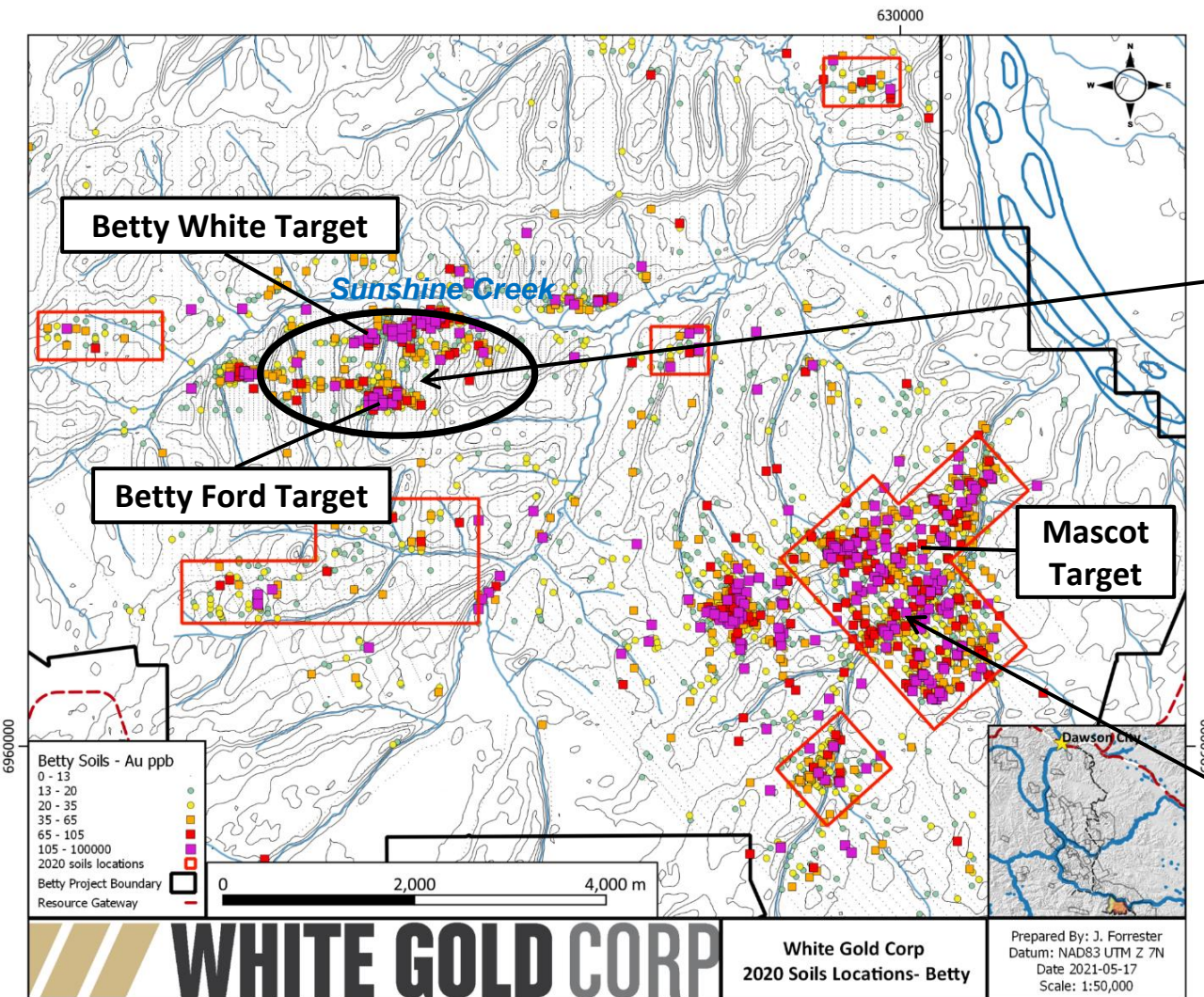
BETTY PROPERTY

WHITE GOLD CORP





BETTY PROPERTY HISTORICAL



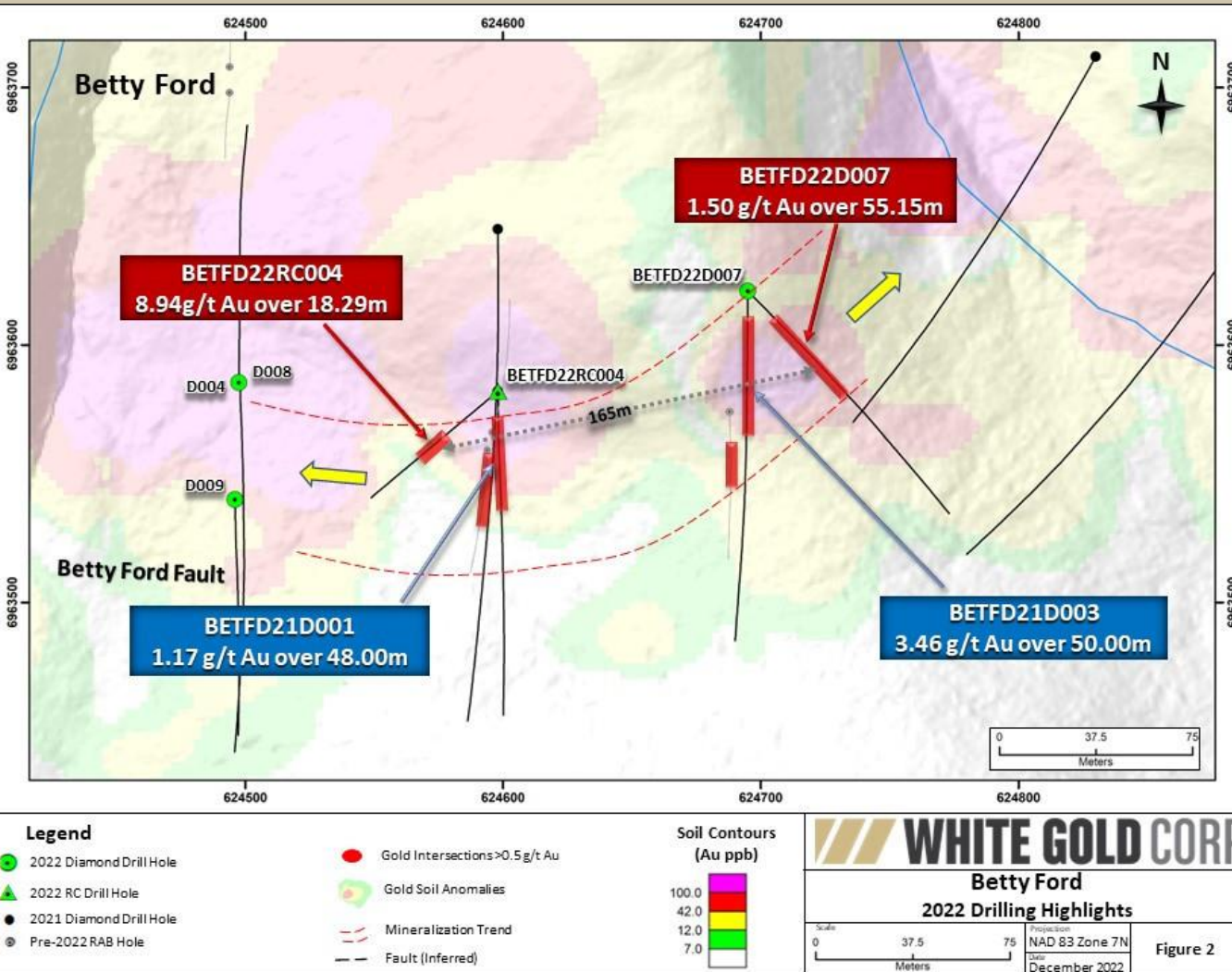
White Gold Corp. – 2018 RAB Drilling Highlights:

Zone	Hole ID	From (m)	To (m)	Length (m)	Gold (g/t)
Betty Ford	BETFRDRAB18-001	19.81	44.20	24.39	0.94
	incl.	27.43	36.58	9.15	1.72
Betty Ford	BETFRDRAB18-002	4.57	54.86	50.29	1.08
	incl.	19.81	28.96	9.15	2.24
Betty Ford	BETFRDRAB18-003	0.00	13.72	13.72	0.75
	incl.	0.00	4.57	4.57	1.23

Ethos Gold Corp. – 2012 RC Drilling Highlights:

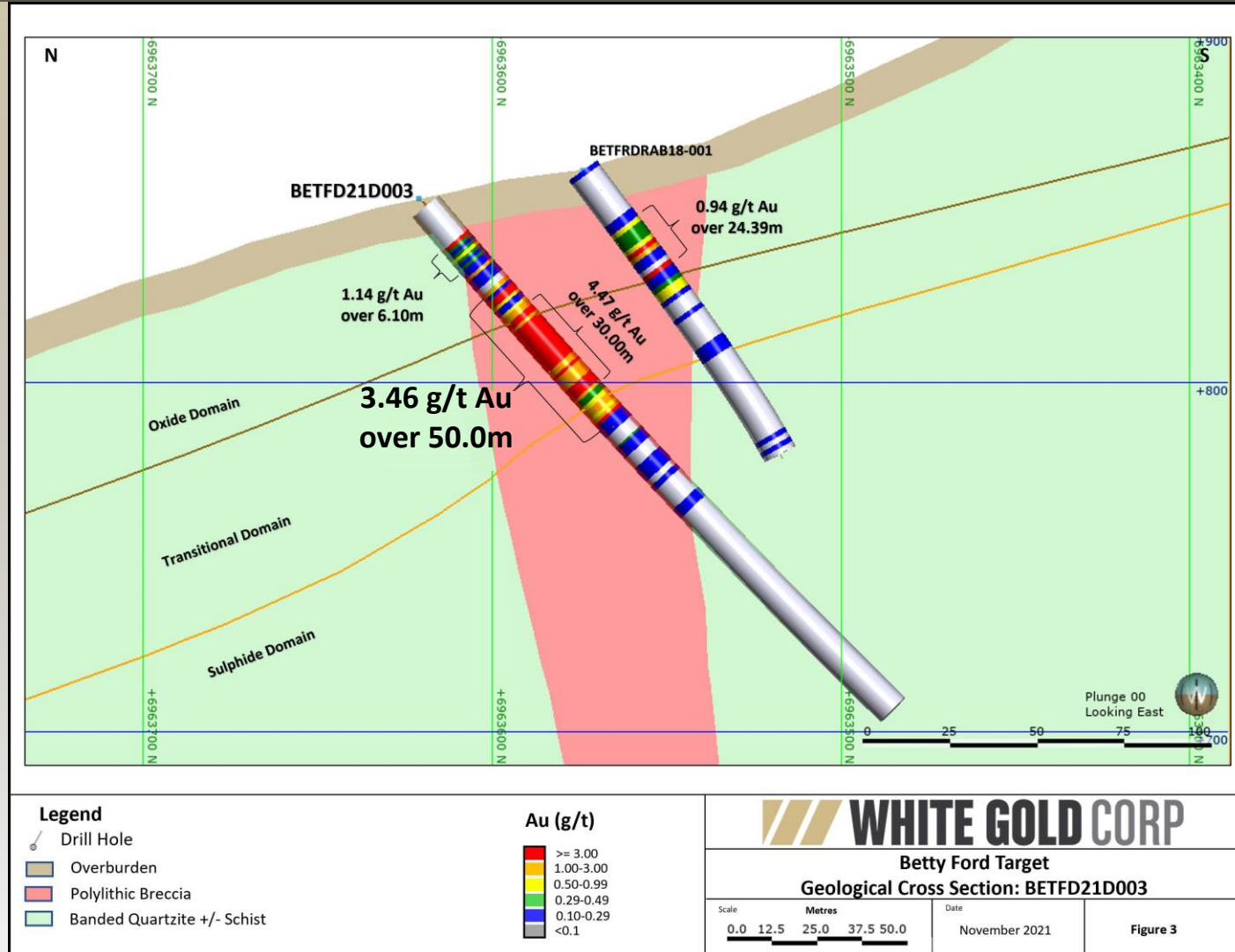
Zone	Hole ID	From (m)	To (m)	Length (m)	Gold (g/t)
Page	BETR12-022	16.80	57.90	41.10	2.62
	incl.	27.40	38.10	10.70	8.68
Boop	BETR12-012	27.10	30.20	3.10	29.75
Boop	BETR12-014	109.70	120.40	10.70	2.19
	incl.	109.70	112.80	3.10	6.05
Davis	BETR12-007	55.50	76.80	21.30	1.48
	incl.	70.70	76.80	6.10	2.89

BETTY FORD TARGET



Hole ID	From (m)	To (m)	Length (m)	Gold (g/t)
BETFD21D001	19.00	67.00	48.00	1.17
Inc.	23.00	50.00	27.00	1.54
BETFD21D003	33.00	83.00	50.00	3.46
Inc.	44.00	74.00	30.00	4.47
Inc.	44.00	63.00	19.00	5.25
BETFD22D007	22.85	78.00	55.15	1.50
Inc.	44.00	49.00	5.00	4.29
Inc.	61.00	67.00	6.00	2.67
BETFD22RC004	35.05	53.34	18.29	8.94
Inc.	45.72	51.82	6.10	21.73

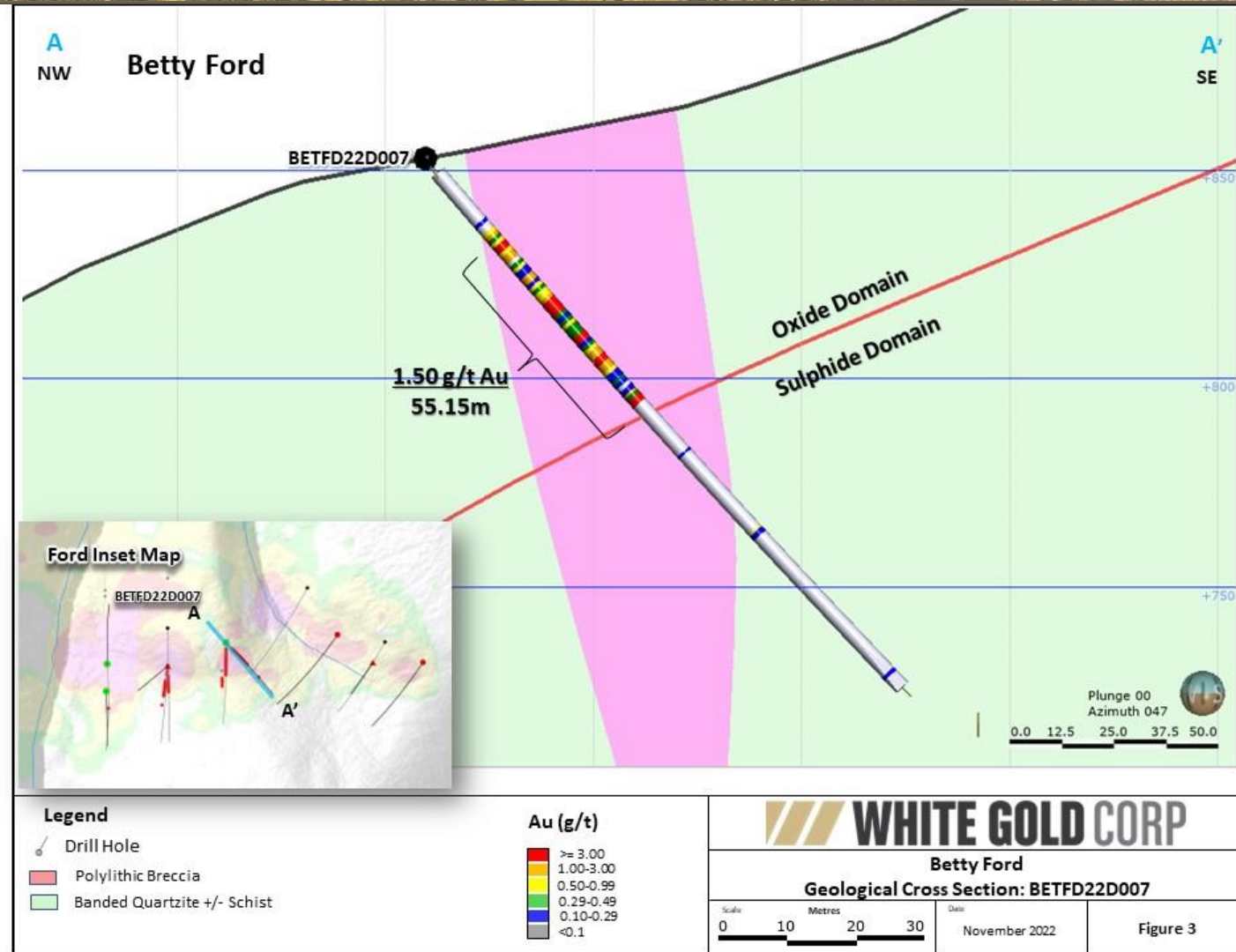
BETTY FORD TARGET CROSS SECTION



BETTY FORD TARGET 21D003 CORE



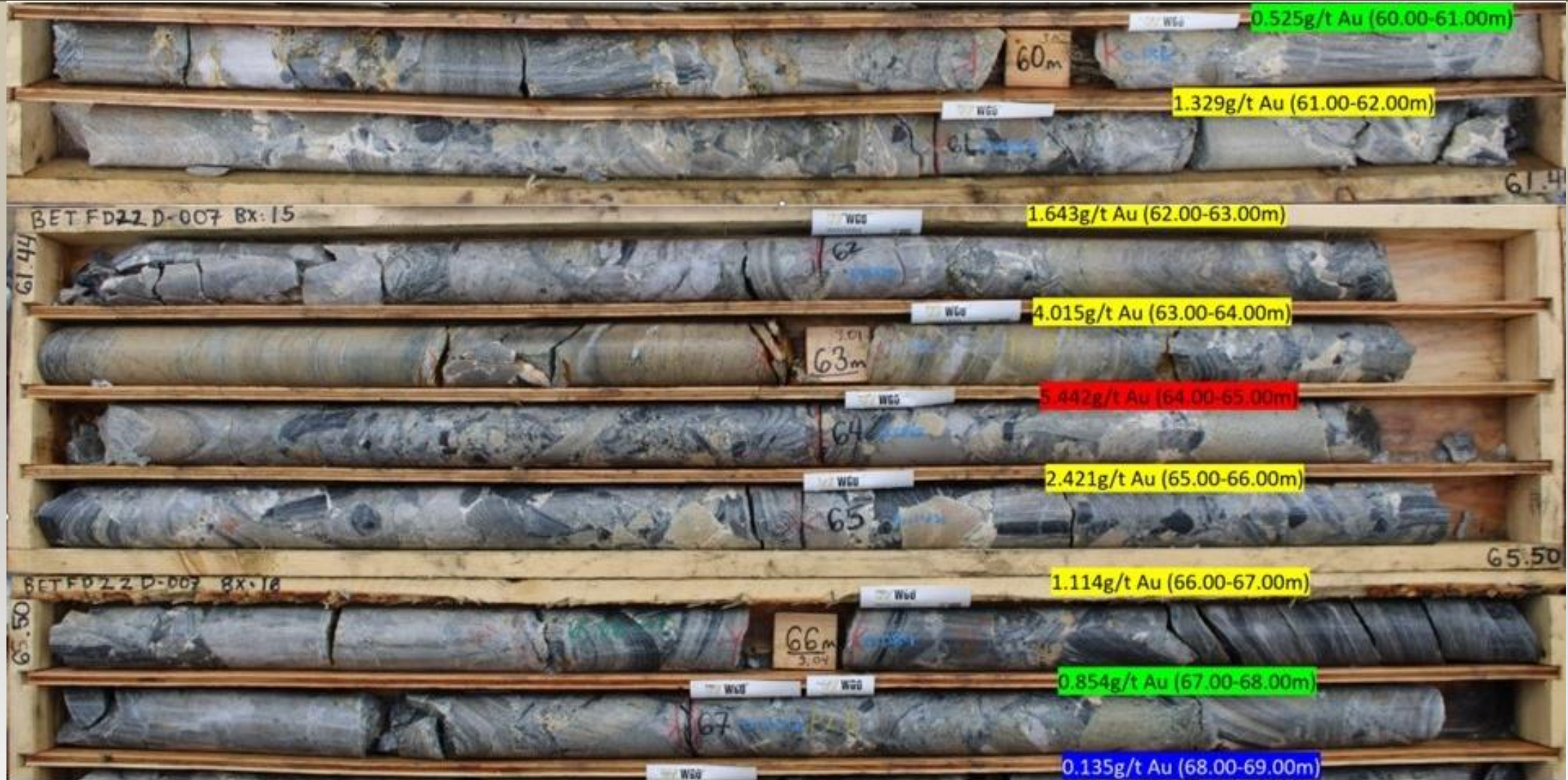
BETTY FORD TARGET CROSS SECTION



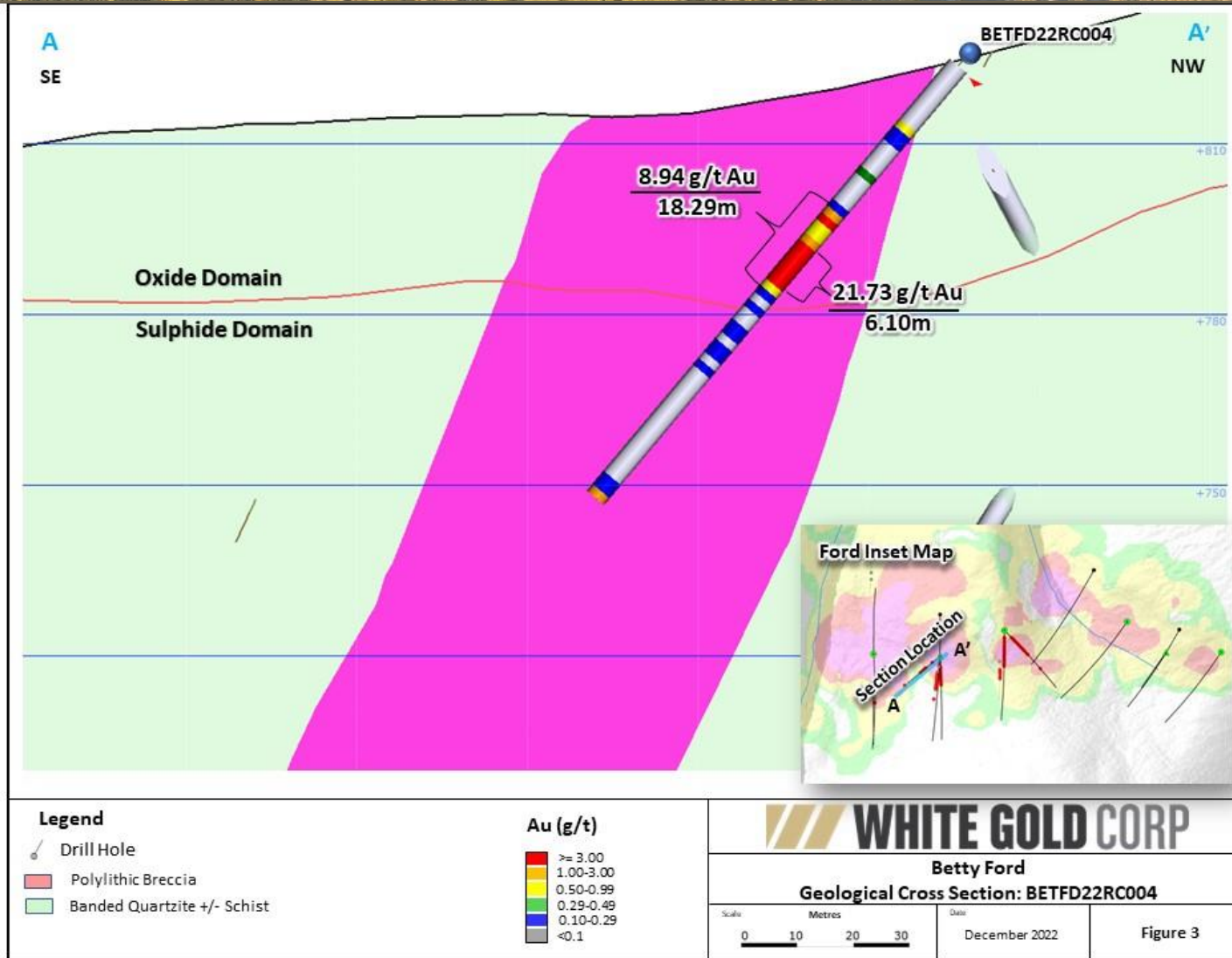
BETTY FORD TARGET 22D007 CORE



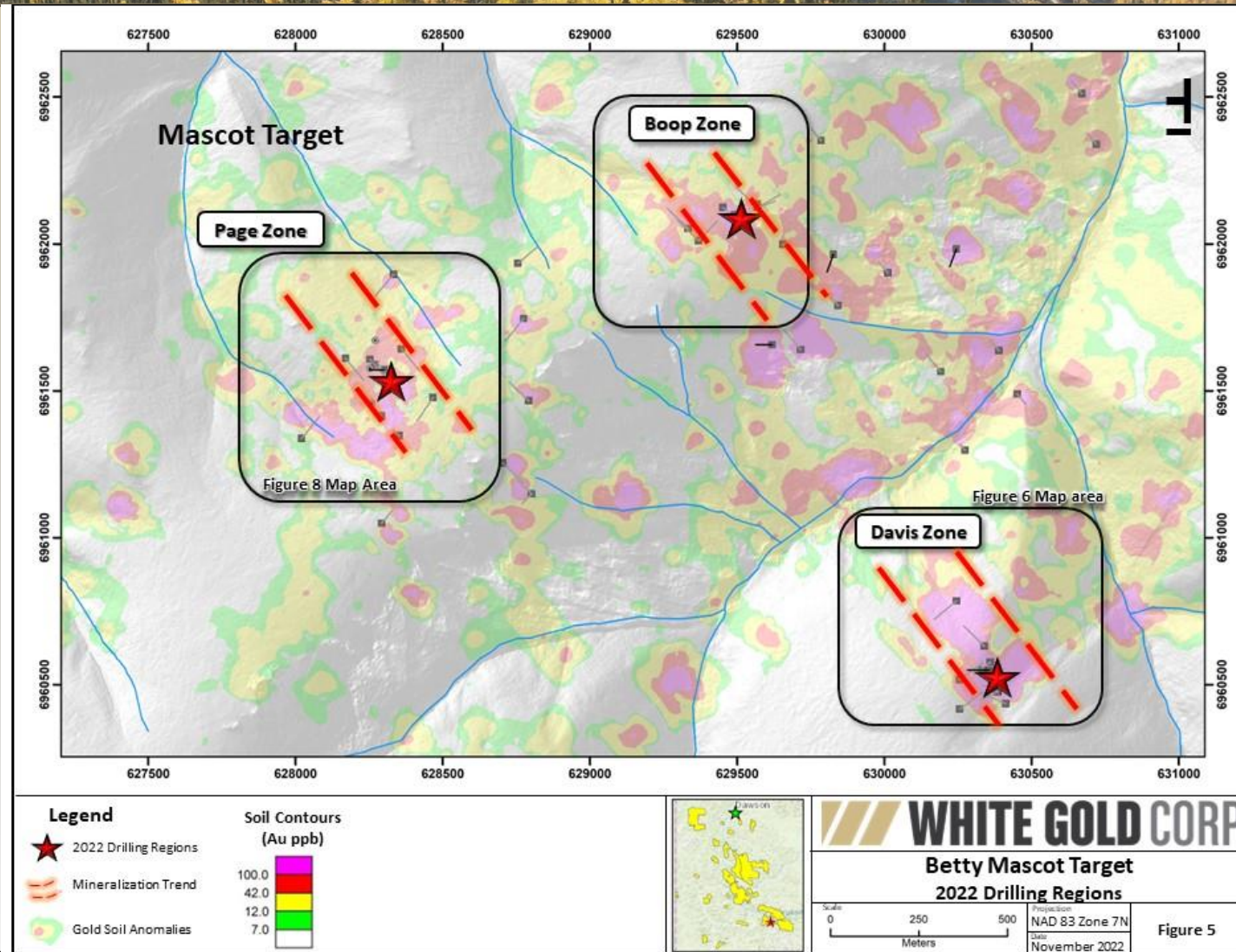
WHITE GOLD CORP



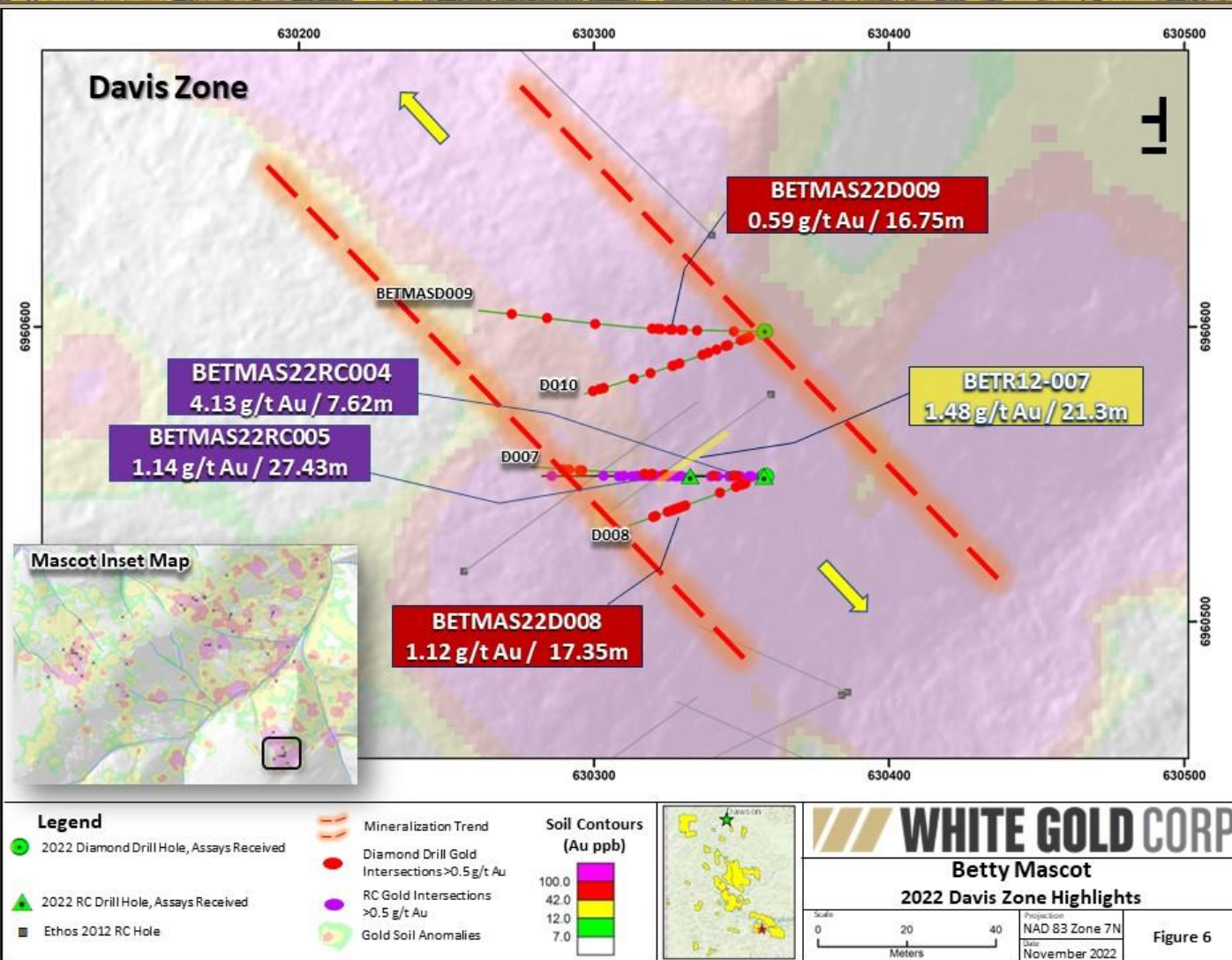
BETTY FORD TARGET CROSS SECTION



BETTY MASCOT OVERVIEW



BETTY MASCOT – DAVIS ZONE 2022 DRILLING



Davis Zone – 2022 RC Drilling Highlights:

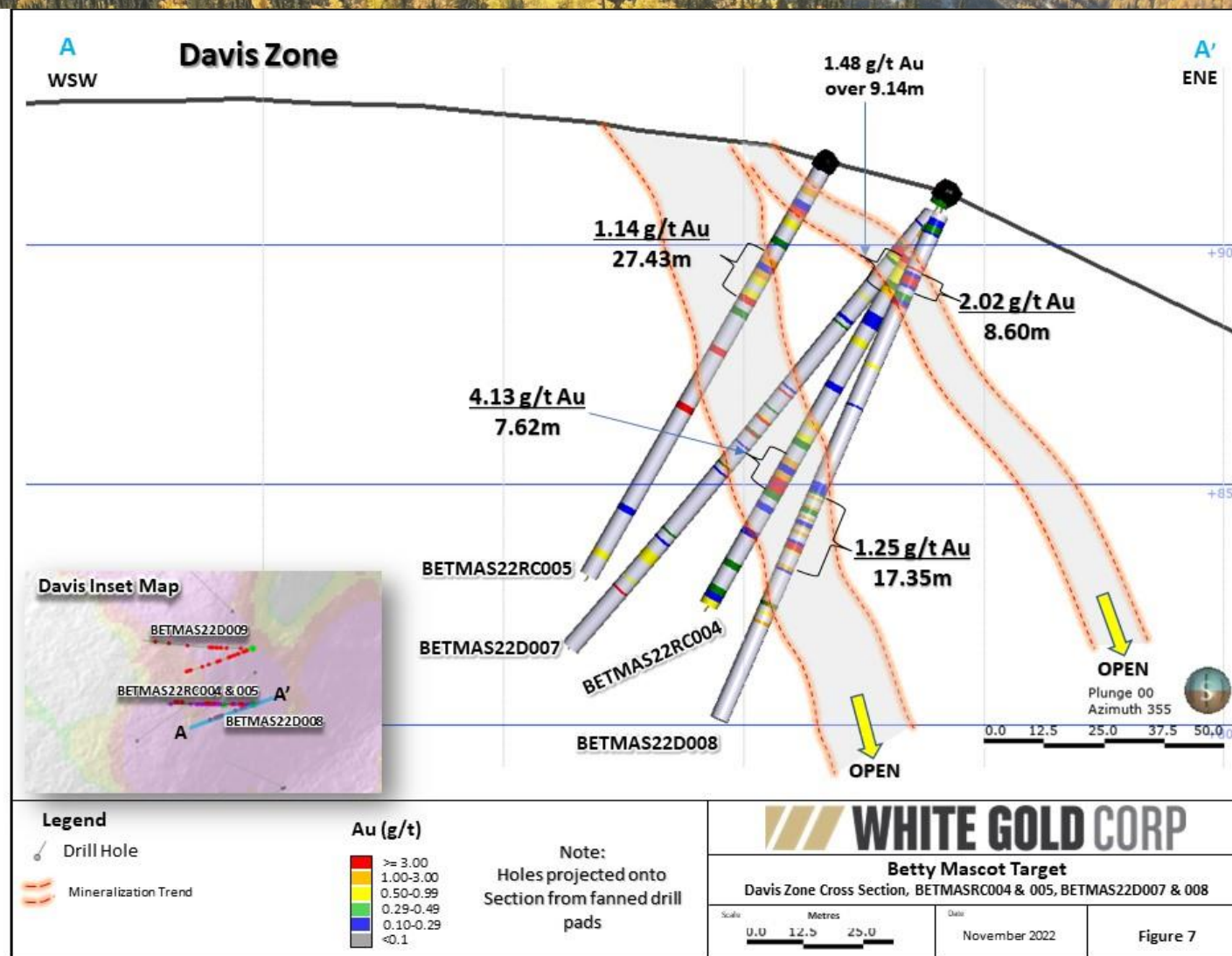
Hole ID	From (m)	To (m)	Length (m)	Au (g/t)	Ag (g/t)
BETMAS22RC004	7.62	10.67	3.05	1.24	0.41
	15.24	24.38	9.14	1.48	0.39
	64.01	71.63	7.62	4.13	0.62
Incl.	70.10	71.63	1.52	12.90	1.64
BETMAS22RC005	6.10	33.53	27.43	1.14	0.48
Incl.	32.00	33.53	1.53	8.74	0.46

Davis Zone – 2022 Diamond Drilling Highlights:

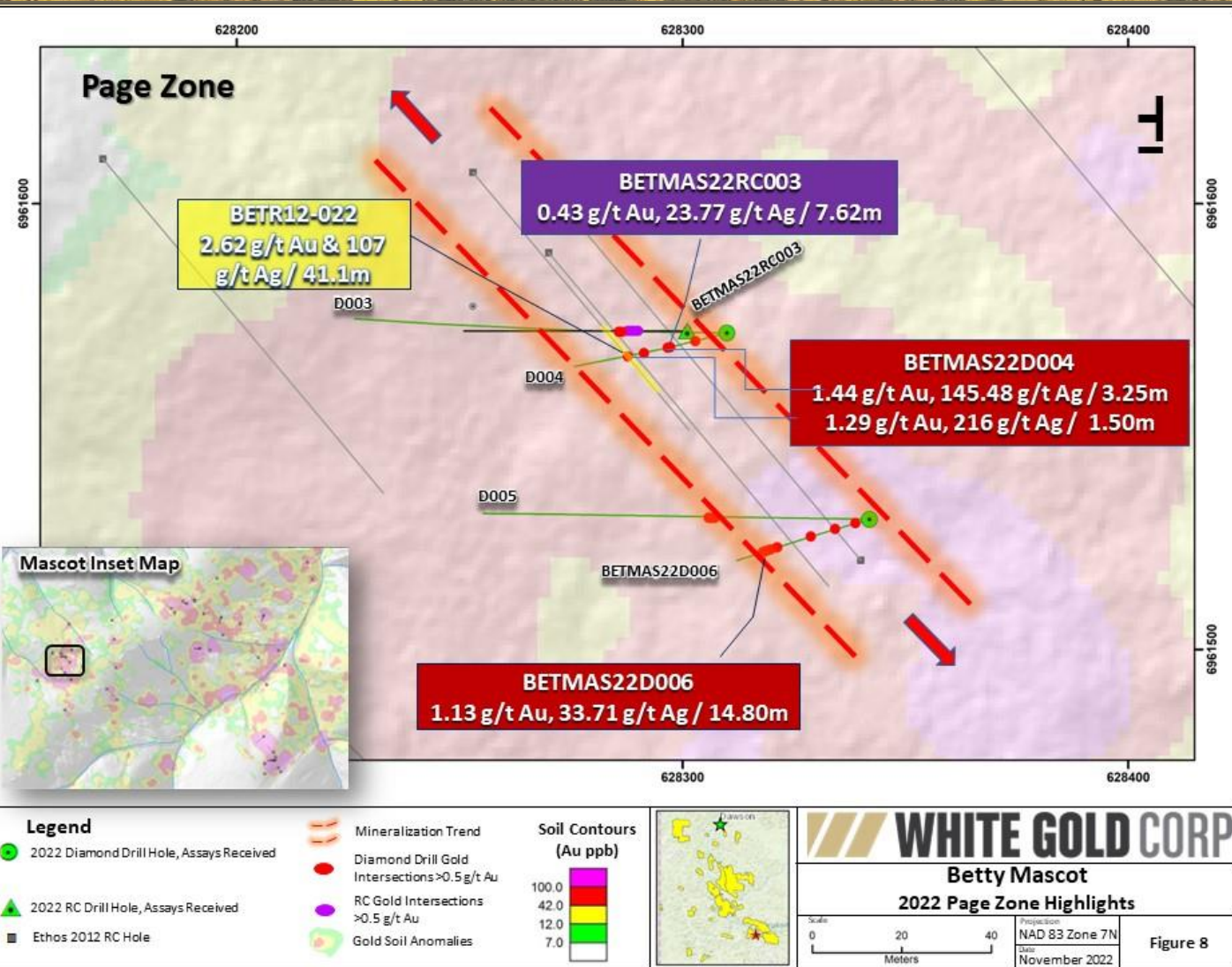
Hole ID	From (m)	To (m)	Length (m)	Au (g/t)	Ag (g/t)
BETMAS22D007	13.75	17.70	3.95	2.85	0.31
	15.55	16.45	0.90	4.42	0.37
	60.00	61.25	1.25	4.17	0.51
	105.90	107.50	1.60	7.42	4.32
Incl.	107.00	107.50	0.50	23.70	13.72
BETMAS22D008	17.25	25.85	8.60	2.02	0.80
	68.50	85.85	17.35	1.25	0.36
Incl.	80.10	80.85	0.75	15.60	2.98
BETMAS22D009	15.95	16.75	0.80	1.75	1.35
	42.95	59.70	16.75	0.59	1.20
	88.85	89.45	0.60	1.31	3.19
BETMAS22D010	16.50	21.00	4.50	1.11	0.72
	49.00	49.50	0.50	8.94	0.92
	78.10	81.05	2.95	1.29	1.35
	113.50	114.30	0.80	4.54	0.11
	142.50	143.00	0.50	3.41	1.33

BETTY MASCOT – DAVIS ZONE CROSS SECTION

WHITE GOLD CORP



BETTY MASCOT – PAGE ZONE 2022 DRILLING



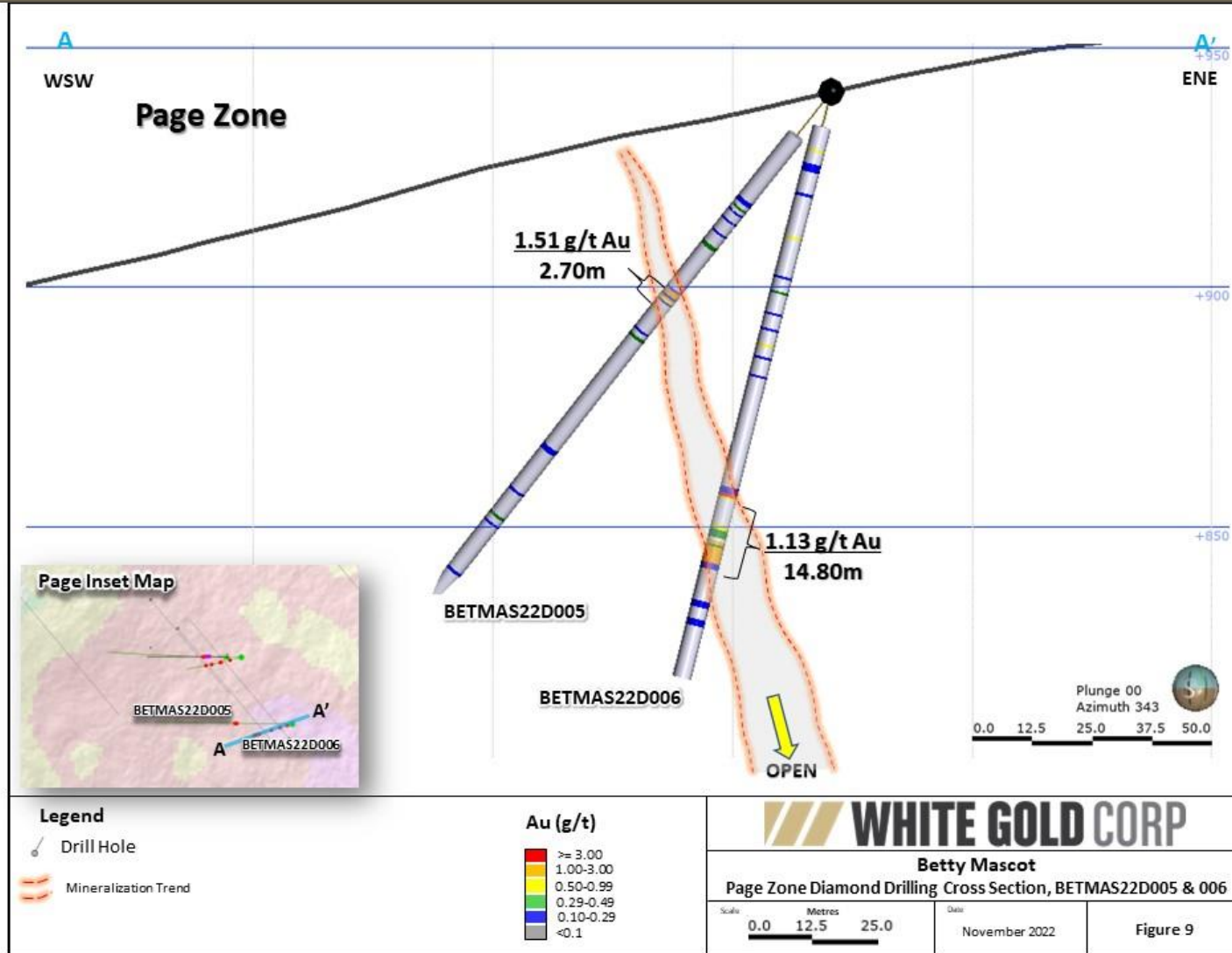
Page Zone – 2022 RC Drilling Highlights:

Hole ID	From (m)	To (m)	Length (m)	Au (g/t)	Ag (g/t)	Zn (%)	Pb (%)
BETMAS22RC003	19.81	27.43	7.62	0.43	23.77	0.75	0.21

Page Zone – 2022 Diamond Drilling Highlights:

Hole ID	From (m)	To (m)	Length (m)	Au (g/t)	Ag (g/t)	Zn (%)	Pb (%)
BETMAS22D003	36.40	38.45	2.05	1.56	60.65	1.13	0.53
BETMAS22D004	48.95	52.20	3.25	1.44	145.48	1.49	0.86
Incl.	50.70	52.20	1.50	2.38	271.00	3.03	1.69
	55.95	57.80	1.85	0.29	67.59	1.35	0.51
	70.70	72.20	1.50	1.29	216.00	1.34	1.53
BETMAS22D005	53.80	56.50	2.70	1.51	97.50	2.10	0.75
Incl.	53.80	54.35	0.55	1.43	101.96	3.64	0.82
And	55.50	56.00	0.50	2.32	257.00	3.11	2.06
BETMAS22D006	86.50	101.30	14.80	1.13	33.71	0.37	0.20
Incl.	86.50	87.20	0.70	8.44	43.31	1.29	0.18

BETTY MASCOT – PAGE ZONE CROSS SECTION





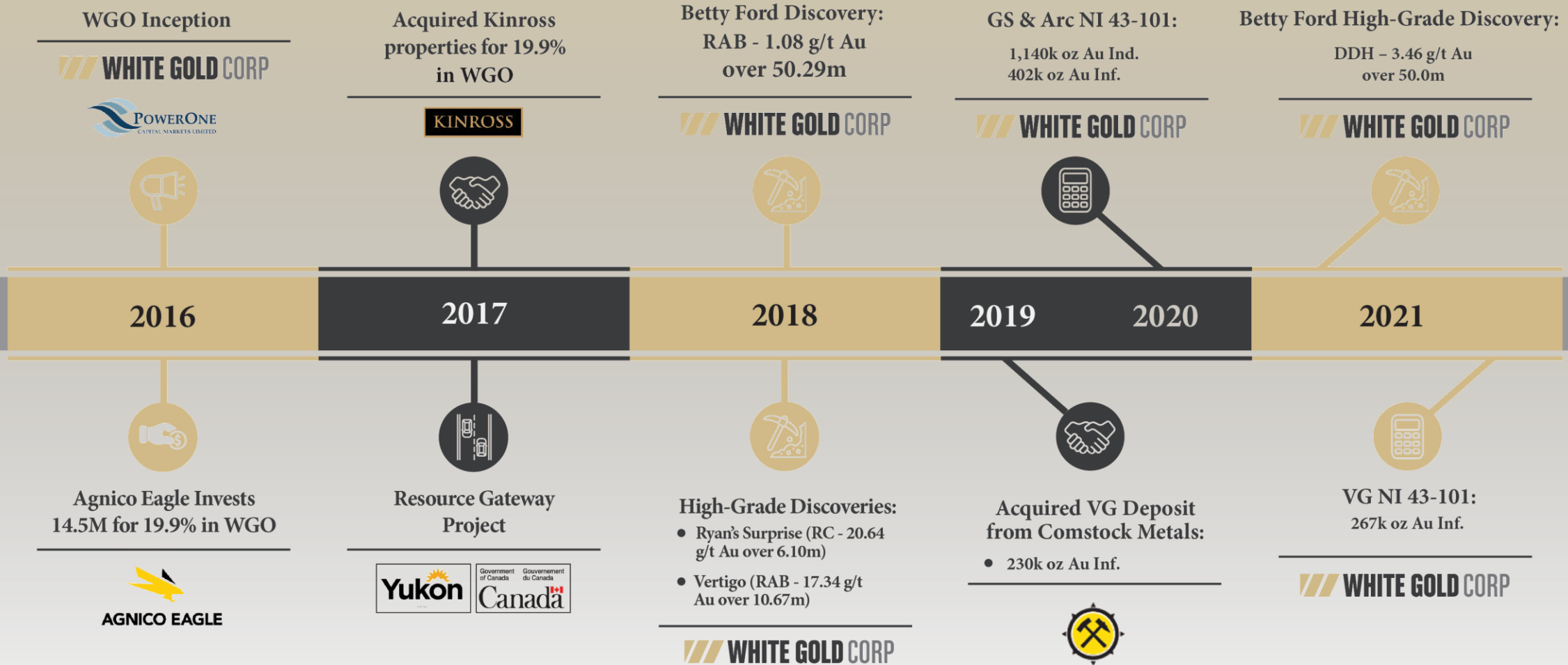
TSX-V: WGO | OTC: WHGOF | FRA: 29W

82 Richmond St E, Toronto, Ontario M5C 1P1

ir@whitegoldcorp.ca

(647) 930-1880

KEY EVENTS TIMELINE

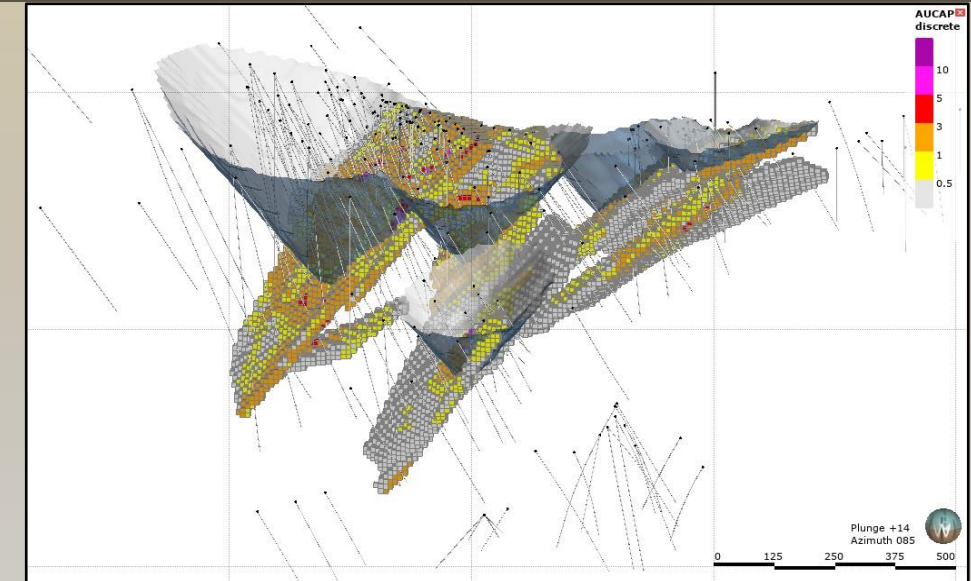
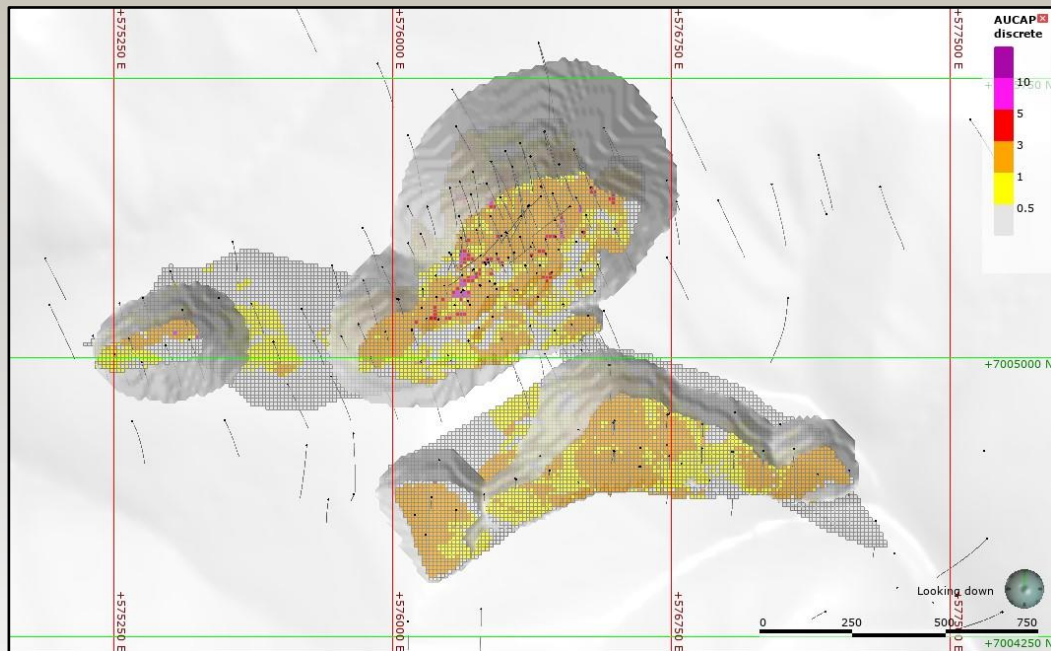


GOLDEN SADDLE & ARC DEPOSITS



The Project:

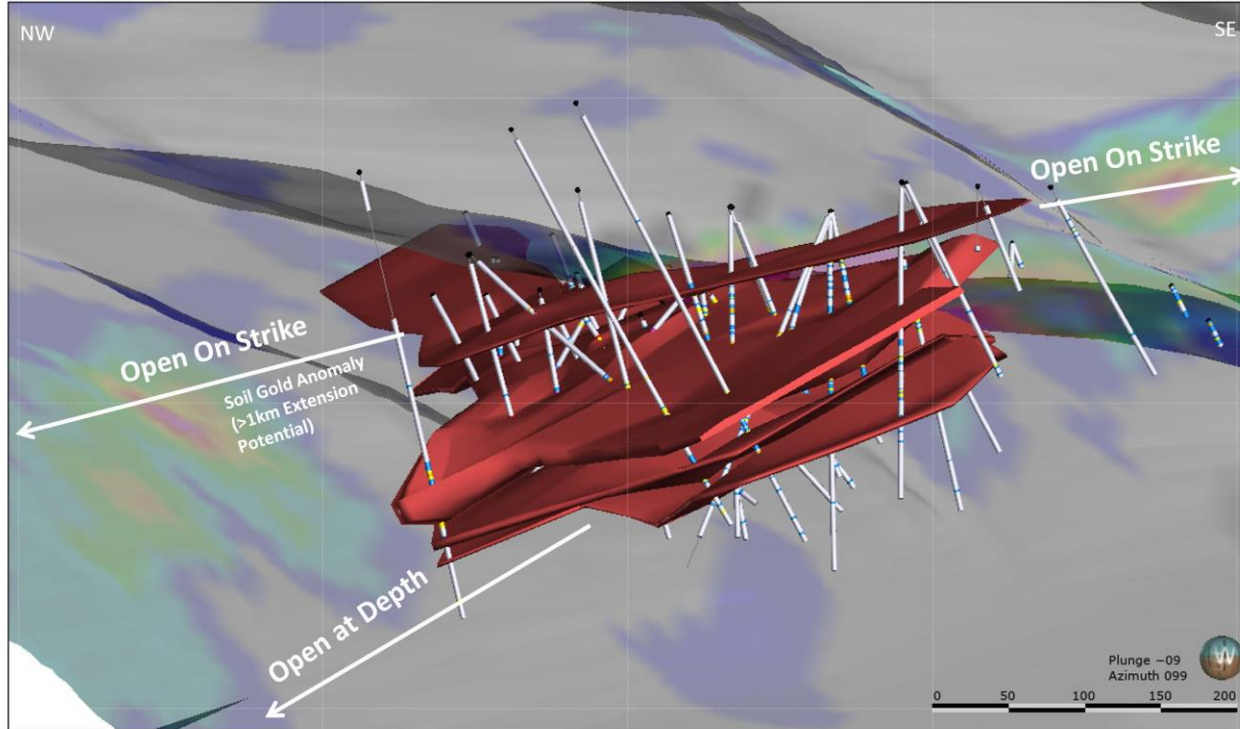
- First discovery in the White Gold District
- Located 95 km south of Dawson City, Yukon
- Airstrip, barge access, and a fully operational exploration camp
- Mineralization known to extend beyond the limits of the current resource
- Excellent untested exploration potential in surrounding area



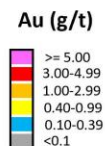
2020 Mineral Resource Estimate (White Gold Corp.)

Area	Type	Classification	Cut-off (g/t)	Tonnes (000's)	Grade (g/t)	Contained Gold (oz)
GS	Open Pit	Indicated	0.5	14,815	2.31	1,098,300
		Inferred		3,454	1.43	159,100
	Underground	Indicated	3	143	4.53	20,800
		Inferred		326	4.33	45,300
Arc	Open Pit	Indicated	0.5	613	1.06	20,800
		Inferred		5,221	1.18	197,700

VG DEPOSIT



- Legend**
- Drill Hole
 - Gold Bearing Structure
 - Gold Soil Anomalies



QV Project
VG Deposit Isometrics of VG Zone



Date
November 2021

Figure 3

- Located approximately 11 km north of the Golden Saddle deposit, with similar geology and gold mineralogy
- 267,600 oz Au inferred
- VG deposit remains open along strike and downdip

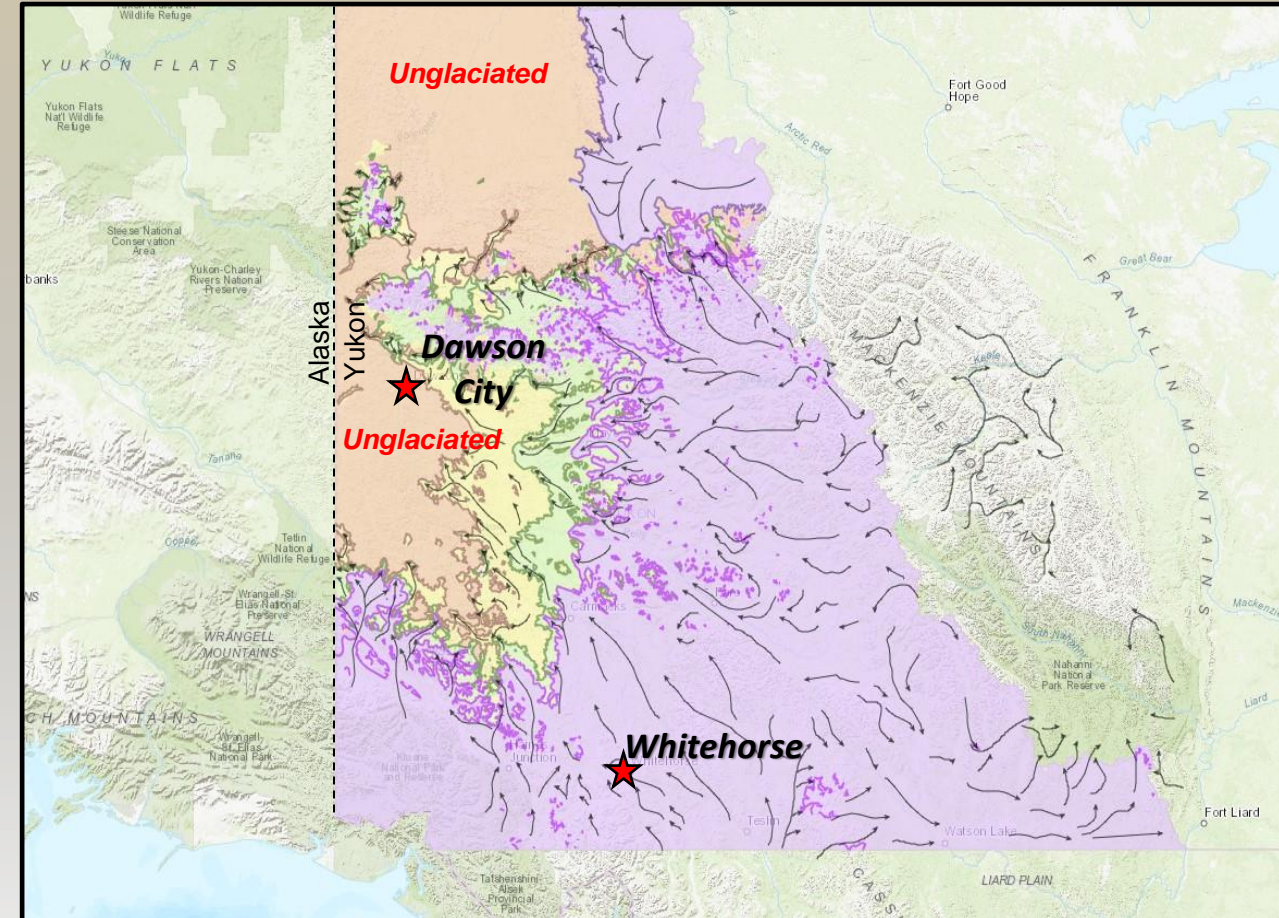
2021 Mineral Resource Estimate

Deposit	Classification	Cut-off (g/t)	Tonnes (000's)	Grade (g/t)	Contained Gold (oz)
VG	Inferred	0.5	5,264	1.62	267,600

EXPLORATION APPROACH – UNIQUE TERRAIN



- While the rest of Canada was almost entirely covered by glacial ice during the last ice age, portions of the Yukon were ice-free – including the White Gold District
- Large ice-free region extended from central and northern Yukon across Alaska, and westward to northern Asia – forming a vast ice-free wilderness area where herds of grazing mammals and their predators (many now extinct) roamed
- An extensive thin (generally $\leq 2\text{-}3\text{m}$) veneer of overburden is characteristic, directly impacting exploration approach:
 - ❑ Strong initial focus on soil geochemistry surveys (400,000+ samples in company database) – finding the haystacks...
 - ❑ Successful utilization of GT Probe (soil-bedrock interface sampling) and low-cost Rotary Air Blast (RAB) drilling to better screen and define surface targets before diamond drilling
 - ❑ Conventional geological, geochemical and geophysical exploration techniques

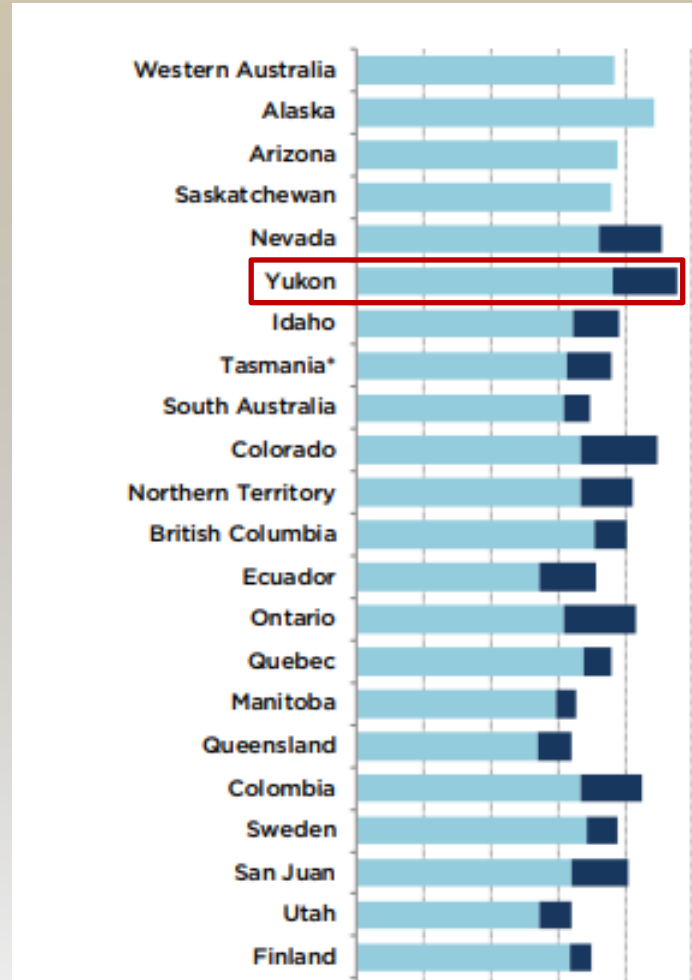


Tier 1 Jurisdiction

Investment Attractiveness Index



Best Practices Mineral Potential Index



- Annual survey conducted by Fraser Institute ranks Yukon, Canada as a top jurisdiction in the Investment Attractiveness Index and the Best Practices Mineral Potential Index
- Yukon has been consistently ranked a top jurisdiction in the last 5 years in both the Investment Attractiveness and Mineral Potential categories
- Supportive government and First Nation groups, favourable mining exploration policies, strong infrastructure initiatives, and historically underexplored contribute to Yukon's place as a tier 1 jurisdiction in the world

Source: Fraser Institute Annual Survey of Mining Companies 2021

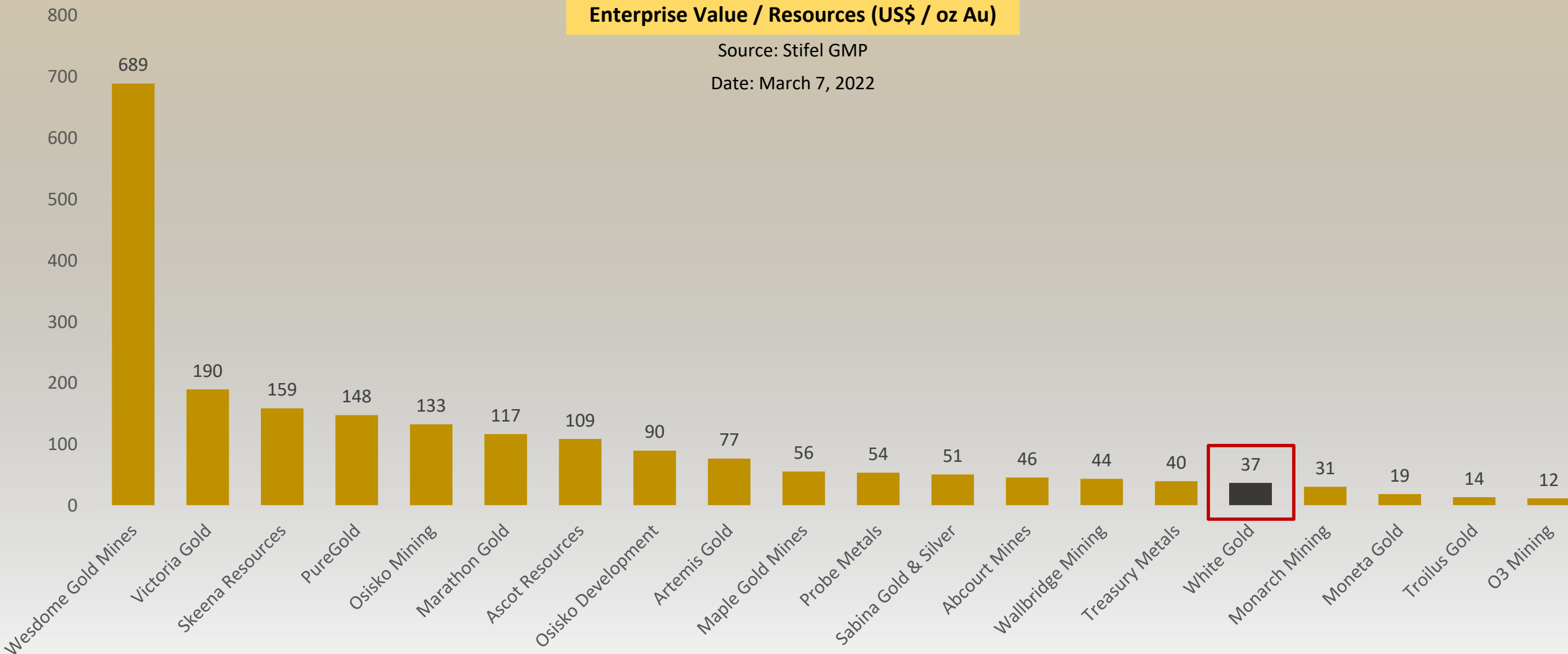
COMPARABLE ANALYSIS



Enterprise Value / Resources (US\$ / oz Au)

Source: Stifel GMP

Date: March 7, 2022



SEASONALITY

