



WHITE GOLD CORP

Corporate Overview – Sept 2023

TSX-V: WGO | OTCQX: WHGOF | FRA: 29W

Leading Yukon's Modern Gold Rush

IMPORTANT NOTICE



This presentation includes certain statements that constitute “forward-looking statements”, and “forward-looking information” within the meaning of applicable Canadian and United States securities laws (“forward-looking statements” and “forward-looking information” are collectively referred to as “forward-looking statements”, unless otherwise noted). All statements, other than statements of historical fact, may be forward-looking statements. Forward-looking statements are often, but not always, identified by the use of words such as “believe”, “anticipate”, “estimate”, “project”, “intend”, “expect”, “may”, “will”, “plan”, “should”, “would”, “contemplate”, “possible”, “attempts”, “seeks”, “goals”, “targets” and similar expressions. These forward-looking statements appear in a number of places and include statements regarding our intent, or the beliefs or current expectations of our officers and directors. Forward-looking statements may relate to the Company’s future outlook and anticipated events or results and may include statements regarding the White Gold properties mentioned herein, including, but not limited to, exploration and development plans with respect thereto and exercise of the Option, other exploration and development activities, the Company’s future financial position, business strategy, budgets, litigation, projected costs, financial results, taxes, plans and objectives. We have based these forward-looking statements largely on our current expectations and projections about future events and financial trends affecting the financial condition of our business.

Forward-looking statements are based on certain estimates, expectations, analysis and opinions that management believed reasonable at the time they were made or in certain cases, on third party expert opinions. These forward-looking statements were derived utilizing numerous assumptions regarding expected growth, results of operations, performance and business prospects and opportunities, general business and economic conditions, interest rates, the supply and demand for, deliveries of, and the level and volatility of prices of gold and related products, regulatory and governmental approvals, market competition, accuracy of mineral resource and mineral reserve estimates and geological, operational and price assumptions on which such estimates are based, conditions in financial markets, future financial performance of the Company, our ability to attract and retain skilled staff, our ability to procure equipment and supplies and results of exploration and development activities. While the Company considers these assumptions to be reasonable, based on information currently available, they may prove to be incorrect. Accordingly, you are cautioned not to put undue reliance on these forward-looking statements. Forward-looking statements should not be read as a guarantee of future performance or results. To the extent any forward-looking statements constitute future-oriented financial information or financial outlooks, as those terms are defined under applicable Canadian securities laws, such statements are being provided to describe the current anticipated potential of the Company and readers are cautioned that these statements may not be appropriate for any other purpose, including investment decisions.

Such forward-looking statements involve known and unknown risks and uncertainties and other factors that may cause our actual events, results, performance or achievements to be materially different from any future events, results, performance or achievements expressed or implied by such forward-looking statements. Risks and uncertainties that may cause actual events, results, performance or achievements to vary materially include, but are not limited to, risks inherent to mineral exploration and development activities, changes in gold prices, changes in interest and currency exchange rates, inaccurate geological and metallurgical assumptions, unanticipated operational difficulties, government action or delays in the receipt of government approvals, adverse weather conditions, unanticipated events related to health, safety and environmental matters, labor disputes, political risk, social unrest, failure of counterparties to perform their contractual obligations, changes or further deterioration in general economic conditions, and other risks discussed in under the heading “Risks and Uncertainties” in the Company’s most recently filed MD&A.

Forward-looking statements speak only as of the date those statements are made. Except as required by applicable law, we assume no obligation to update or to publicly announce the results of any change to any forward-looking statement contained to reflect actual results, future events or developments, changes in assumptions or changes in other factors affecting the forward-looking statements. If we update any one or more forward-looking statements, no inference should be drawn that we will make additional updates with respect to those or other forward-looking statements. You should not place undue importance or reliance on forward-looking statements. All forward-looking statements contained in this presentation are expressly qualified in their entirety by this cautionary statement.

QUALIFIED PERSON

The scientific and technical information contained in this presentation has been reviewed and approved by Terry Brace, P.Ge. and Vice President of Exploration for the Company, who is a “qualified person” within the meaning of National Instrument 43-101 – Standards of Disclosure of Mineral Projects.

District Scale Land Package

- Largest land holder in the White Gold District
- Tier 1 mining jurisdiction
 - 20M+ oz placer gold and 25M+ oz modern day gold discoveries
 - \$360M Resource Gateway Road infrastructure project underway
 - Ranked top 10 globally by the Fraser Institute

Unique Value Proposition

- Defined high-grade gold deposits:
 - **White Gold Project:** Four deposits totalling **1,152,900** oz Au Ind. & **942,400** oz Au Inf. Substantially near surface and open-pittable, all open along strike and at depth for expansion

Experienced Management

- Shawn Ryan – prospecting the Klondike & White Gold districts for the last **25 years**
- Terry Brace – **35 years** of mineral exploration and mine development experience
- PowerOne Group – **20+ years** of experience in investing, financing and managing public natural resource companies

Strategic Partners

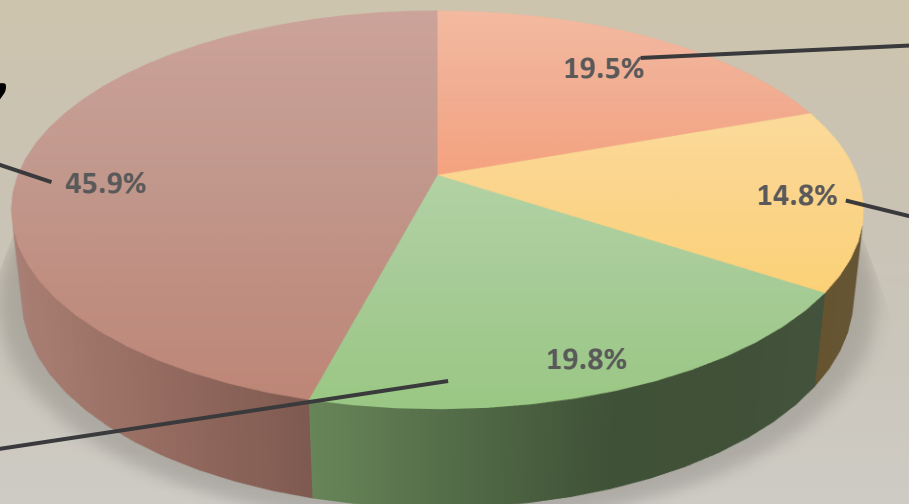
- Financial backing and technical expertise from:
 - Agnico Eagle
 - Kinross
 - Eric Sprott
- Strong capital markets relationships

CAPITAL STRUCTURE



**Eric Sprott,
Strategic Institutions,
Public Float**

**Management
& Insiders**



AGNICO EAGLE



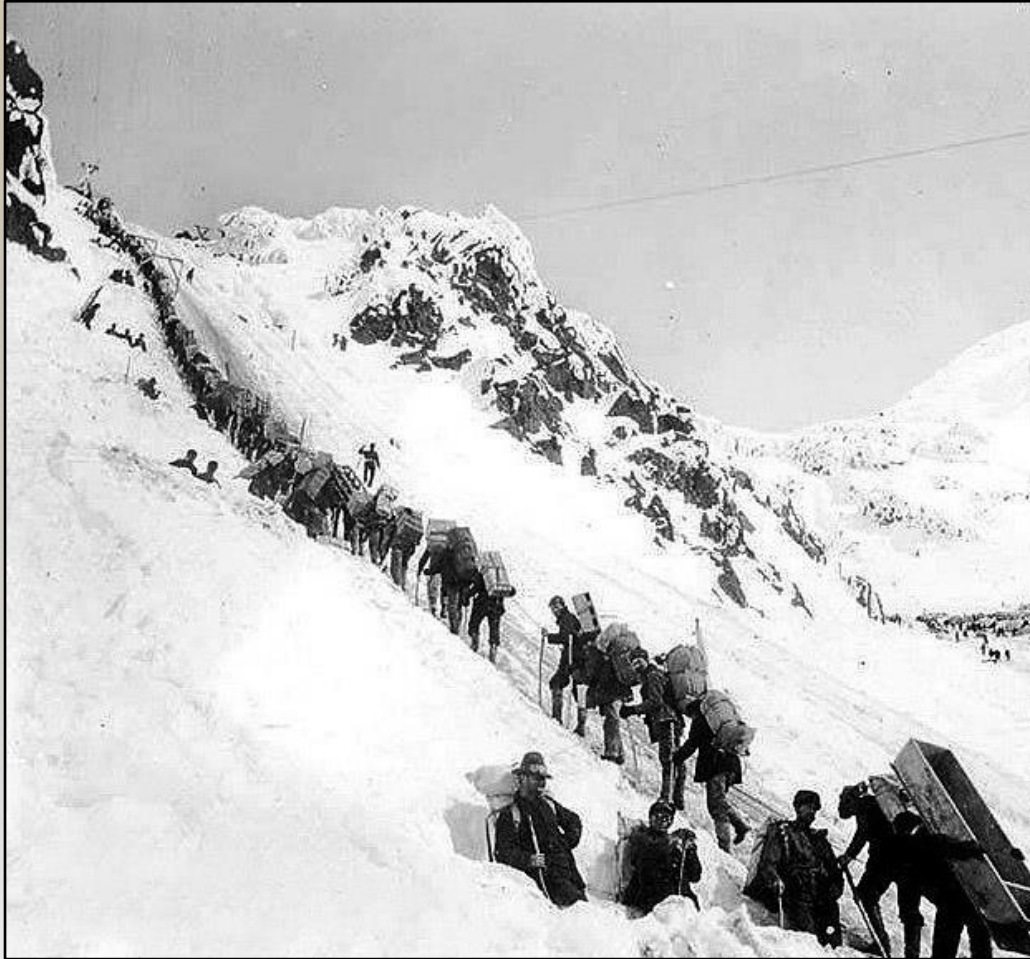
Shares Outstanding: **160.5M** | Warrants: **Nil** | Options: **9.25M**

Full Analyst Coverage:		
Firm	Recommendation	Date
Eight Capital	BUY \$3.20	October 14, 2020
Stifel Financial	SPECULATIVE BUY \$2.10	April 26, 2023
Canaccord Genuity	Watchlist	-
Clarus Securities	Watchlist	-
PI Financial	Watchlist	-

THE KLONDIKE GOLD RUSH (20Moz Placer)



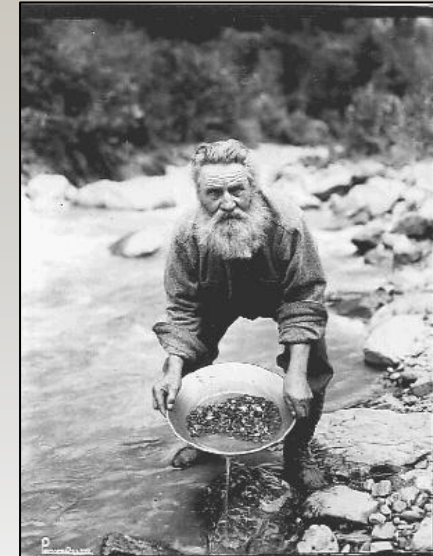
Klondike Gold Rush (1896 – 1899)



Dredge No. 4 (1913 – 1959)



White Gold Corp. is exploring for source(s) of placer gold over 125 years after the Klondike Gold Rush



PROPERTY PORTFOLIO



Largest Landholder in the District

Claims: >17,500
 Properties: 30
 Area: >350,000 Hectares
 (>865,000 Acres)

40% Of The District

Extensive Exploration Pipeline

Early-Stage Properties

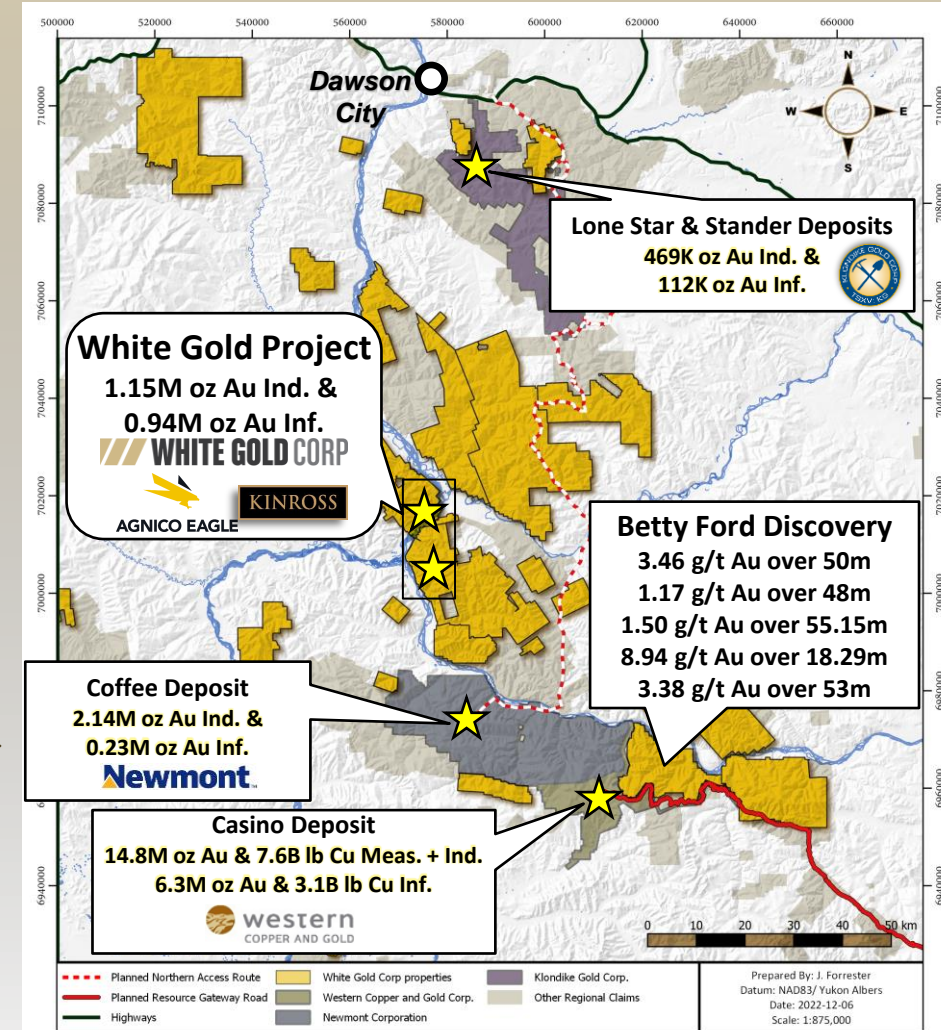
Bonanza
 Nolan
 IND
 Dime
 Hunker
 Hayes
 20+ Additional
 Properties

Discovery-Stage Projects

Betty
 Ryan's Surprise
 Ulli's Ridge
 Vertigo
 JPR Property
 (Multiple)

Advanced-Stage Projects

Golden Saddle
 Arc
 Ryan's Surprise
 VG Zone

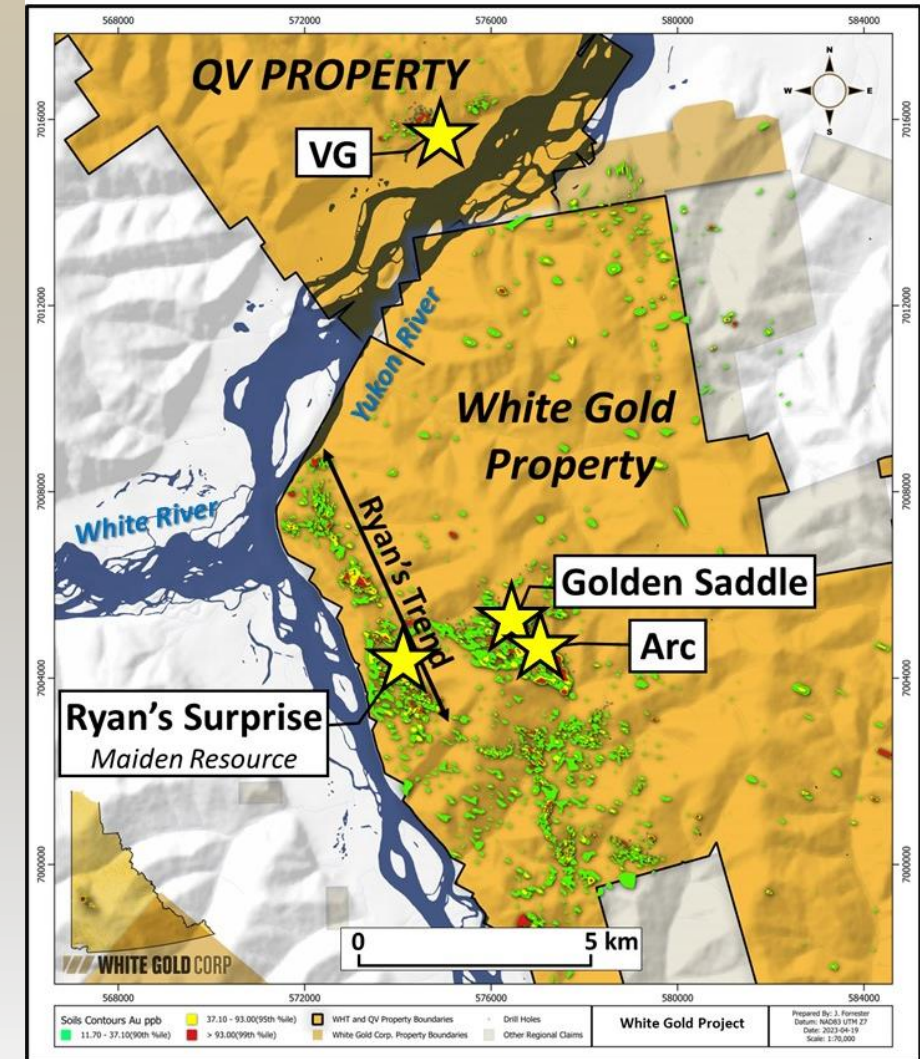


MINERAL RESOURCES

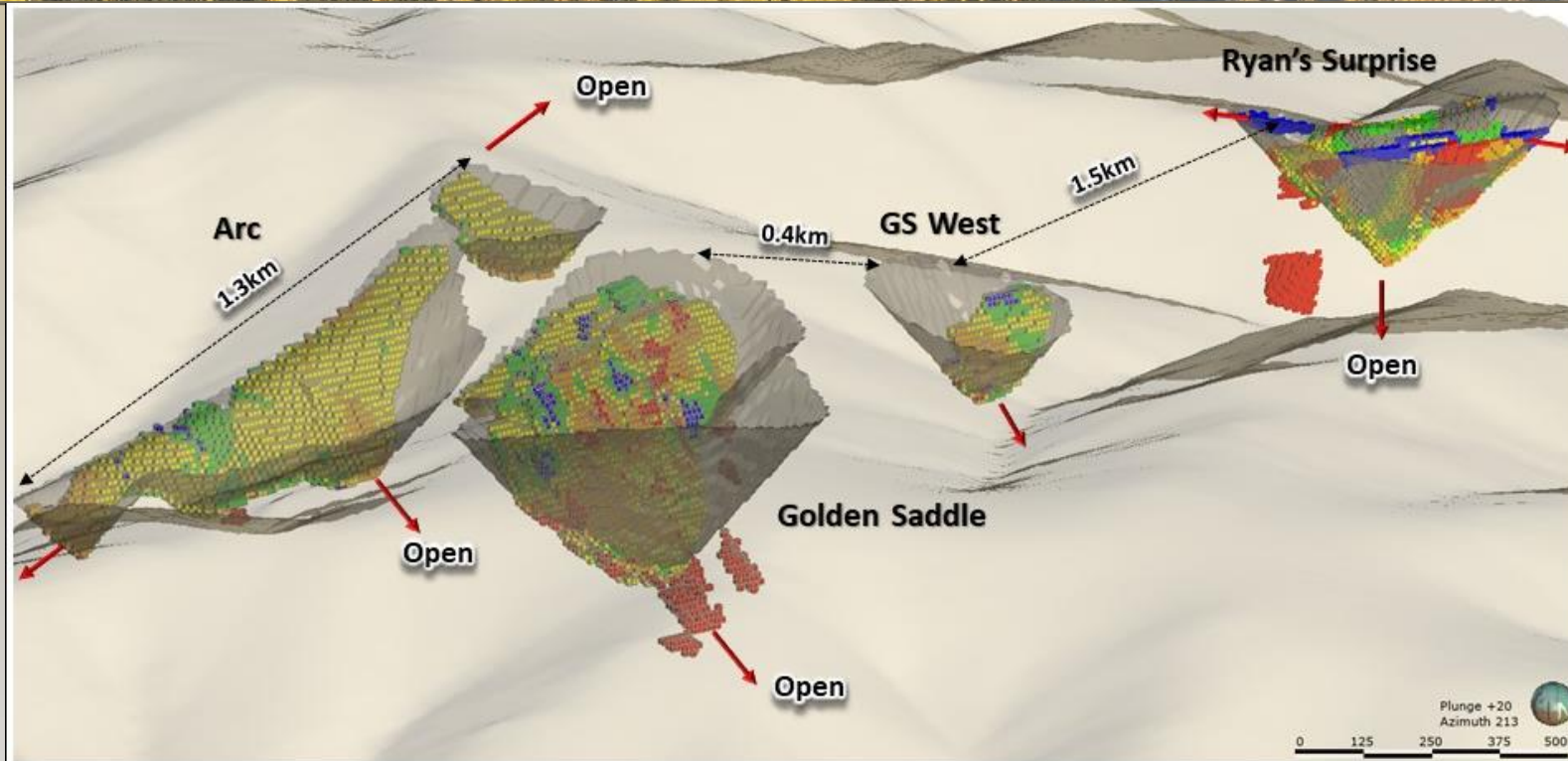


White Gold Project 2023 MRE (ASC April 15, 2023)

Deposit	Indicated Resource			Inferred Resource		
	Tonnage (000's)	Grade (g/t)	Contained Gold (ounces)	Tonnage (000's)	Grade (g/t)	Contained Gold (ounces)
GS - Open Pit	15,241	2.25	1,103,900	3,569	1.39	159,700
GS - Underground	224	3.86	27,800	535	3.68	63,200
Arc – Open Pit	642	1.03	21,200	5,426	1.15	201,000
Arc - Underground	--	--	--	36	3.23	3,700
RS – Open Pit	--	--	--	3,373	1.89	205,300
RS - Underground	--	--	--	214	3.25	22,400
VG – Open Pit	--	--	--	5,836	1.53	287,100
TOTAL	16,107	2.23	1,152,900	18,989	1.54	942,400



WHITE GOLD PROJECT – DEPOSITS



Legend

- 2023 Pit shell
- Topography
- Gold Estimated and Resource Constrained Blocks

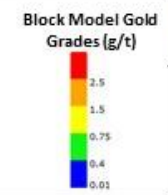
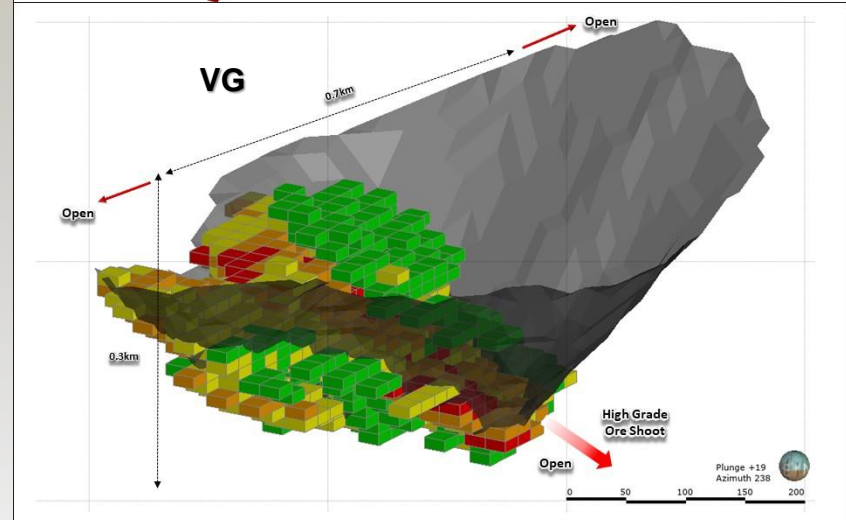
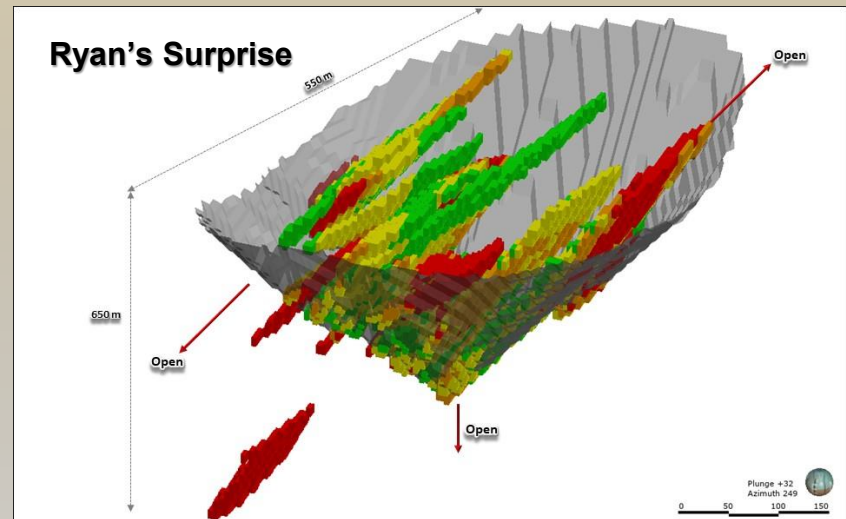
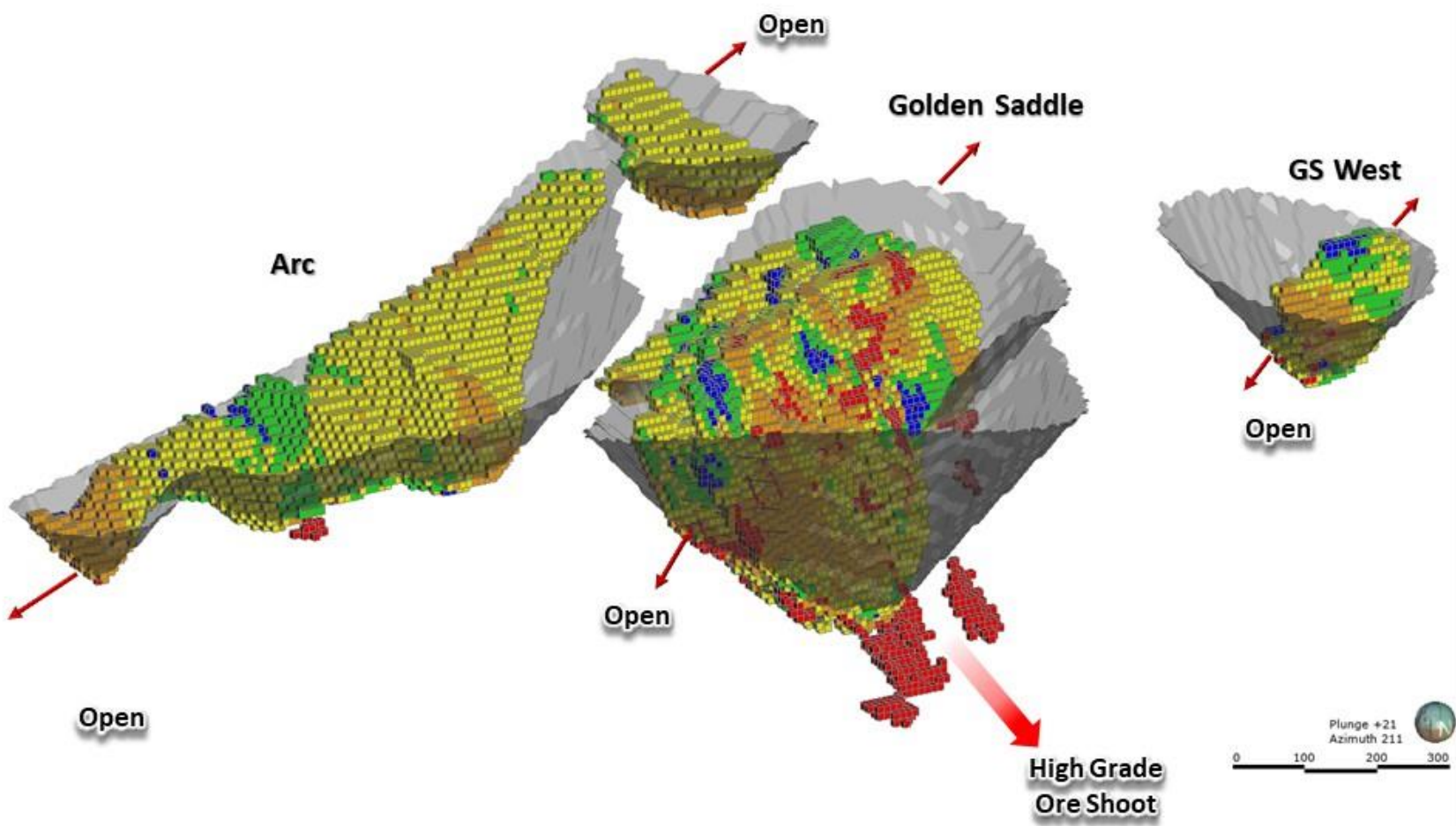


Figure 2: White Gold Property
Arc, Golden Saddle, Ryan's Surprise Deposits
(looking SSW)

WHITE GOLD PROJECT – DEPOSITS



2023 EXPLORATION PROGRAM



BETTY PROPERTY

Diamond Drilling – Betty Ford (1165m)
Extension drilling following up on 3.46 g/t Au over 50m in 2021
& 8.96 g/t Au over 18.29m in 2022

JP ROSS PROPERTY

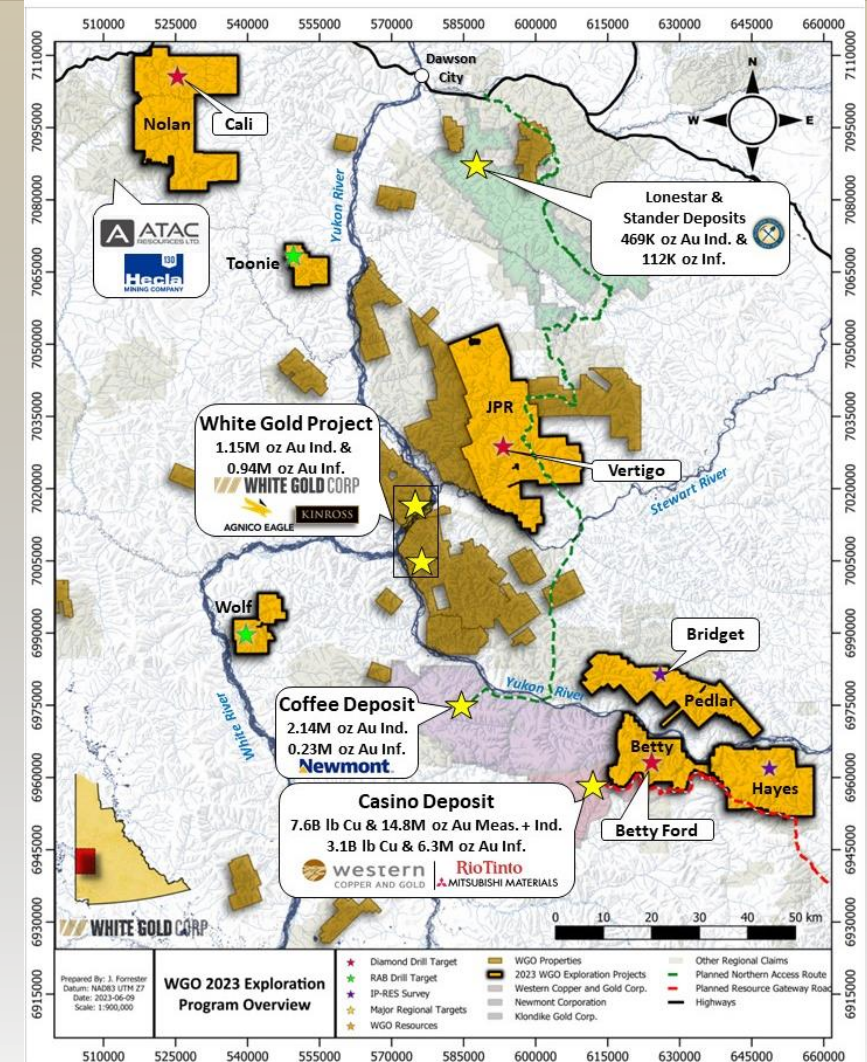
Diamond Drilling – Vertigo Target (1022m)
New structural interpretation includes multiple untested mineralized vein sets

Nolan Property

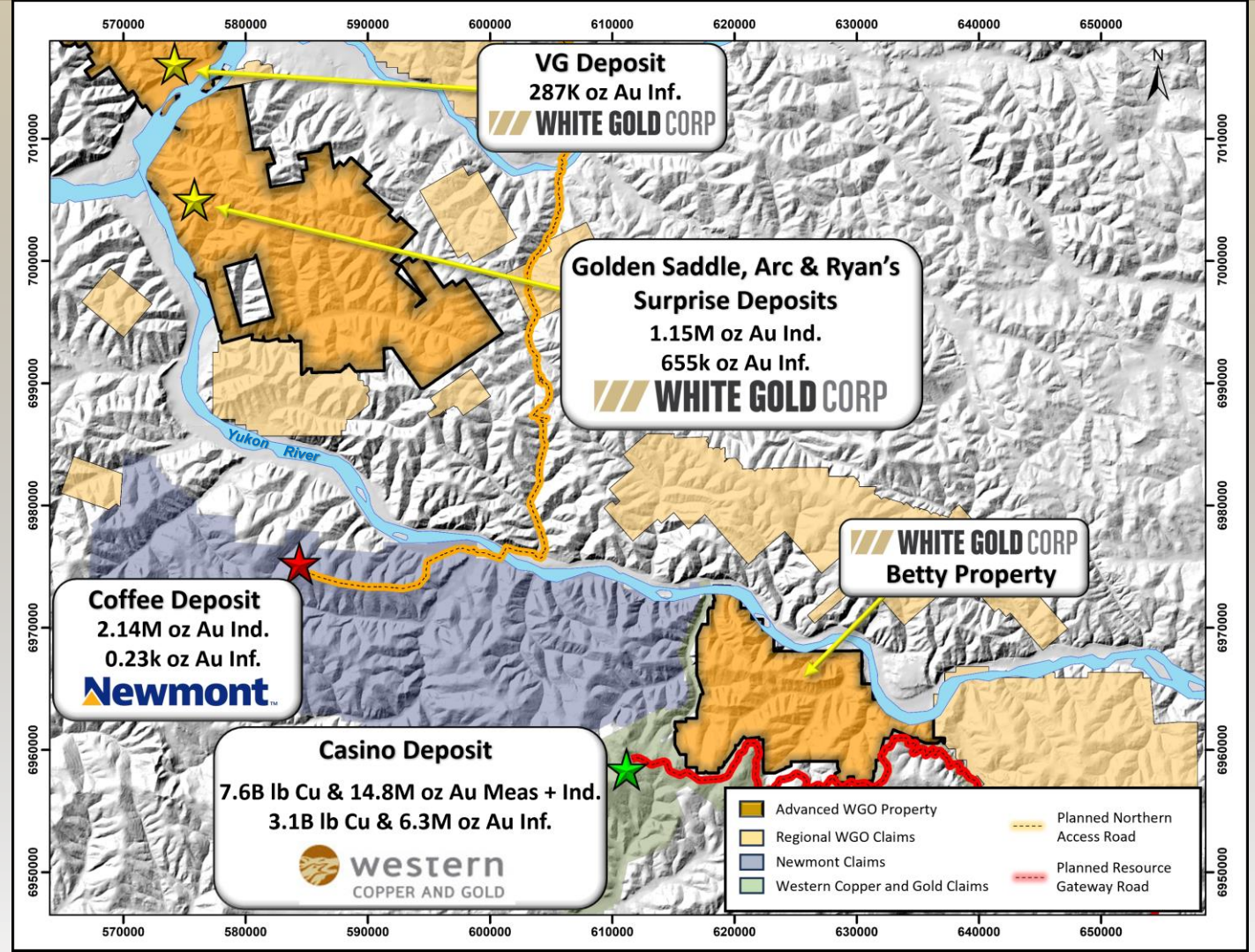
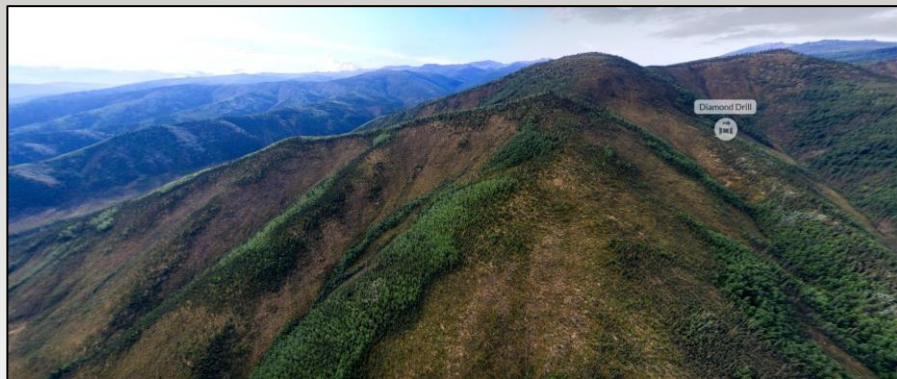
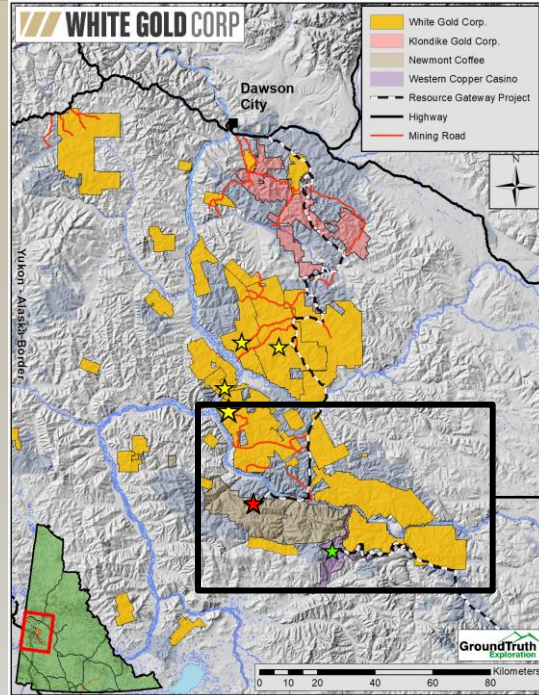
Maiden Diamond Drilling – Cali Target (972m)
2km geochemical anomaly along Sixty Mile Pika Fault in rich historic placer camp

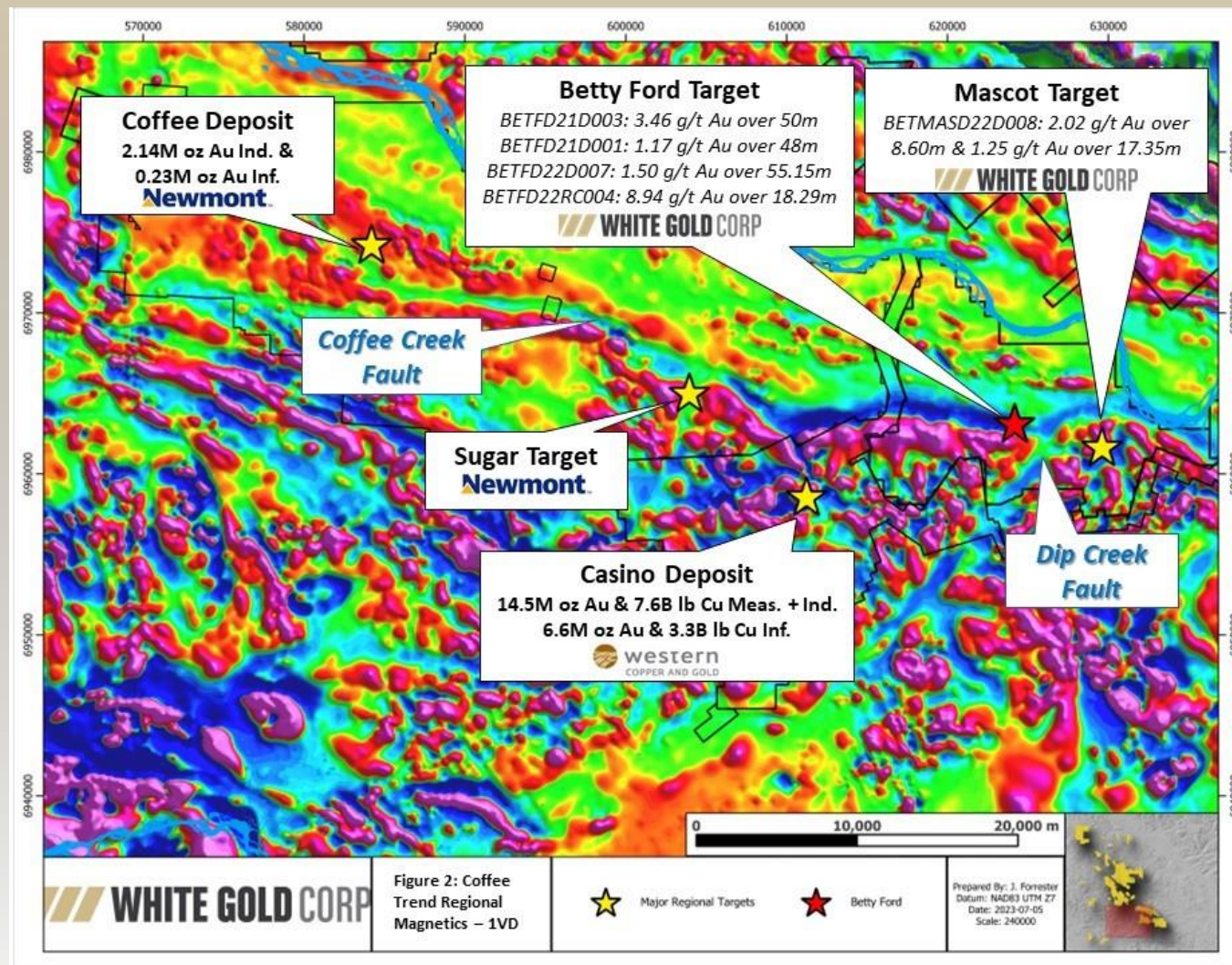
REGIONAL PROGRAM

RAB Drilling at Toonie & Wolf (800m), Soil Sampling, and IP-Resistivity Surveys

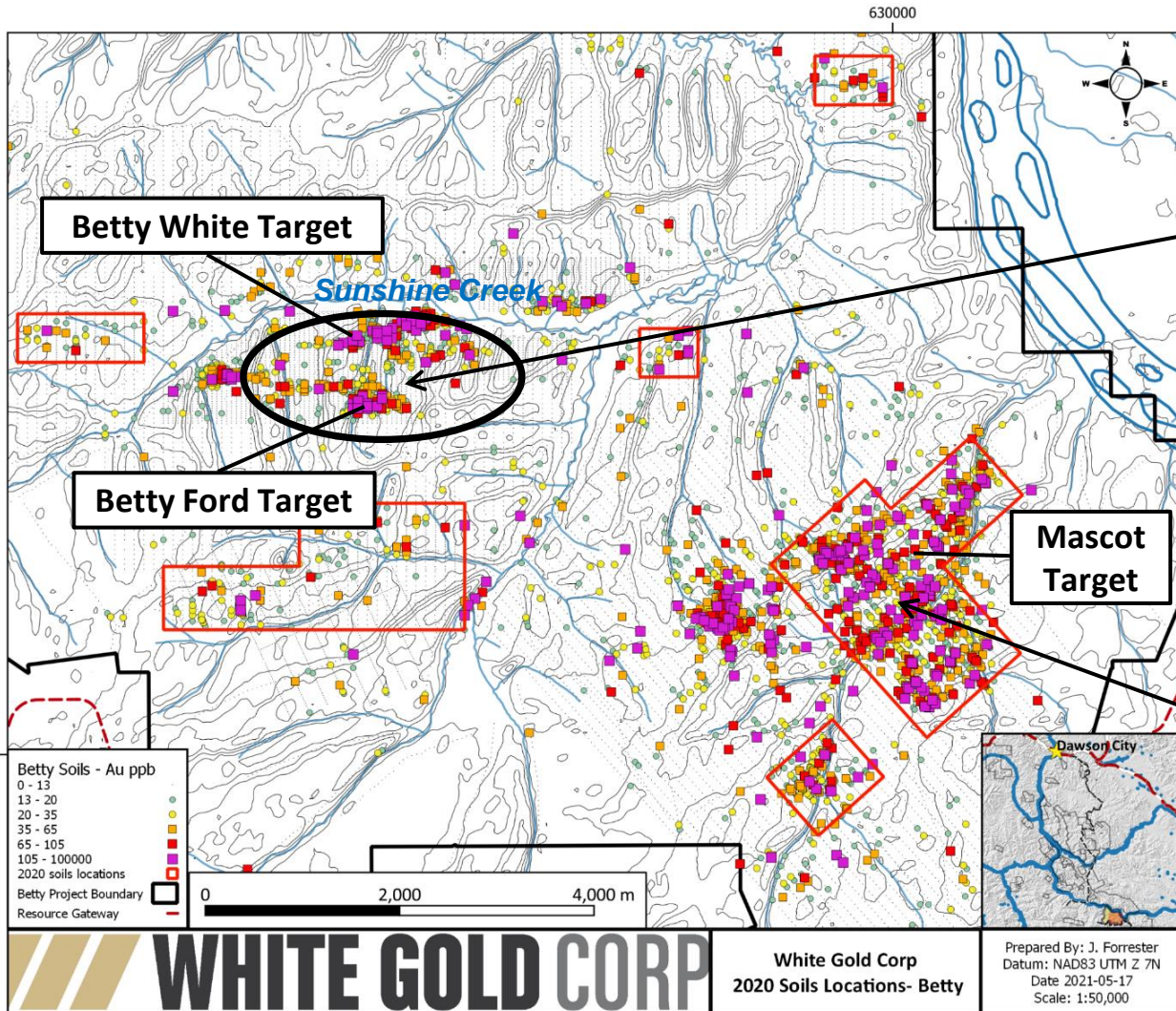


BETTY PROPERTY





BETTY PROPERTY HISTORICAL



White Gold Corp. – 2018 RAB Drilling Highlights:

Zone	Hole ID	From (m)	To (m)	Length* (m)	Gold (g/t)
Betty Ford	BETFRDRAB18-001	19.81	44.20	24.39	0.94
	incl.	27.43	36.58	9.15	1.72
Betty Ford	BETFRDRAB18-002	4.57	54.86	50.29	1.08
	incl.	19.81	28.96	9.15	2.24
Betty Ford	BETFRDRAB18-003	0.00	13.72	13.72	0.75
	incl.	0.00	4.57	4.57	1.23

*All drill hole intercepts reported are core lengths. Currently there is insufficient data to estimate true thicknesses

Ethos Gold Corp. – 2012 RC Drilling Highlights:

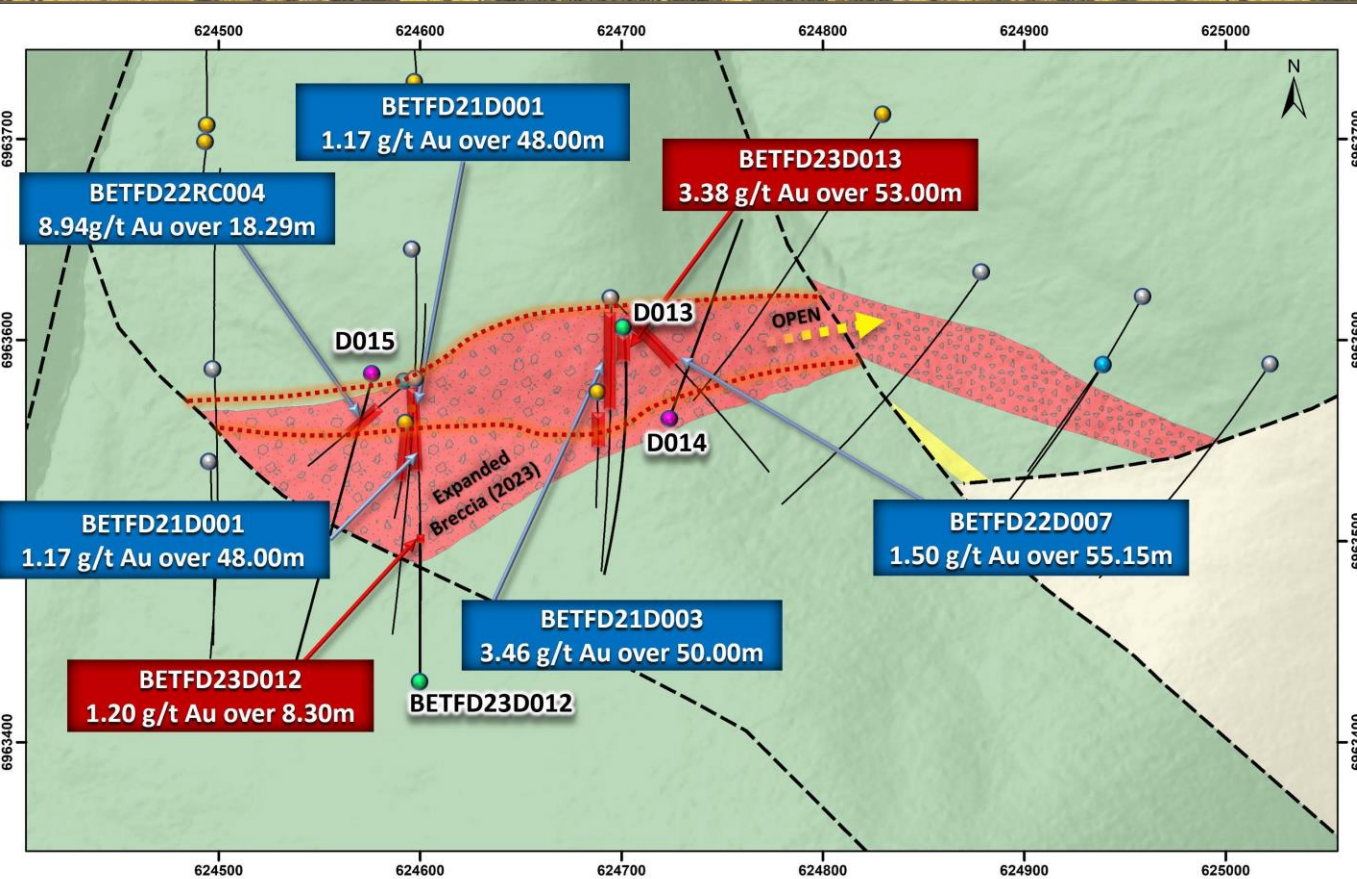
Zone	Hole ID	From (m)	To (m)	Length* (m)	Gold (g/t)
Page	BETR12-022	16.80	57.90	41.10	2.62
	incl.	27.40	38.10	10.70	8.68
Boop	BETR12-012	27.10	30.20	3.10	29.75
Boop	BETR12-014	109.70	120.40	10.70	2.19
	incl.	109.70	112.80	3.10	6.05
Davis	BETR12-007	55.50	76.80	21.30	1.48
	incl.	70.70	76.80	6.10	2.89

*All drill hole intercepts reported are core lengths. Currently there is insufficient data to estimate true thicknesses

White Gold Corp
2020 Soils Locations- Betty

Prepared By: J. Forrester
Datum: NAD83 UTM Z 7N
Date 2021-05-17
Scale: 1:50,000

BETTY FORD TARGET



Hole ID	From (m)	To (m)	Length (m)	Gold (g/t)
BETFD21D001	19.00	67.00	48.00	1.17
Inc.	23.00	50.00	27.00	1.54
BETFD21D003	33.00	83.00	50.00	3.46
Inc.	44.00	74.00	30.00	4.47
Inc.	44.00	63.00	19.00	5.25
BETFD22D007	22.85	78.00	55.15	1.50
Inc.	44.00	49.00	5.00	4.29
Inc.	61.00	67.00	6.00	2.67
BETFD22RC004	35.05	53.34	18.29	8.94
Inc.	45.72	51.82	6.10	21.73
BETFD23D012	166.70	175.00	8.30	1.20
BETFD23D013**	7.30	60.30	53.00	3.38
Inc.	18.00	24.30	6.30	7.19
Inc.	38.80	43.15	4.35	8.00

*All drill hole intercepts reported are core lengths. Currently there is insufficient data to estimate true thicknesses

**Assays outstanding for BETFD23D013 364 m to 503 m

***Assays outstanding for BETFD23D014 & BETFD23D015

Legend

- 2023 Diamond Drill Hole Assay Results Received
- 2023 Diamond Drill Hole Assay Results Pending
- Pre-2023 Diamond Drill Hole
- RC Drill Hole
- RAB Hole
- Gold Intersections >0.5 g/t Au

Lithology Legend

- Felsic Porphyry Dyke
- Matrix Supported Polyolithic Breccia
- Clast Supported Polyolithic Breccia
- Mixed Biotite Quartz Feldspar Gneiss and Banded Quartzite
- Augen Gneiss

--- Fault (Inferred)

--- Previous Interpreted Breccia Outline

WHITE GOLD CORP

Betty Ford
2023 Drilling Highlights

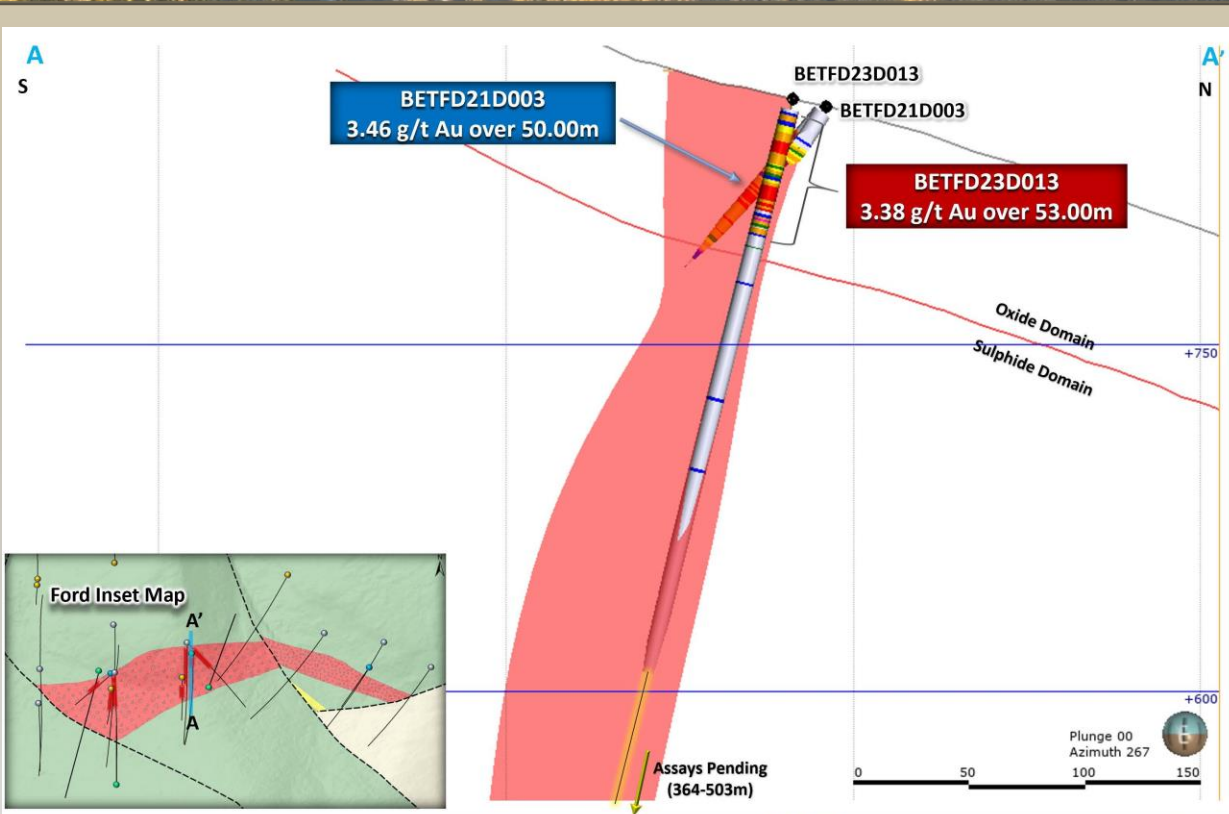
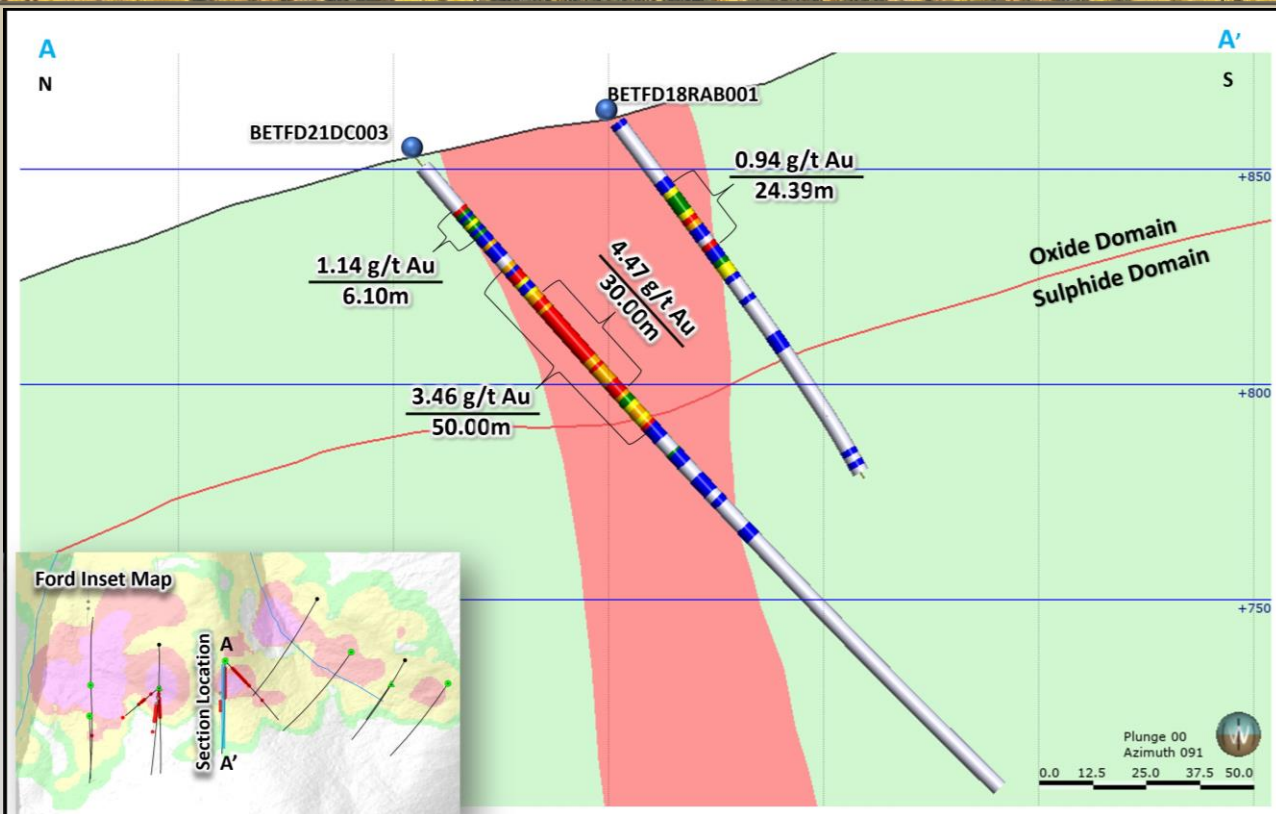
Scale: 0 50 100 Meters

Projection: NAD 83 Zone 7N

Date: 04/06/2023

Figure 2

BETTY FORD TARGET CROSS SECTIONS



Legend

- Drill Hole
- Polyolithic Breccia
- Banded Quartzite +/- Schist

Au (g/t)

- >= 3.00
- 1.00-3.00
- 0.50-0.99
- 0.29-0.49
- 0.10-0.29
- <0.1

WHITE GOLD CORP

Betty Ford
Geological Cross Section: BETFD21D003

Scale: 0 50 Metres
Date: December 2022

Legend

- Drill Hole
- Polyolithic Breccia

Au (ppm)

- 10
- 5
- 1
- 0.5
- 0.3
- 0.1

WHITE GOLD CORP

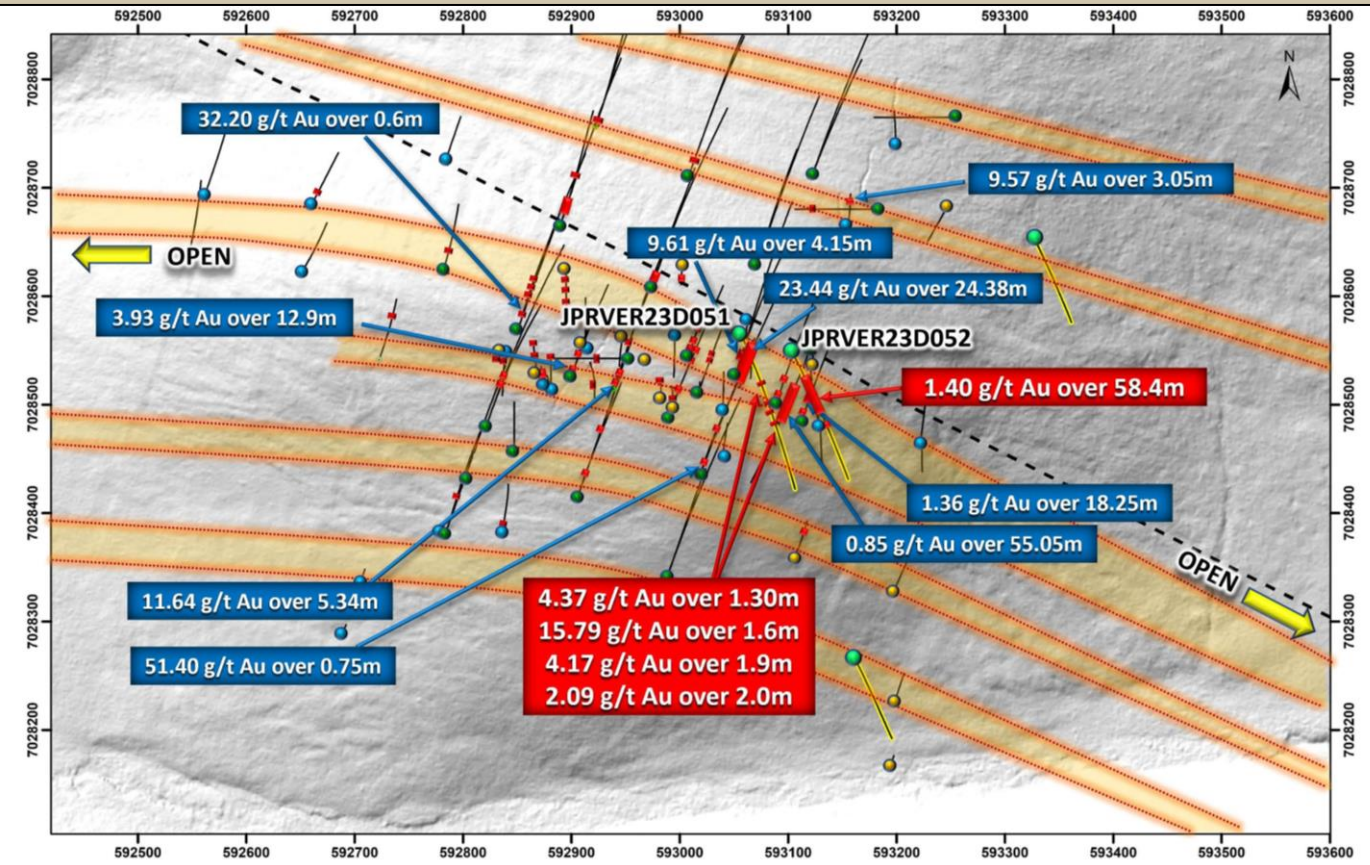
Betty Ford
Geological Cross Section: BETFD23D013

Scale: 0 50 Metres
Date: 04/09/2023
Figure 3

BETTY FORD TARGET 21D003 CORE



JP ROSS PROPERTY – VERTIGO



WHITE GOLD CORP

Vertigo
Surface Drill Plan Map

Scale: 0 50 100 200 Metres

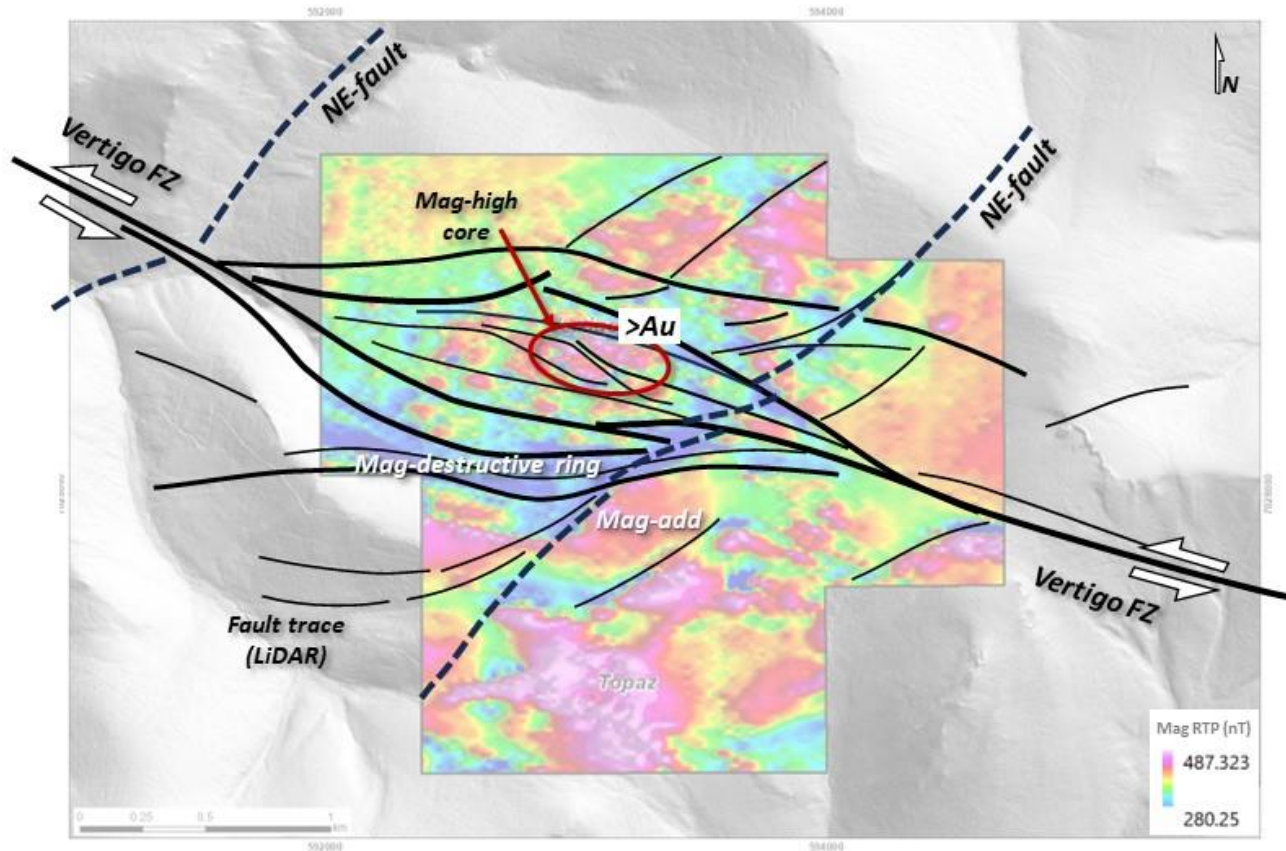
Projection: NAD 83 Zone 7N
Date: 04/09/2023

Figure 4

Table 1. Highlights of 2018-2019 Vertigo Drilling Assay Results, White Gold Corp.

Highlights of 2018-2019 Vertigo Drilling Assay Results						
Hole ID	Type	From (m)	To (m)	Length (m)*	Au (g/t)**	Ag (g/t)**
JPRVERRAB18-001	RAB	1.52	16.76	15.24	12.25	10.25
<i>incl.</i>	RAB	3.05	6.10	3.05	56.25	38.80
JPRVERRAB18-011	RAB	0.00	18.29	18.29	8.11	7.13
<i>incl.</i>	RAB	1.52	4.57	3.05	45.00	33.35
JPRVERRAB18-014	RAB	0.00	24.38	24.38	23.44	144.75
	RAB	65.53	73.15	7.62	3.98	14.80
JPRVERRC18-006	RC	0.00	22.86	22.86	9.46	36.68
<i>incl.</i>	RC	0.00	4.57	4.57	40.58	157.23
JPRVERRC18-009	RC	0.00	6.10	6.10	14.23	26.58
JPRVERRC18-013	RC	24.38	30.48	6.10	18.59	188.75
JPRVERRC18-016	RC	54.86	64.01	9.14	9.20	14.68
<i>incl.</i>	RC	54.86	59.44	4.57	17.20	27.33
JPRVER19D0005	DDH - Core	20.00	24.15	4.15	9.61	32.67
	DDH - Core	104.50	106.25	1.75	20.15	30.27
JPRVER19D0007	DDH - Core	14.85	15.60	0.75	51.40	148.00
JPRVER19D0015	DDH - Core	3.00	8.34	5.34	11.64	31.68
<i>incl.</i>	DDH - Core	6.20	6.62	0.42	141.00	354.00
	DDH - Core	92.00	94.48	2.48	18.46	23.90
<i>incl.</i>	DDH - Core	92.00	93.07	1.07	39.70	46.70
JPRVER19D0016	DDH - Core	4.00	9.60	5.60	6.26	21.70
<i>incl.</i>	DDH - Core	8.60	9.60	1.00	32.50	106.00
JPRVER19D0049	DDH - Core	29.70	42.60	12.90	3.93	23.40
JPRVER19D0050	DDH - Core	49.20	104.25	55.05	0.85	4.89

New Structural Interpretation – M. Sanchez (Fault Rocks)

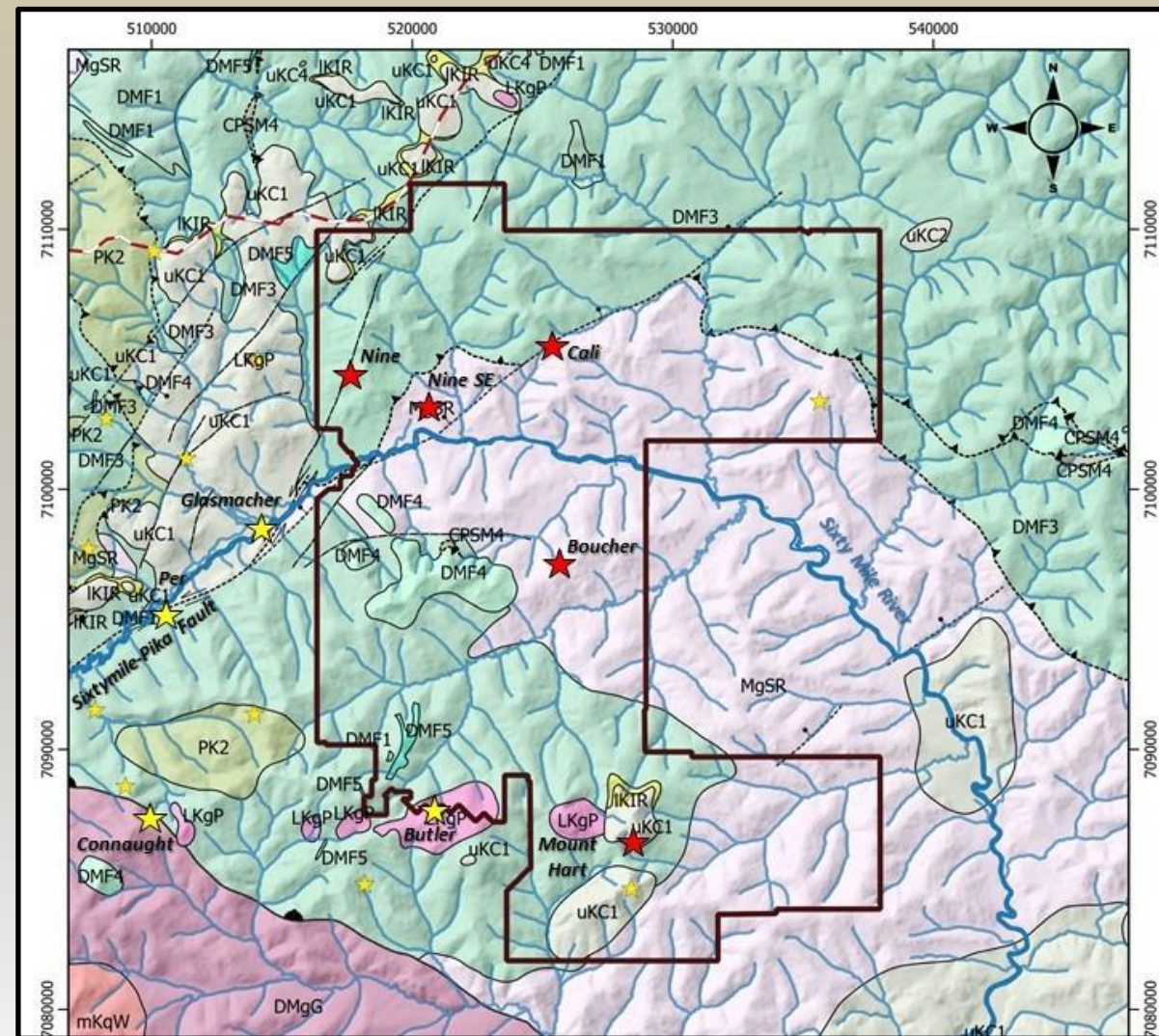
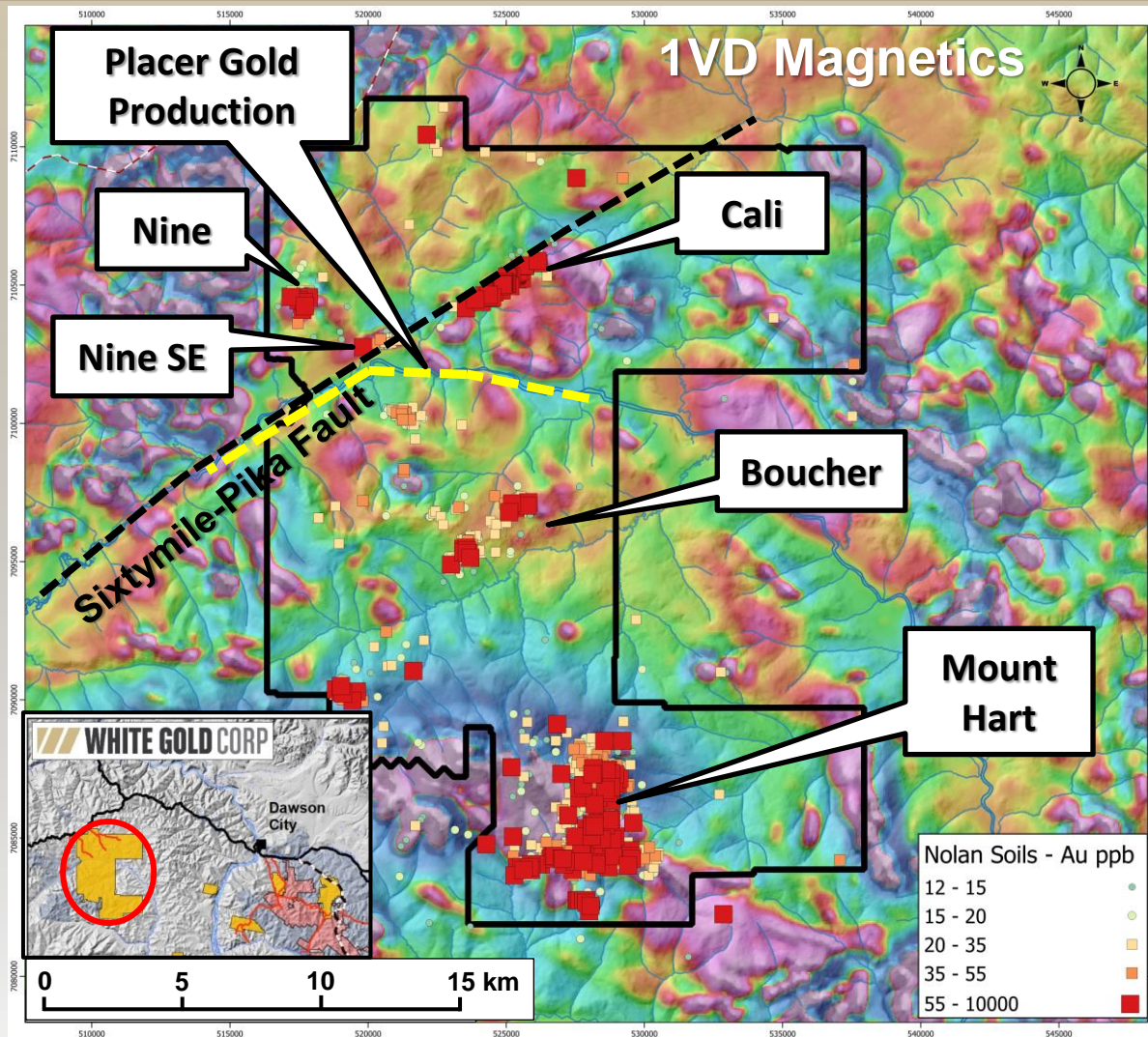


WNW-oriented sinistral pull-apart at orthogonal fault intersection

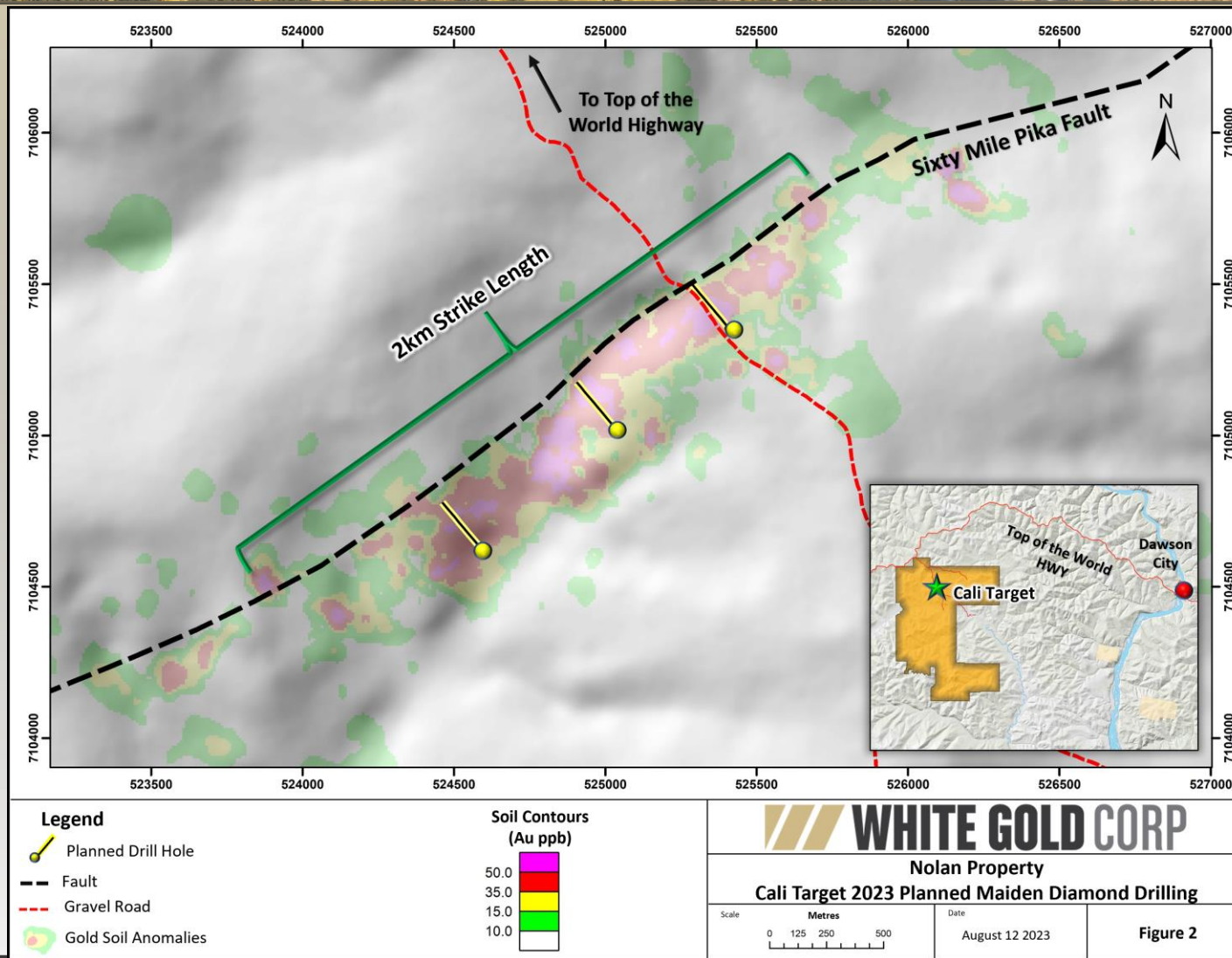
- Gold mineralization occurs within a ~2 by 0.8 km mag-destructive sinistral pull-apart between two NE-trending magnetic and topographic (LiDAR) lineaments.
- Principal gold anomaly is located at a mag-addition zone with steep-dipping quartz veins following WNW- and NE-trends.



NOLAN PROPERTY



NOLAN PROPERTY – CALI TARGET



HAYES PROPERTY SOILS

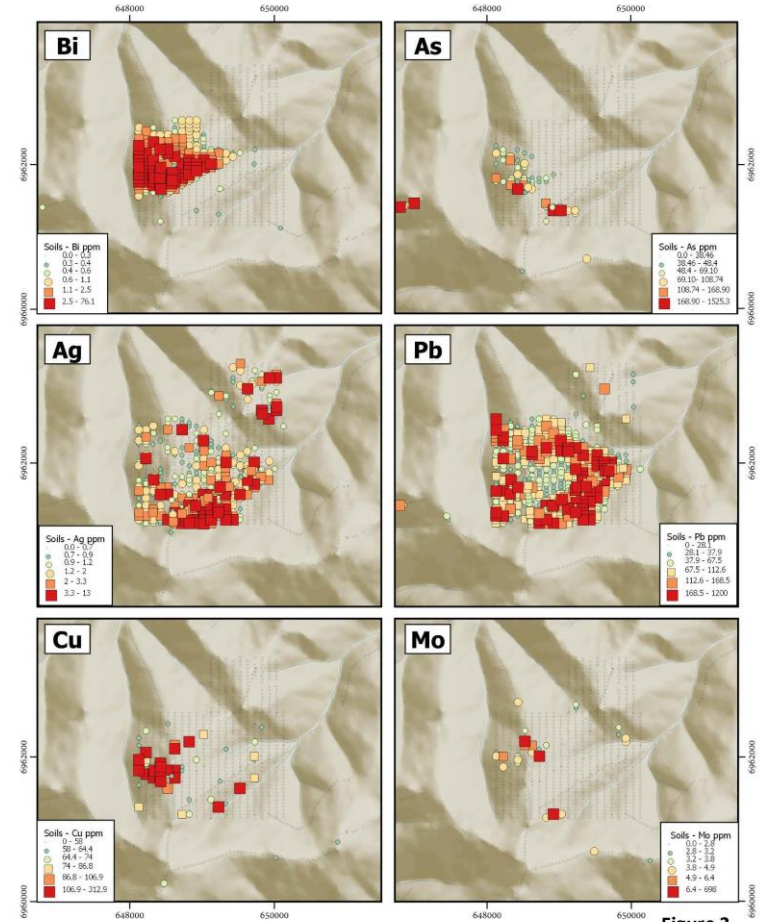
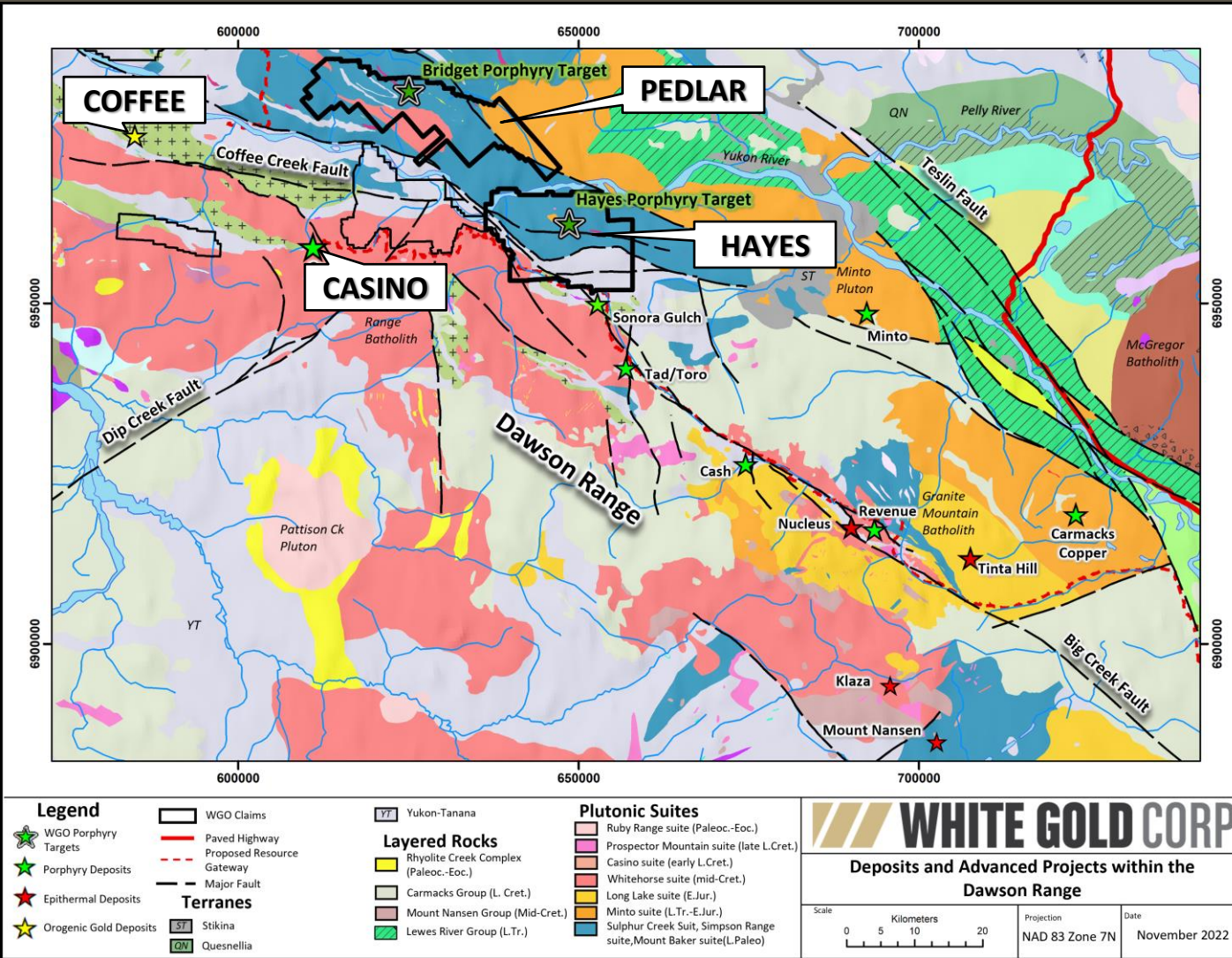
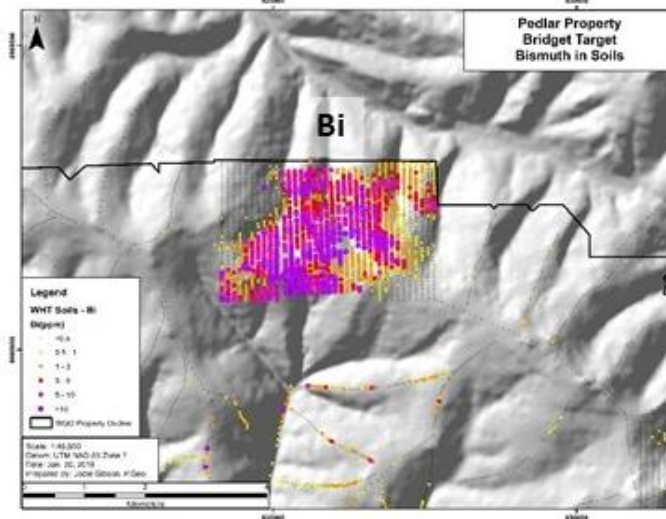
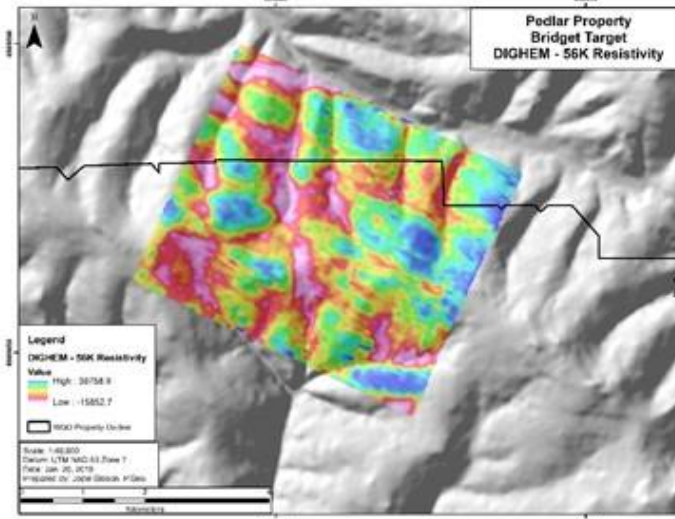
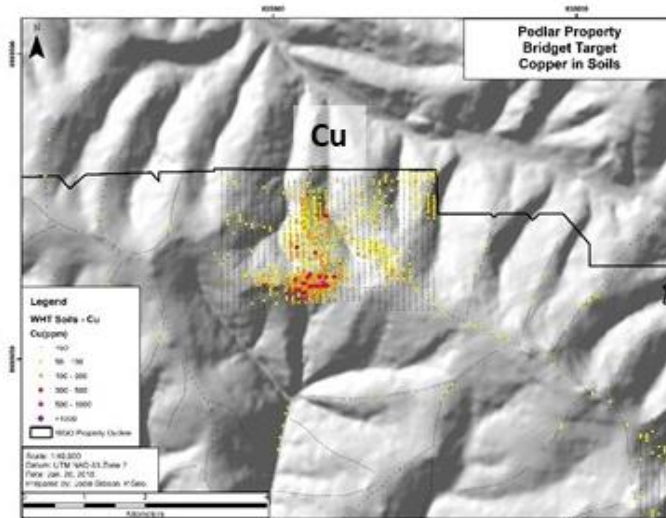
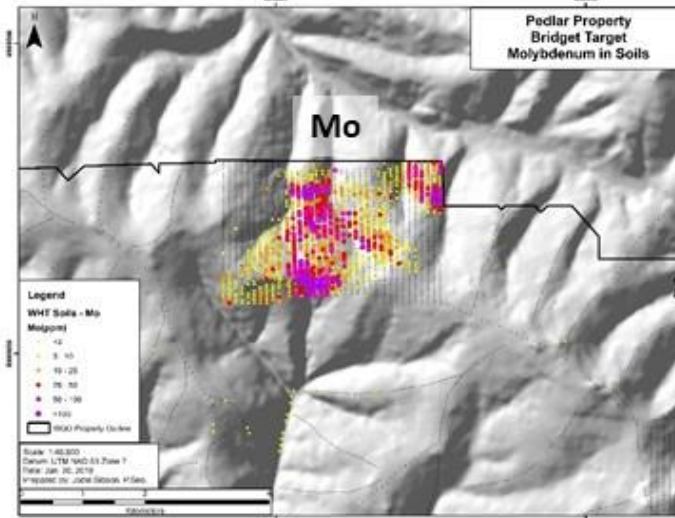


Figure 3
Hayes - 2021 Soils Results

Prepared By: J. Forester
 Datum: NAD83 UTM
 Date: 2022-03-26
 Scale: 1:50,000

PEDLAR PROPERTY SOILS

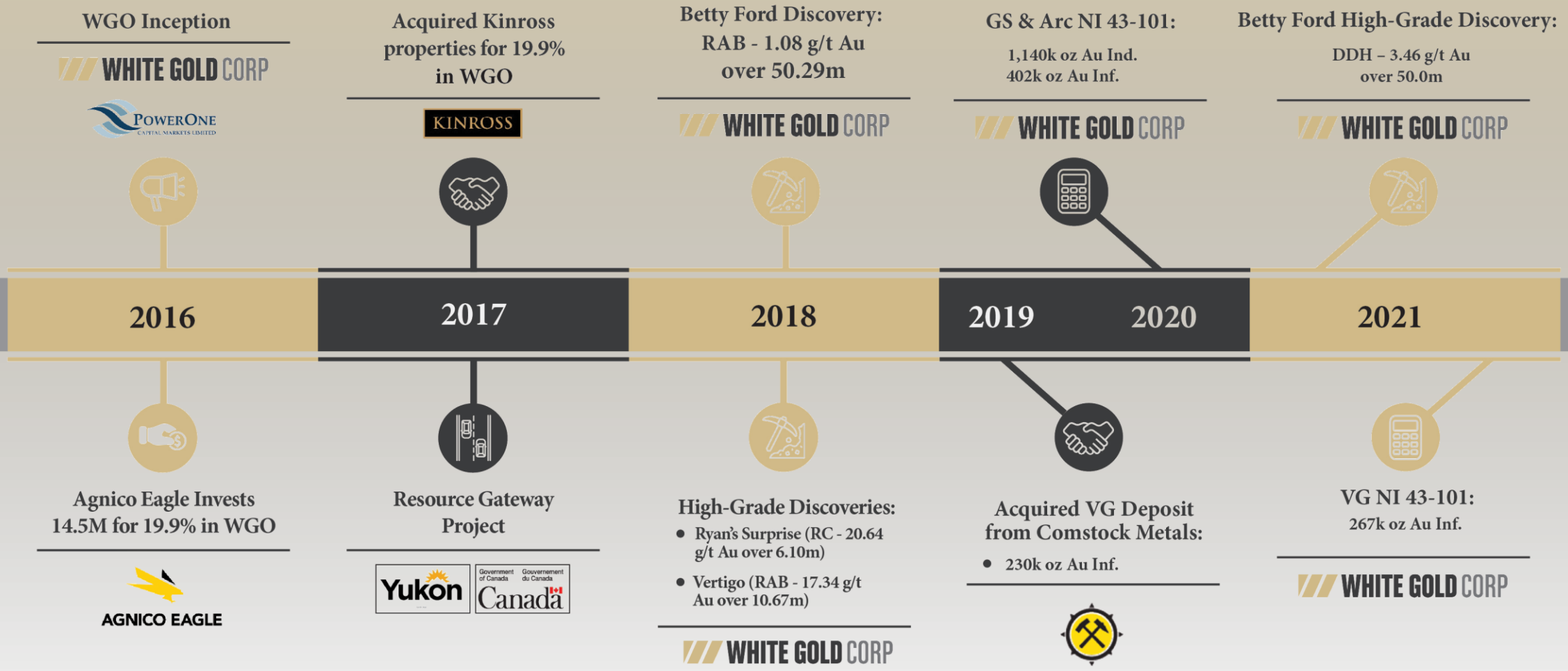




TSX-V: WGO | OTC: WHGOF | FRA: 29W

82 Richmond St E, Toronto, Ontario M5C 1P1
ir@whitegoldcorp.ca
(647) 930-1880

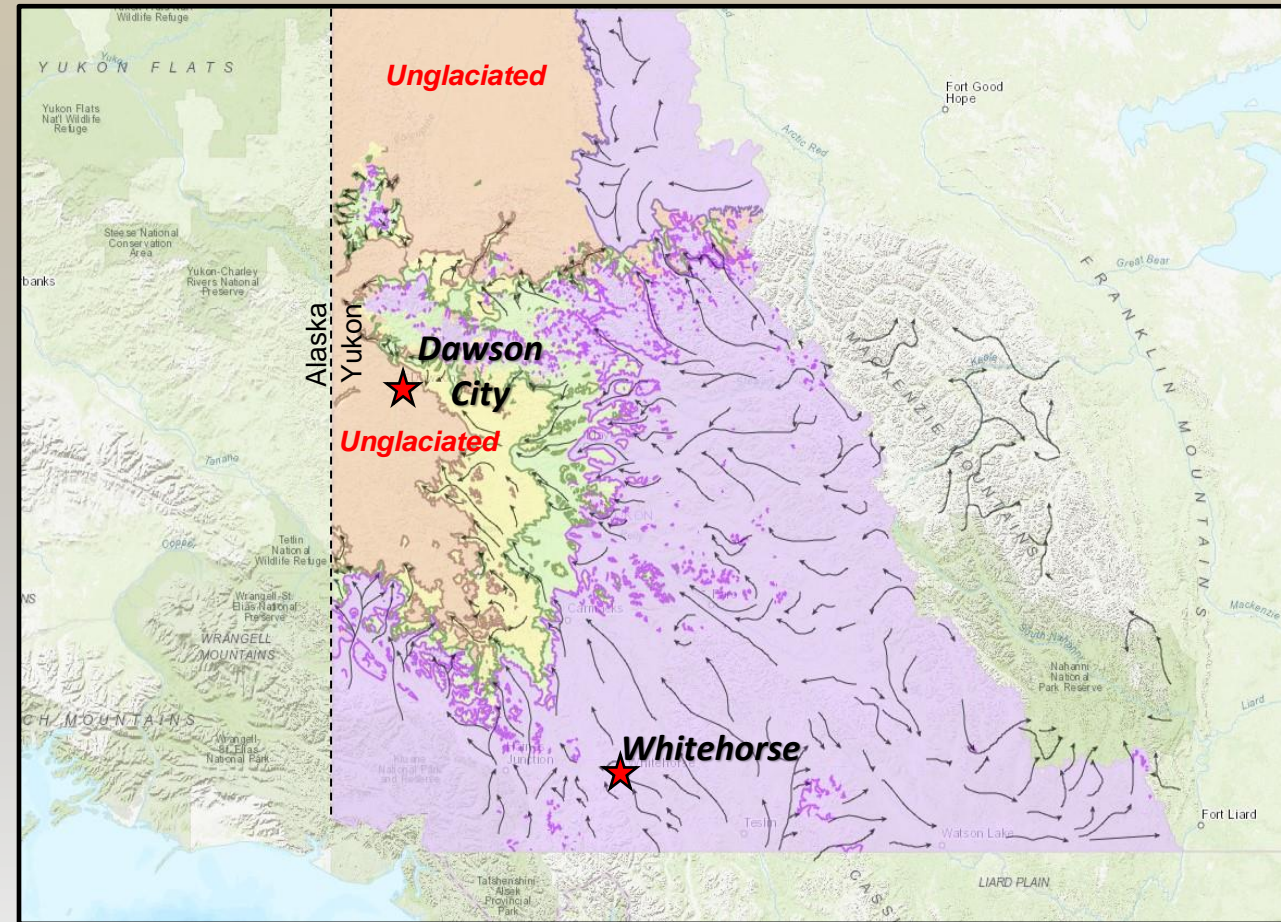
KEY EVENTS TIMELINE



EXPLORATION APPROACH – UNIQUE TERRAIN



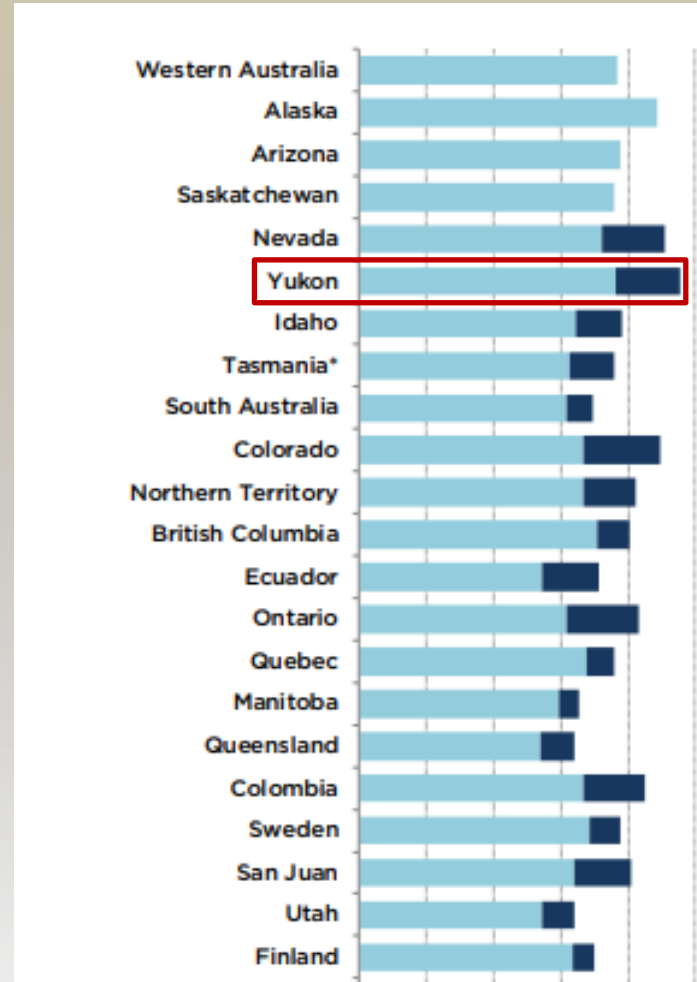
- While the rest of Canada was almost entirely covered by glacial ice during the last ice age, portions of the Yukon were ice-free – including the White Gold District
- Large ice-free region extended from central and northern Yukon across Alaska, and westward to northern Asia – forming a vast ice-free wilderness area where herds of grazing mammals and their predators (many now extinct) roamed
- An extensive thin (generally $\leq 2\text{-}3\text{m}$) veneer of overburden is characteristic, directly impacting exploration approach:
 - ❑ Strong initial focus on soil geochemistry surveys (400,000+ samples in company database) – finding the haystacks...
 - ❑ Successful utilization of GT Probe (soil-bedrock interface sampling) and low-cost Rotary Air Blast (RAB) drilling to better screen and define surface targets before diamond drilling
 - ❑ Conventional geological, geochemical and geophysical exploration techniques



Tier 1 Jurisdiction

Investment Attractiveness Index

Best Practices Mineral Potential Index



- Annual survey conducted by Fraser Institute ranks Yukon, Canada as a top jurisdiction in the Investment Attractiveness Index and the Best Practices Mineral Potential Index
- Yukon has been consistently ranked a top jurisdiction in the last 5 years in both the Investment Attractiveness and Mineral Potential categories
- Supportive government and First Nation groups, favourable mining exploration policies, strong infrastructure initiatives, and historically underexplored contribute to Yukon’s place as a tier 1 jurisdiction in the world

Source: Fraser Institute Annual Survey of Mining Companies 2021

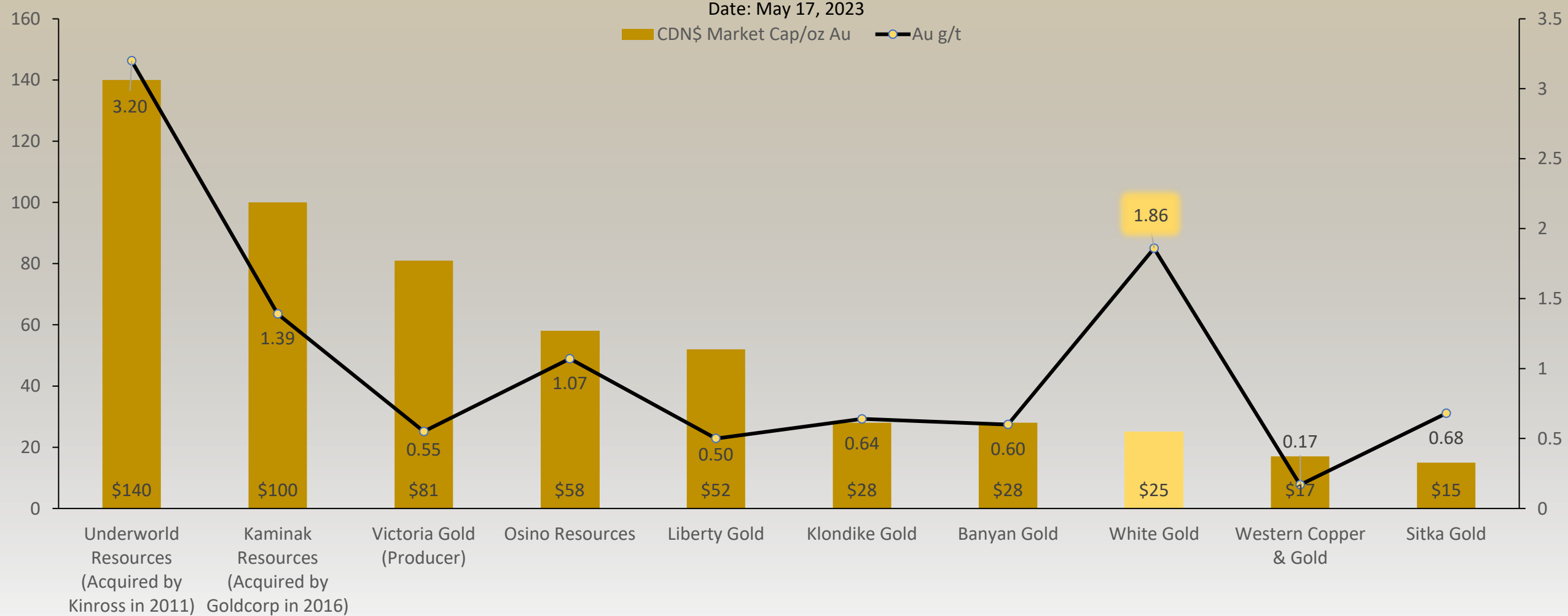
COMPARABLE ANALYSIS



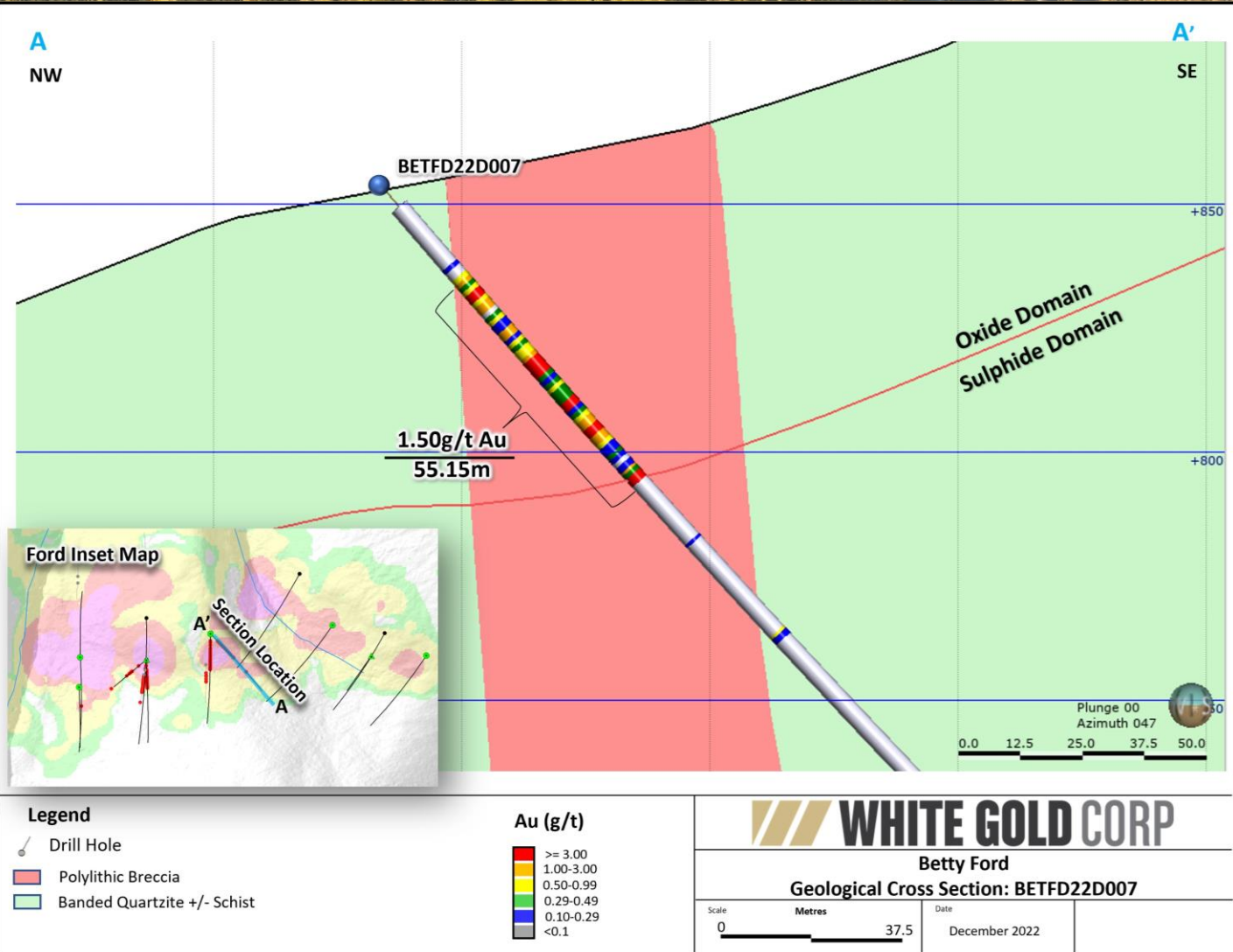
Market Capitalization / Resources (CDN\$ / oz Au)

Date: May 17, 2023

■ CDN\$ Market Cap/oz Au ●— Au g/t



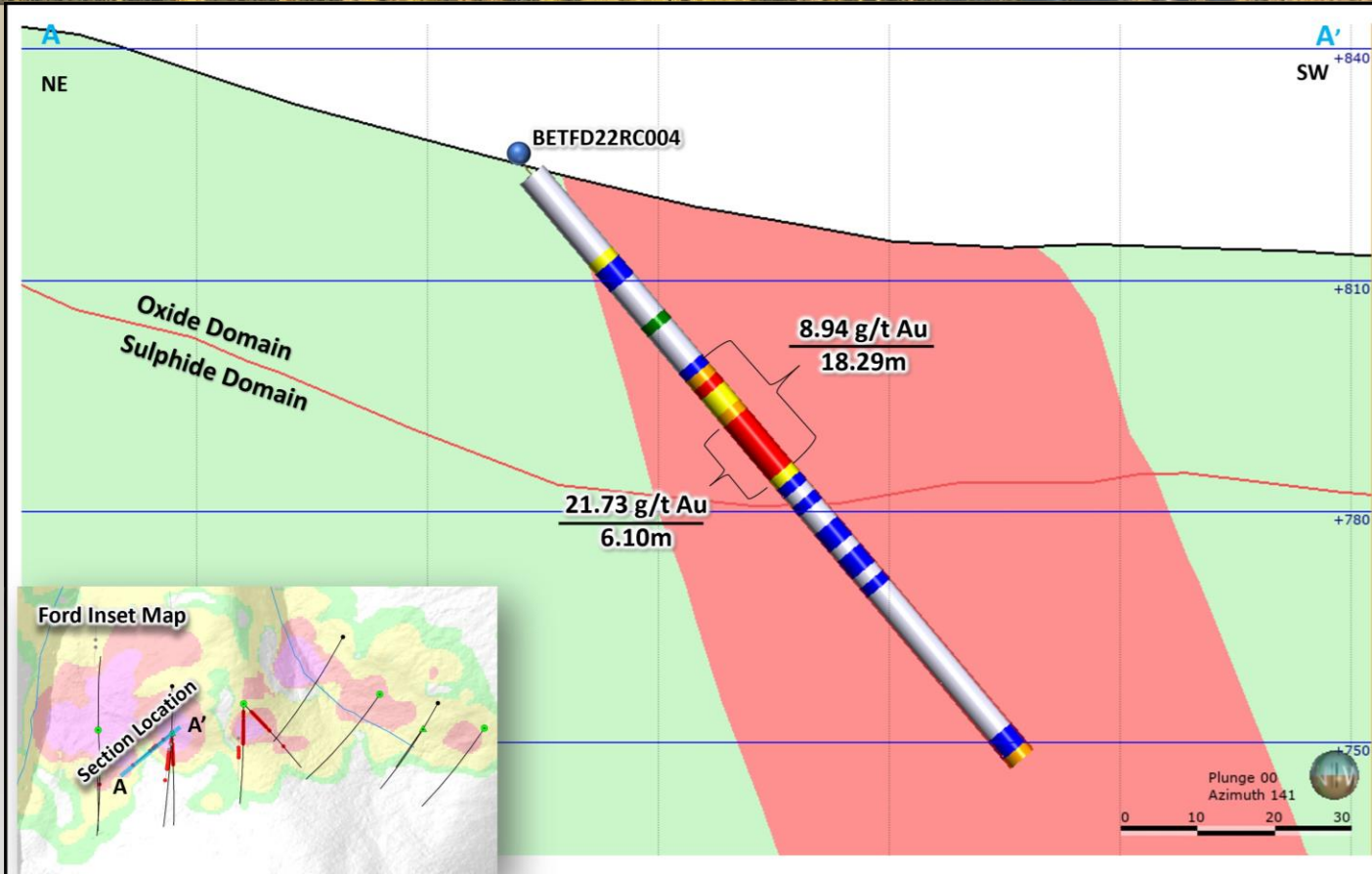
BETTY FORD TARGET CROSS SECTION



BETTY FORD TARGET 22D007 CORE



BETTY FORD TARGET CROSS SECTION



Legend

- Drill Hole
- Poly lithic Breccia
- Banded Quartzite +/- Schist

Au (g/t)

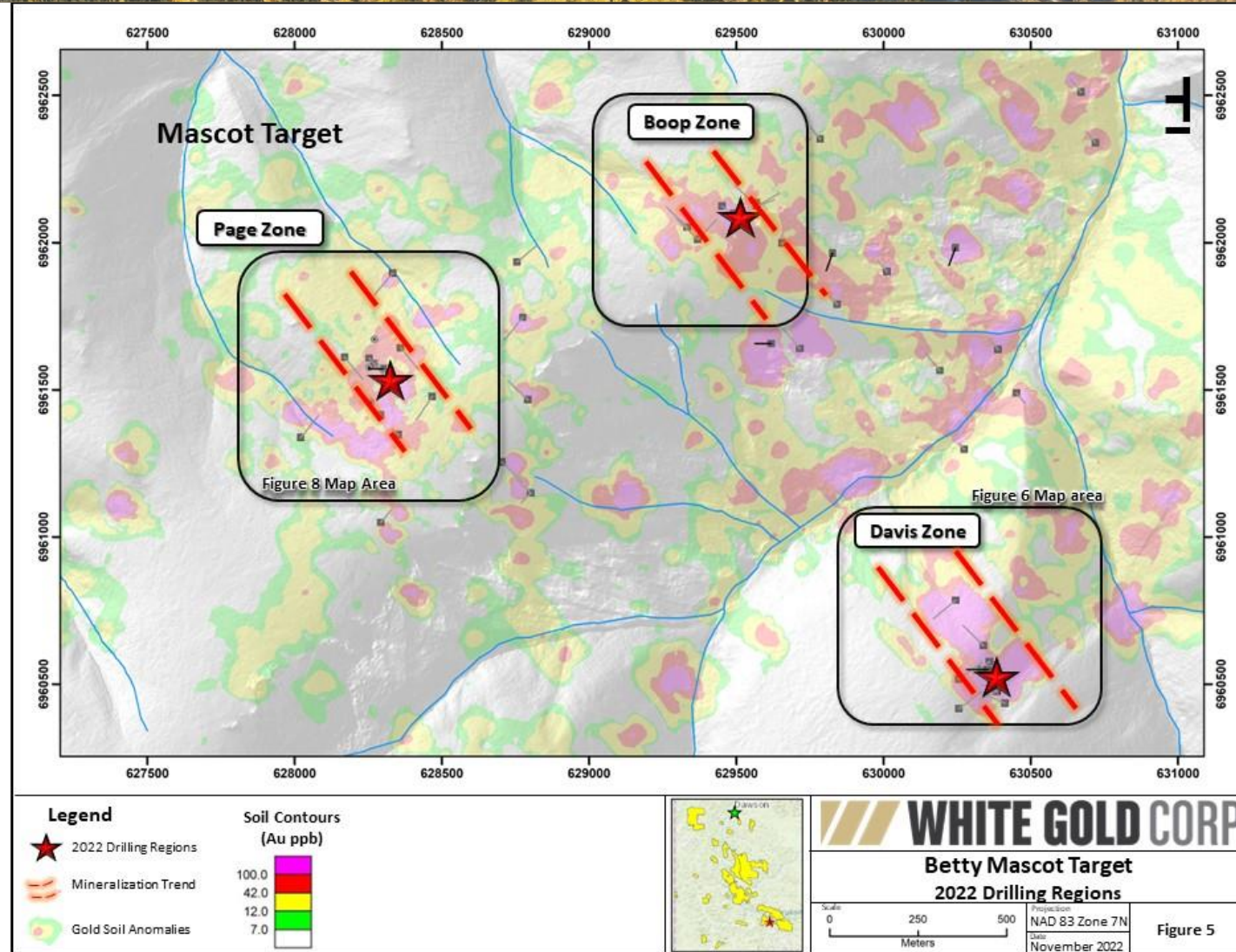
- >= 3.00
- 1.00-3.00
- 0.50-0.99
- 0.29-0.49
- 0.10-0.29
- <0.1

WHITE GOLD CORP

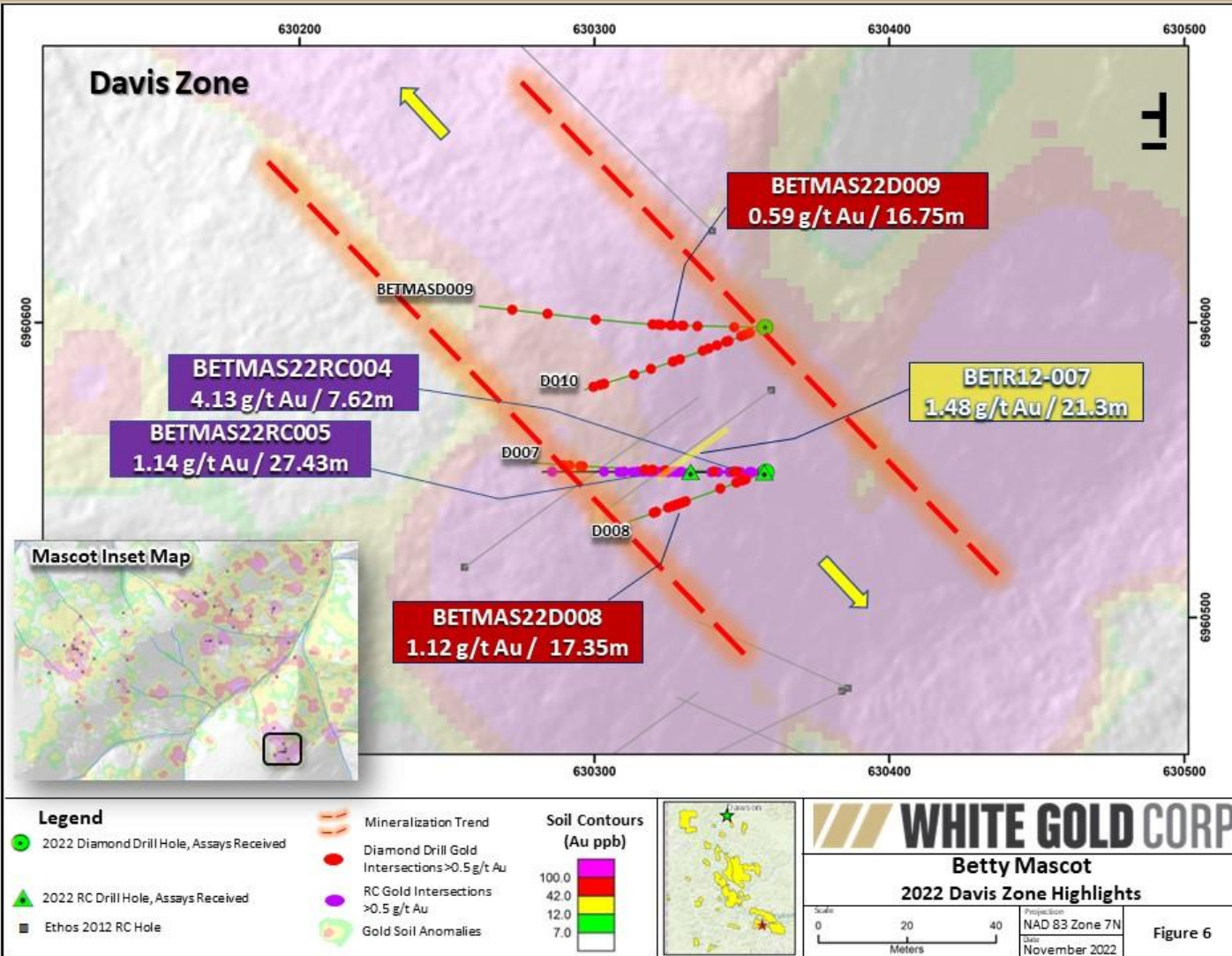
Betty Ford
Geological Cross Section: BETFD22RC004

Scale: 0 10 20 30 Metres
 Date: December 2022

BETTY MASCOT OVERVIEW



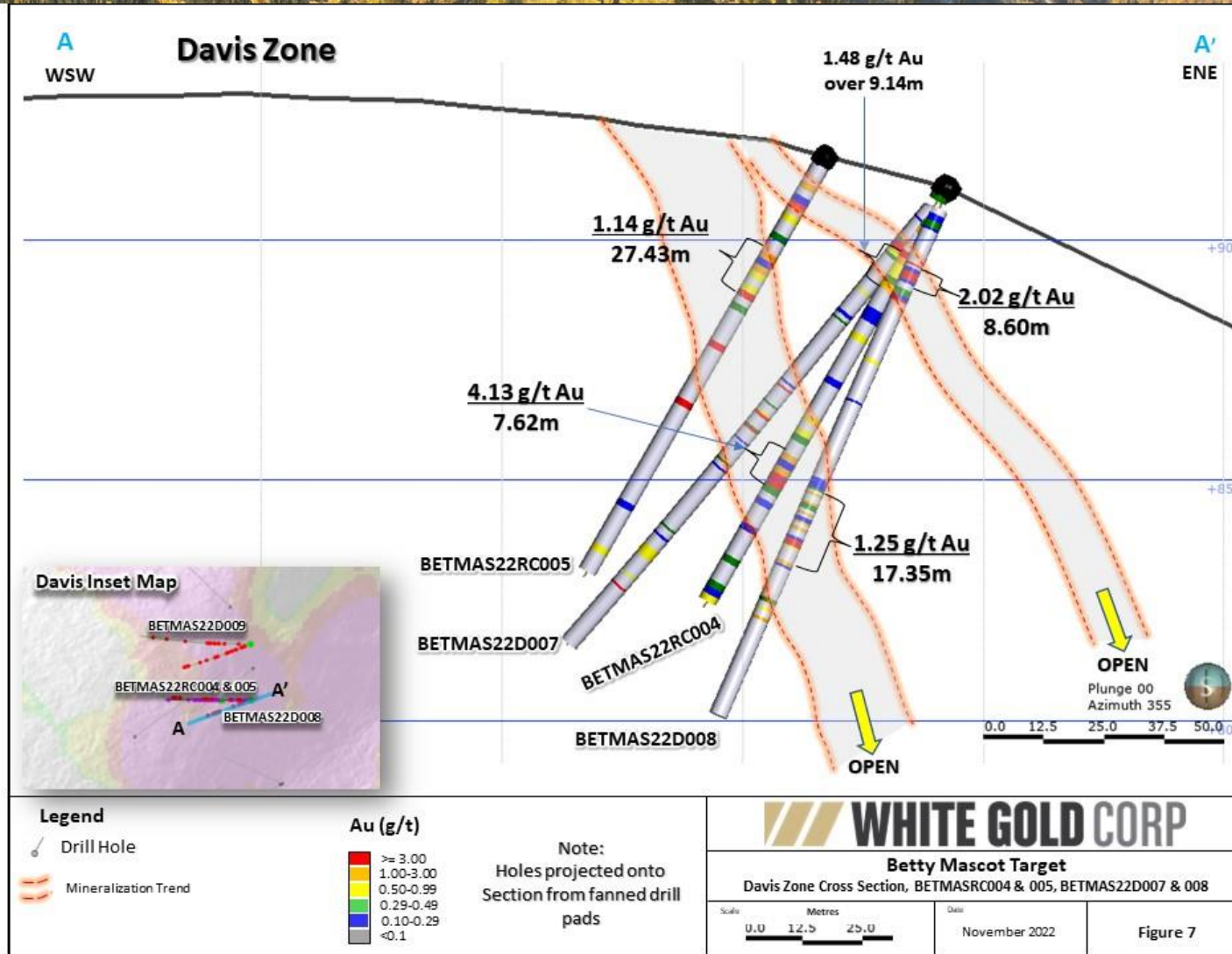
BETTY MASCOT – DAVIS ZONE 2022 DRILLING



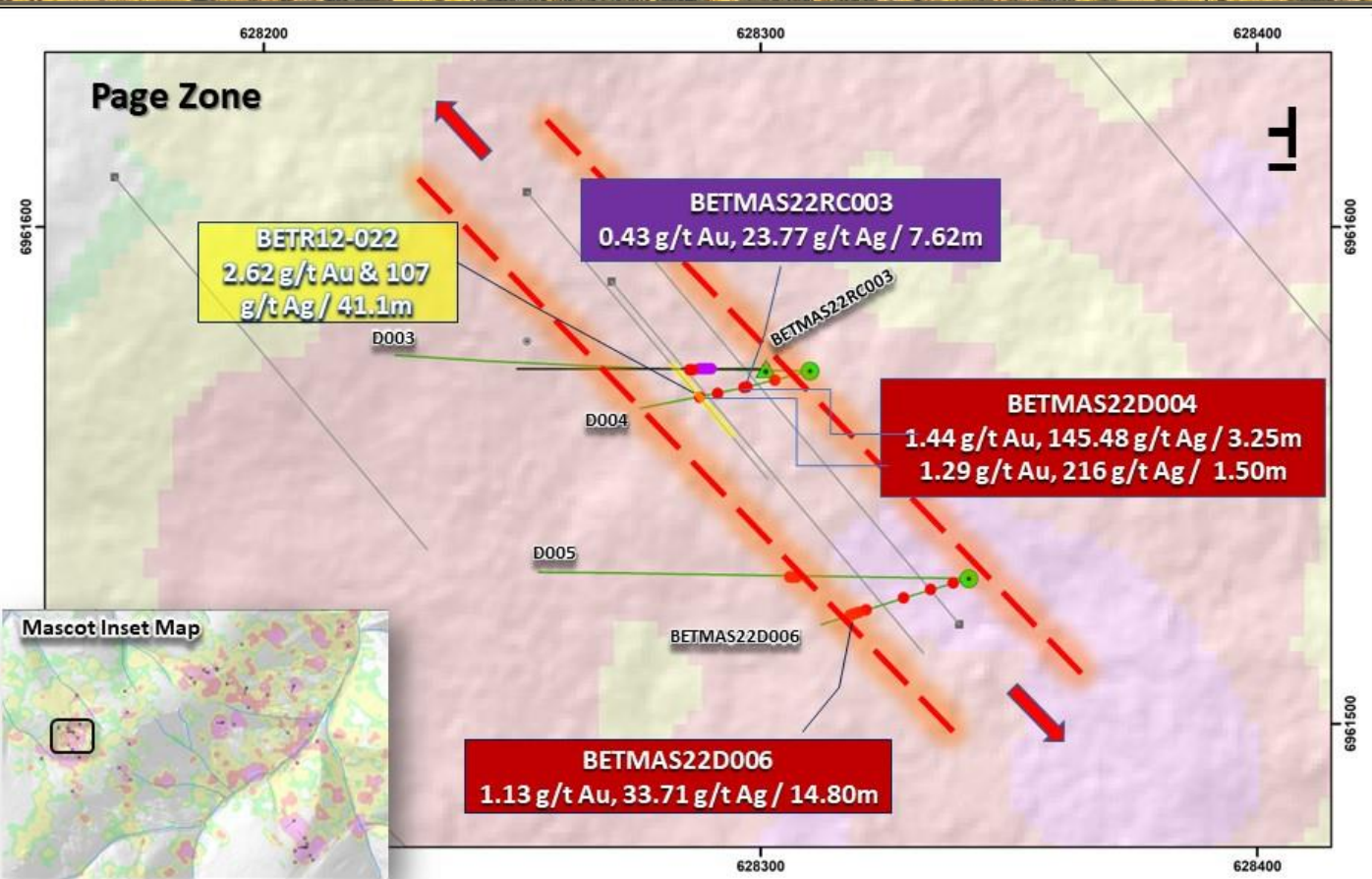
Hole ID	From (m)	To (m)	Length* (m)	Au (g/t)	Ag (g/t)
BETMAS22RC004	7.62	10.67	3.05	1.24	0.41
	15.24	24.38	9.14	1.48	0.39
	64.01	71.63	7.62	4.13	0.62
Incl.	70.10	71.63	1.52	12.90	1.64
BETMAS22RC005	6.10	33.53	27.43	1.14	0.48
Incl.	32.00	33.53	1.53	8.74	0.46
BETMAS22D007	13.75	17.70	3.95	2.85	0.31
	15.55	16.45	0.90	4.42	0.37
	60.00	61.25	1.25	4.17	0.51
	105.90	107.50	1.60	7.42	4.32
Incl.	107.00	107.50	0.50	23.70	13.72
BETMAS22D008	17.25	25.85	8.60	2.02	0.80
	68.50	85.85	17.35	1.25	0.36
Incl.	80.10	80.85	0.75	15.60	2.98
BETMAS22D009	15.95	16.75	0.80	1.75	1.35
	42.95	59.70	16.75	0.59	1.20
	88.85	89.45	0.60	1.31	3.19
BETMAS22D010	16.50	21.00	4.50	1.11	0.72
	49.00	49.50	0.50	8.94	0.92
	78.10	81.05	2.95	1.29	1.35
	113.50	114.30	0.80	4.54	0.11
	142.50	143.00	0.50	3.41	1.33

*All drill hole intercepts reported are core lengths. Currently there is insufficient data to estimate true thicknesses

BETTY MASCOT – DAVIS ZONE CROSS SECTION



BETTY MASCOT – PAGE ZONE 2022 DRILLING



Hole ID	From (m)	To (m)	Length (m)	Au (g/t)	Ag (g/t)	Zn (%)	Pb (%)
BETMAS22RC003	19.81	27.43	7.62	0.43	23.77	0.75	0.21
BETMAS22D003	36.40	38.45	2.05	1.56	60.65	1.13	0.53
BETMAS22D004	48.95	52.20	3.25	1.44	145.48	1.49	0.86
Incl.	50.70	52.20	1.50	2.38	271.00	3.03	1.69
	55.95	57.80	1.85	0.29	67.59	1.35	0.51
	70.70	72.20	1.50	1.29	216.00	1.34	1.53
BETMAS22D005	53.80	56.50	2.70	1.51	97.50	2.10	0.75
Incl.	53.80	54.35	0.55	1.43	101.96	3.64	0.82
And	55.50	56.00	0.50	2.32	257.00	3.11	2.06
BETMAS22D006	86.50	101.30	14.80	1.13	33.71	0.37	0.20
Incl.	86.50	87.20	0.70	8.44	43.31	1.29	0.18

*All drill hole intercepts reported are core lengths. Currently there is insufficient data to estimate true thicknesses

Legend

- 2022 Diamond Drill Hole, Assays Received
- Diamond Drill Gold Intersections >0.5 g/t Au
- ▲ 2022 RC Drill Hole, Assays Received
- RC Gold Intersections >0.5 g/t Au
- Ethos 2012 RC Hole
- Gold Soil Anomalies

Mineralization Trend

Soil Contours (Au ppb)

- 100.0
- 42.0
- 12.0
- 7.0

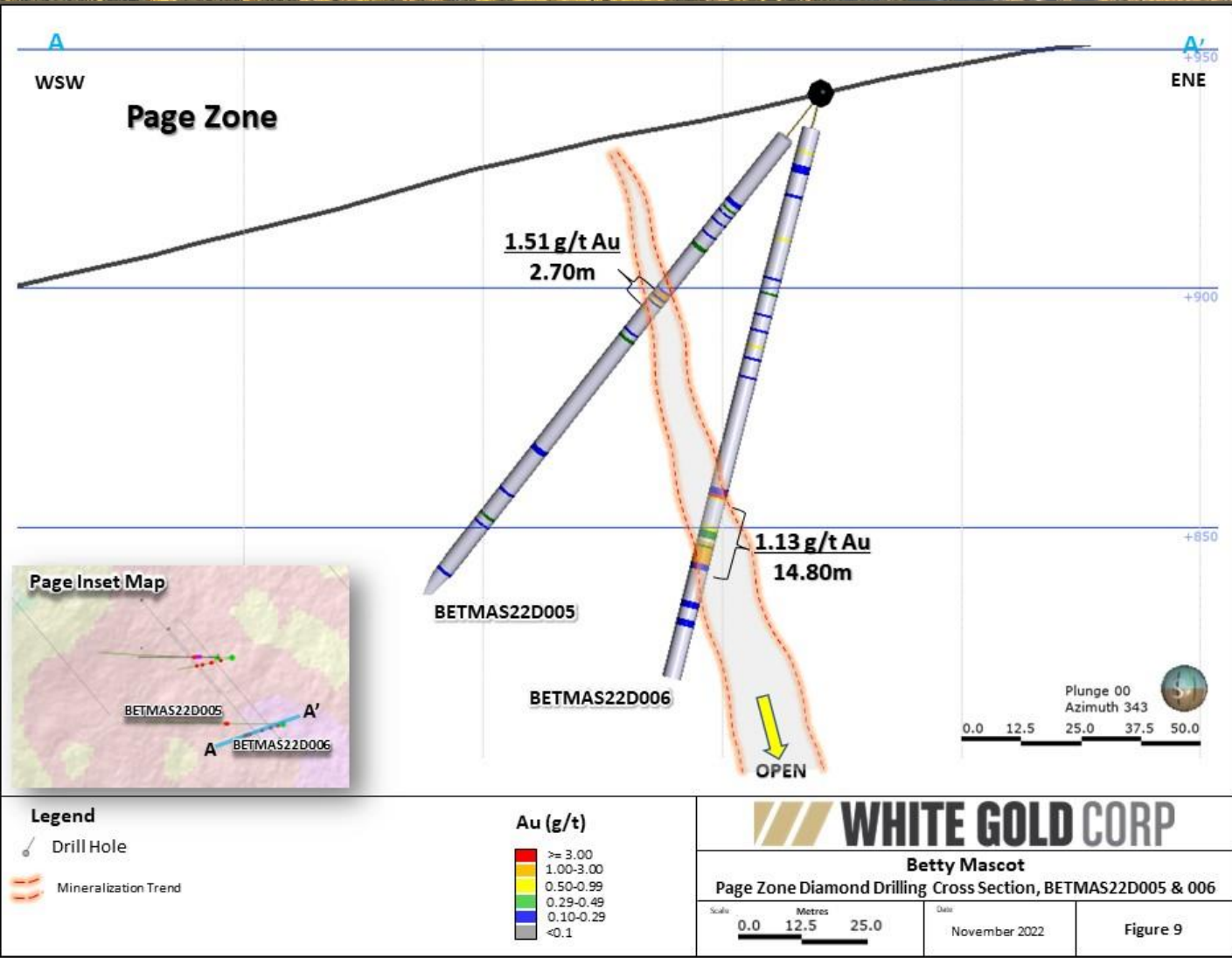
Betty Mascot
2022 Page Zone Highlights

Scale: 0 20 40 Meters

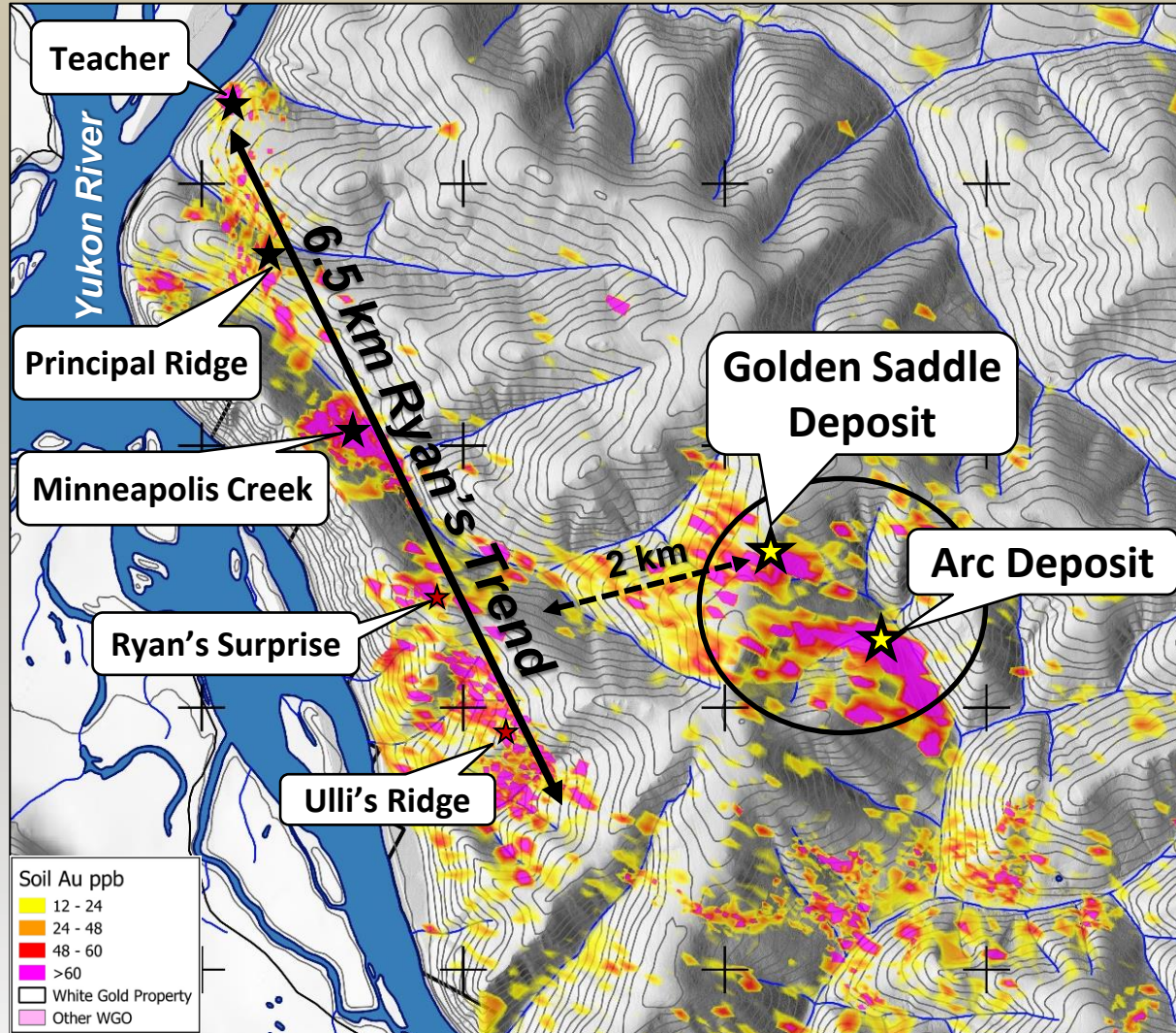
Projection: NAD 83 Zone 7N
Date: November 2022

Figure 8

BETTY MASCOT – PAGE ZONE CROSS SECTION



RYAN'S SURPRISE TARGET

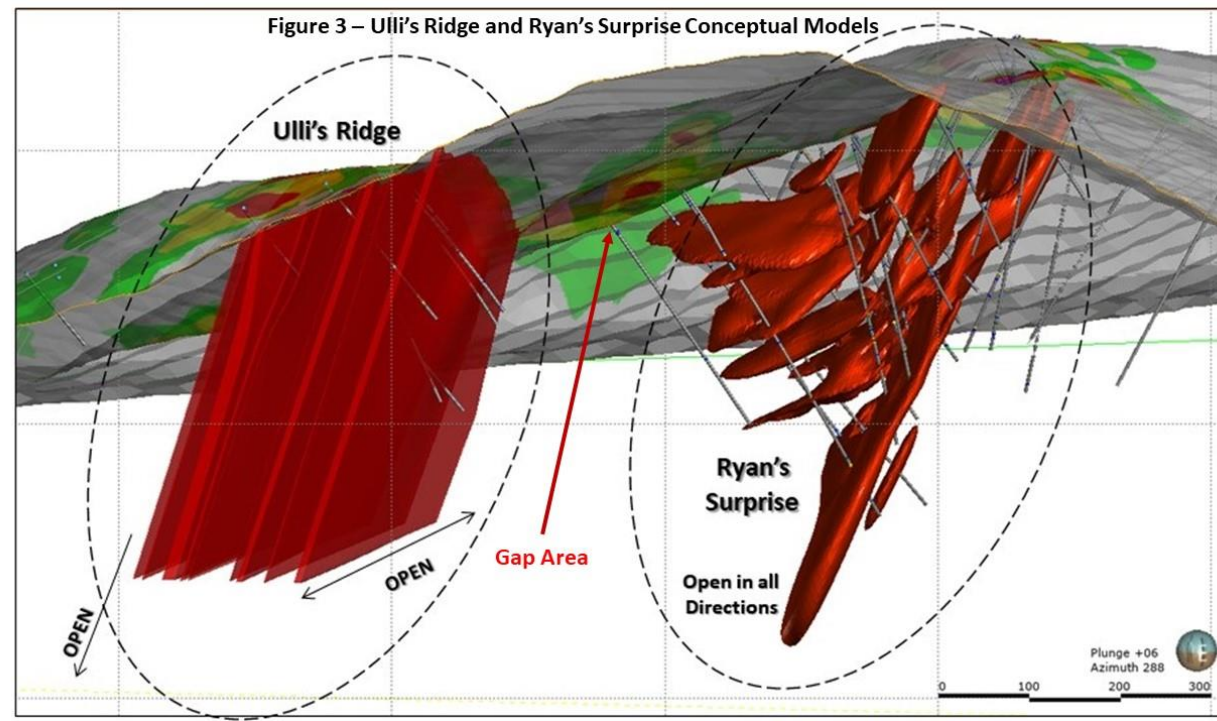
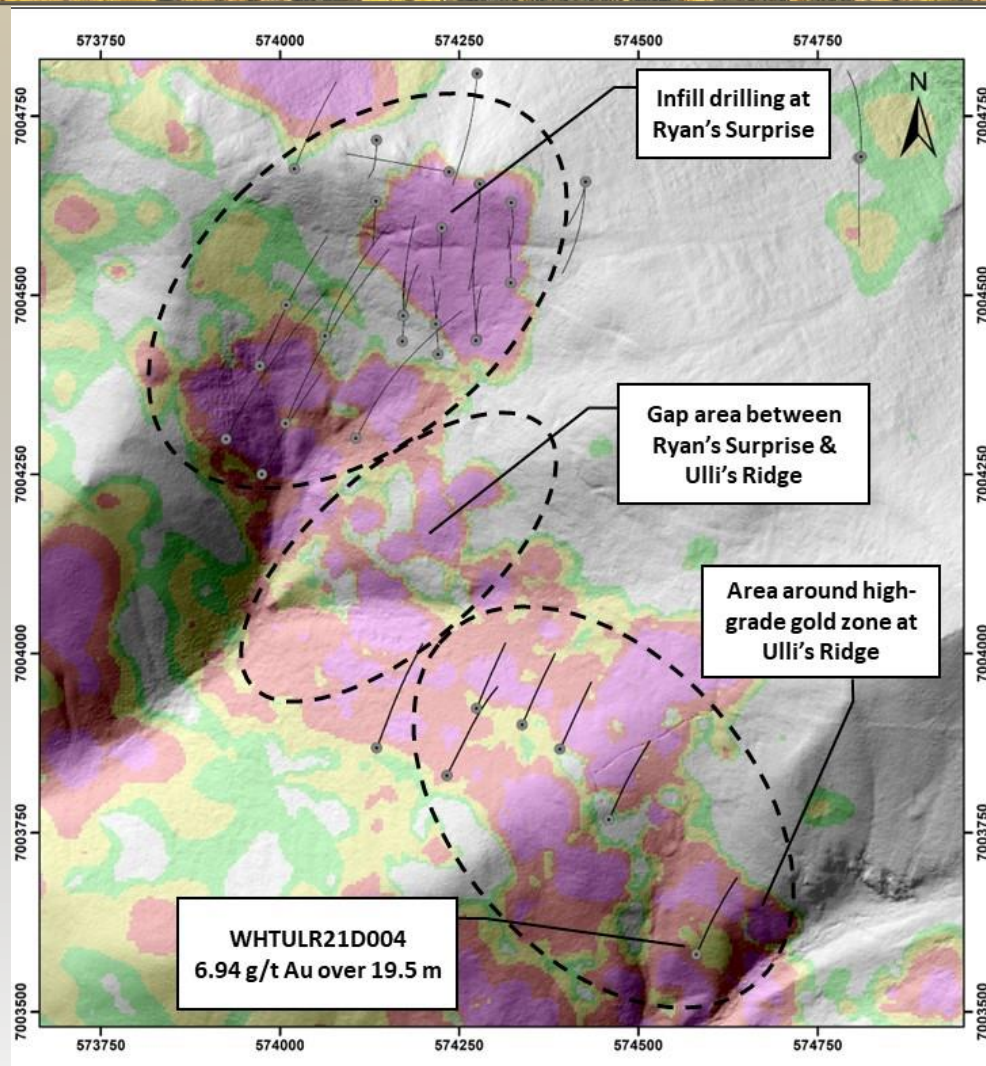


Drilling Highlights – 2018 to 2022

Hole ID	From (m)	To (m)	Length* (m)	Gold (g/t)
WHTRYN18RC0001	83.82	89.92	6.10	20.64
WHTRYN18RC0002	121.92	135.64	13.17	5.02
WHTRS19D012	142.22	174.00	31.78	2.10
WHTRS20D013	53.00	56.47	3.47	17.40
WHTRS20D017	156.00	159.76	3.76	10.96
WHTRS20D018	187.70	200.00	12.30	8.69
WHTRS21D020	224.50	250.00	25.50	1.66
WHTRS21D026	186.75	190.00	3.25	10.36
WHTRS22D029	266.50	277.35	10.85	5.34

*All drill hole intercepts reported are core lengths. Currently there is insufficient data to estimate true thicknesses

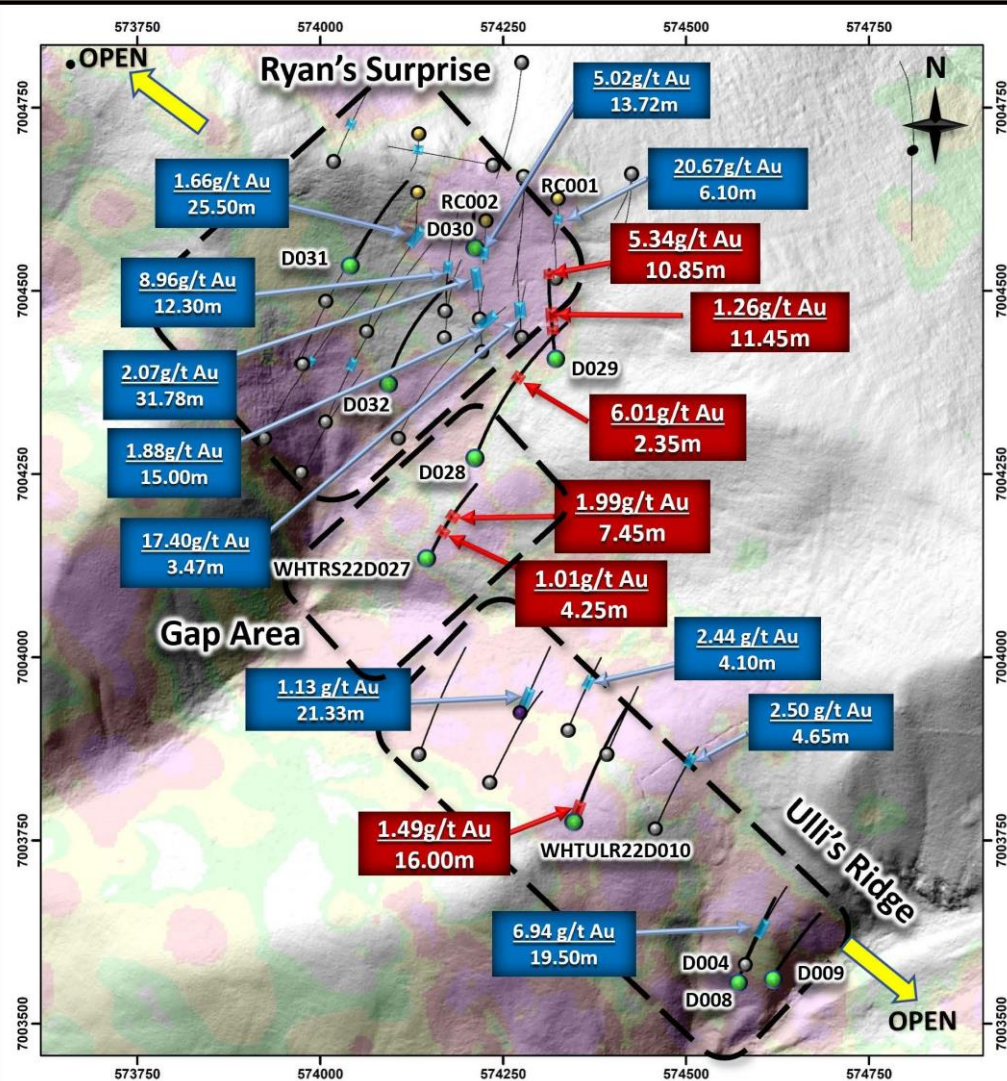
2022 Diamond Drilling – Ryan’s Trend



Approximately 2,700 m of diamond drilling completed to further test 3 target areas:

- 1) Infill drilling at Ryan's Surprise to provide sufficient drill spacing to conduct a potential initial mineral resource estimate.
- 2) Gap area between the Ryan's Surprise and Ulli's Ridge target to determine if they form part of the same mineralized zone
- 3) Area around the newly discovered high-grade gold zone at Ulli's Ridge, with hole WHTULR21D004 returning 6.94 g/t Au over 19.5 m.

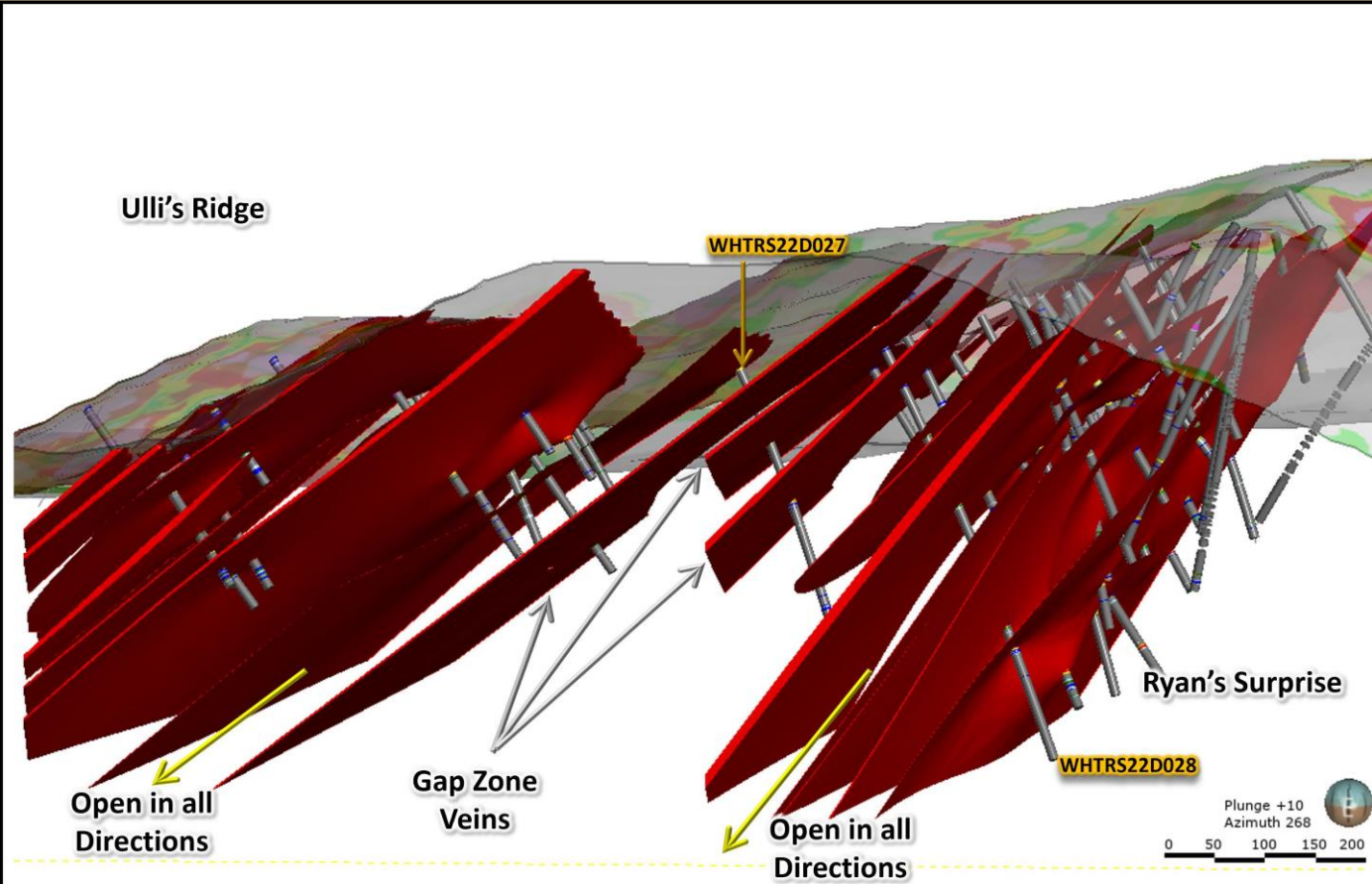
RYAN'S SURPRISE TARGET – 2022 DRILLING



Hole ID	Area	From (m)	To (m)	Length* (m)	Gold (g/t)
WHTRS22D029	Ryan's Infill	75.00	79.50	4.50	2.76
		99.85	111.00	11.15	1.26
		266.50	277.35	10.85	5.34
	<i>incl.</i>	266.50	267.35	0.85	37.70
	<i>and</i>	271.20	272.15	0.95	21.30
WHTRS22D030	Ryan's Infill	157.05	162.00	4.95	1.02
WHTRS22D031	Ryan's Infill	69.50	71.00	1.50	0.97
		238.00	238.85	0.85	1.76
WHTRS22D032	Ryan's Infill	95.30	96.70	1.40	4.47
		151.75	153.25	1.50	1.91
		179.00	196.50	17.50	0.58
		213.90	216.20	2.30	1.78
		219.65	220.20	0.55	8.03
		315.25	329.60	14.35	0.69
WHTRS22D027	Gap Area	145.50	156.95	11.45	1.43
WHTRS22D028	Gap Area	296.50	298.85	2.35	6.01

*All drill hole intercepts reported are core lengths. Currently there is insufficient data to estimate true thicknesses

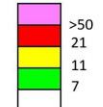
RYAN'S SURPRISE TARGET – 2022 DRILLING



Legend

-  Gold Zone
-  Gold Soil Anomalies

Soil Contours (Au ppb)

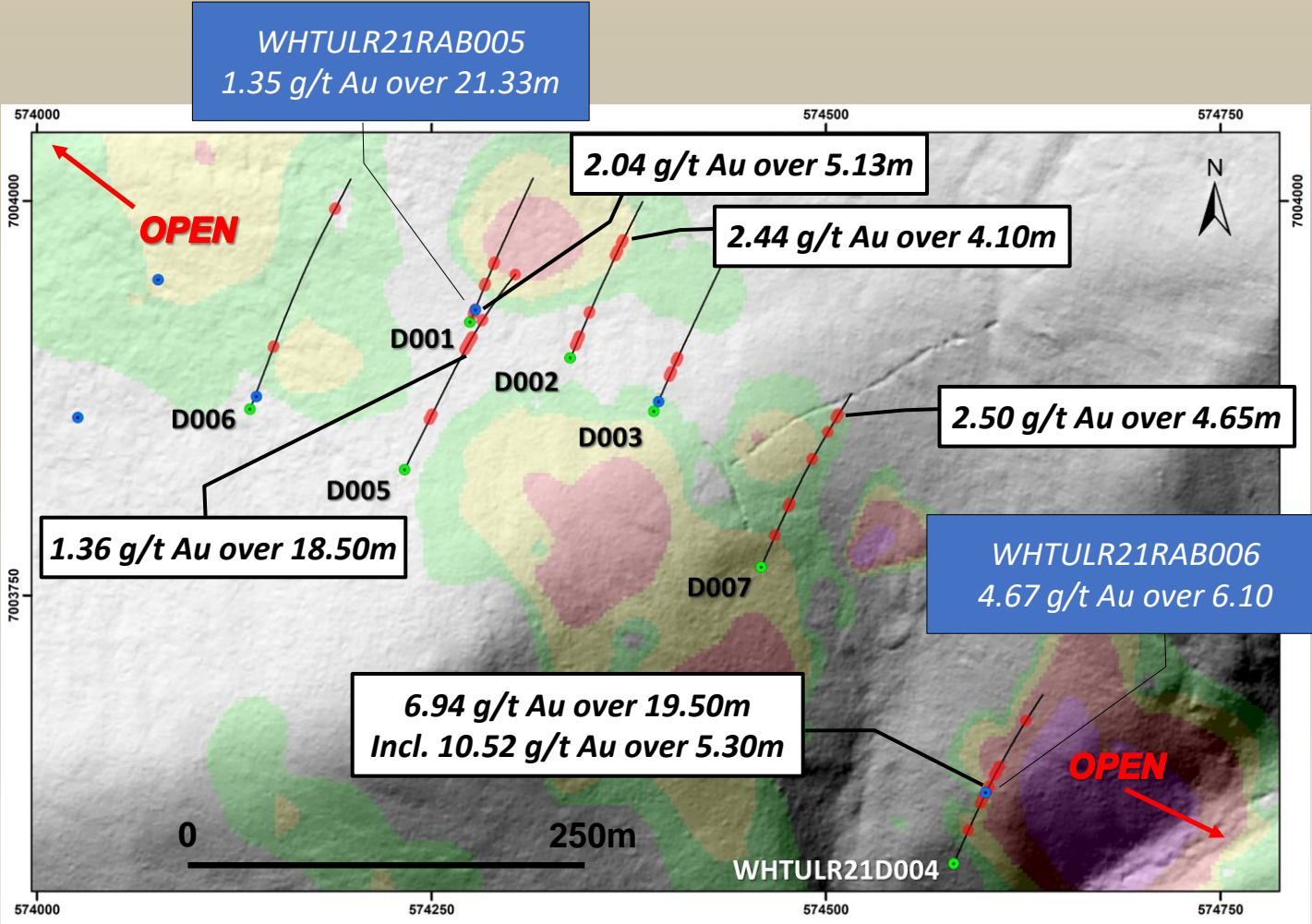


White Gold Property Ulli's Ridge and Ryan's Surprise Conceptual Model

Scale	Metres	Projection
0 50 100 150 200		NAD 83 Zone 7N
		Date
		December 2022

Figure 3

ULLI'S RIDGE TARGET

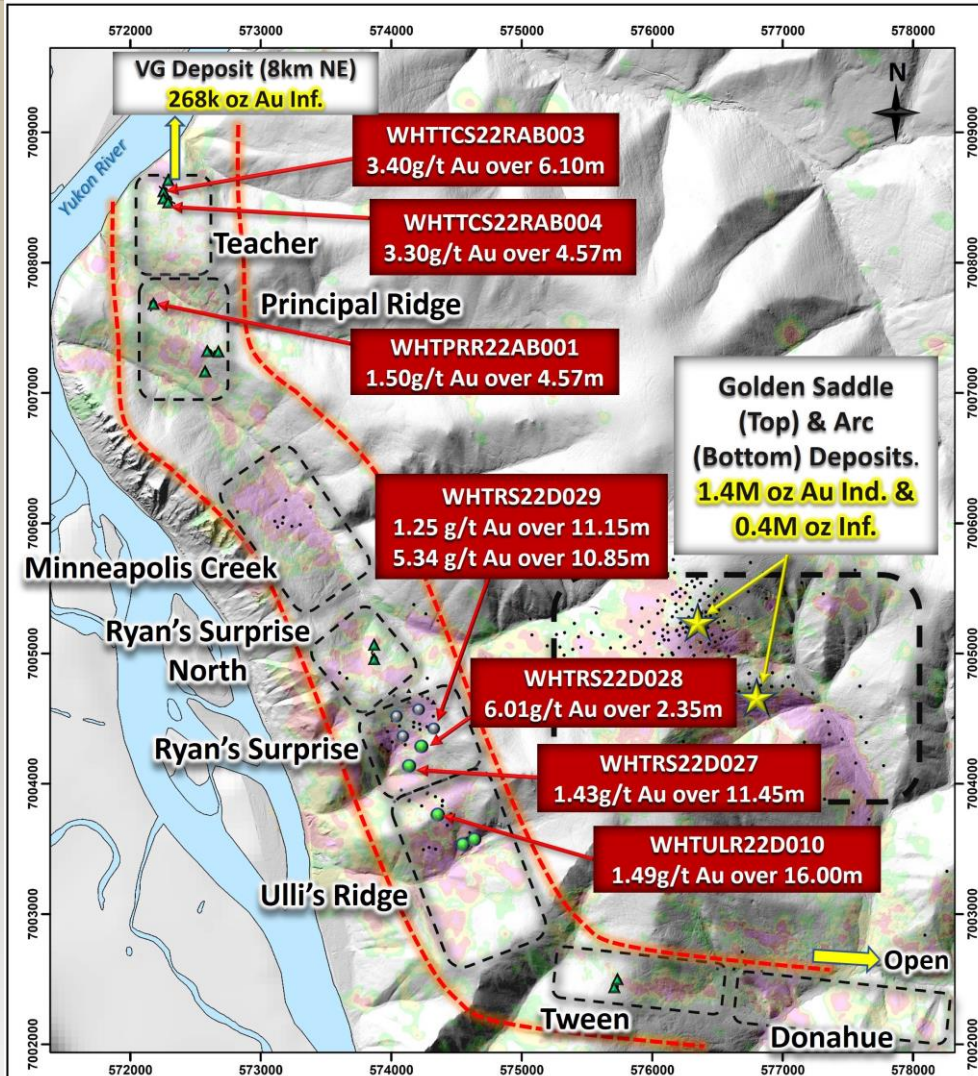


Drilling Highlights (2021 & 2022)

Hole ID	From (m)	To (m)	Length* (m)	Gold (g/t)
WHTULR21D001	9.00	14.13	5.13	2.04
WHTULR21D002	125.50	129.60	4.10	2.44
WHTULR21D003	53.86	58.35	4.49	1.91
WHTULR21D004	35.20	35.90	0.70	10.30
	64.50	84.00	19.50	6.94
<i>Inc.</i>	65.50	67.00	1.50	39.10
<i>Inc.</i>	74.25	79.55	5.30	10.52
<i>Inc.</i>	75.25	76.08	0.83	45.40
WHTULR21D005	139.50	158.00	18.50	1.36
WHTULR21D006	219.60	221.30	1.70	4.26
WHTULR21D007	164.55	169.20	4.65	2.50
WHTULR22D008	136.45	139.55	3.10	0.92
WHTULR22D009	30.20	35.45	5.25	0.58
	106.88	108.75	1.87	1.77
	149.75	152.00	2.25	1.43
WHTULR22D010	6.00	22.00	16.00	1.49
	54.00	56.00	2.00	0.97

*All drill hole intercepts reported are core lengths. Currently there is insufficient data to estimate true thicknesses

RYAN'S TREND 2022 RAB DRILLING



Hole ID	From (m)	To (m)	Length* (m)	Gold (g/t)
TEACHER				
WHTTCS22RAB002	3.05	19.81	16.76	0.31
<i>Inc.</i>	16.76	18.29	1.52	1.00
WHTTCS22RAB003	1.52	7.62	6.10	3.40
<i>Inc.</i>	1.52	6.10	4.57	4.40
<i>Inc.</i>	3.05	4.57	1.52	6.89
WHTTCS22RAB004	24.38	28.96	4.57	3.30
<i>Inc.</i>	24.38	25.91	1.52	9.64
PRINCIPAL RIDGE				
WHTPRR22RAB001	25.91	30.48	4.57	1.50
<i>Inc.</i>	25.91	27.43	1.52	3.74
	50.29	68.58	18.29	0.26
	74.68	77.72	3.05	0.65
WHTPRR22RAB003	1.52	6.10	4.57	1.20
<i>Inc.</i>	3.05	6.10	3.05	1.72

NOLAN PROPERTY – MT. HART

